

FSA INFO PACKET



A DIVISION OF WHITETAIL
PROPERTIES REAL ESTATE, LLC

RANCHANDFARMAUCTIONS.COM

Abbreviated 156 Farm Record

--

Tract Number : 9788

Description : sec 23 Lincoln
FSA Physical Location : IOWA/BLACK HAWK
ANSI Physical Location : IOWA/BLACK HAWK
BIA Unit Range Number :
HEL Status : NHEL: No agricultural commodity planted on undetermined fields
Wetland Status : Wetland determinations not complete
WL Violations : None
Owners : THOMAS R KERR TRUST
Other Producers :
Recon ID : 19-013-2009-139

Tract Land Data

Farm Land	Cropland	DCP Cropland	WBP	EWP	WRP	GRP	Sugarcane
159.48	152.01	152.01	0.00	0.00	0.00	0.00	0.0
State Conservation	Other Conservation	Effective DCP Cropland	Double Cropped	CRP	MPL	DCP Ag. Rel Activity	SOD
0.00	0.00	152.01	0.00	0.00	0.00	0.00	0.00

DCP Crop Data

Crop Name	Base Acres	CCC-505 CRP Reduction Acres	PLC Yield
Corn	103.20	0.00	176
Soybeans	42.20	0.00	52
TOTAL	145.40	0.00	

NOTES

--

IOWA
BLACK HAWK
Form: FSA-156EZ



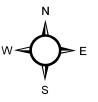
FARM : 333
Prepared : 11/17/25 8:47 AM CST
Crop Year : 2026

Abbreviated 156 Farm Record

In accordance with Federal civil rights law and U.S. Department of Agriculture (USDA) civil rights regulations and policies, the USDA, its Agencies, offices, and employees, and institutions participating in or administering USDA programs are prohibited from discriminating based on race, color, national origin, religion, sex, disability, age, marital status, family/parental status, income derived from a public assistance program, political beliefs, or reprisal or retaliation for prior civil rights activity, in any program or activity conducted or funded by USDA (not all bases apply to all programs). Remedies and complaint filing deadlines vary by program or incident.

Persons with disabilities who require alternative means of communication for program information (e.g., Braille, large print, audiotape, American Sign Language, etc.) should contact the responsible Agency or USDA's TARGET Center at (202) 720-2600 (voice and TTY) or contact USDA through the Federal Relay Service at (800) 877-8339. Additionally, program information may be made available in languages other than English.

To file a program discrimination complaint, complete the USDA Program Discrimination Complaint Form, AD-3027, found online at [How to File a Program Discrimination Complaint](#) and at any USDA office or write a letter addressed to USDA and provide in the letter all of the information requested in the form. To request a copy of the complaint form, call (866) 632-9992. Submit your completed form or letter to USDA by: (1) Mail: U.S. Department of Agriculture Office of the Assistant Secretary for Civil Rights, 1400 Independence Avenue, SW Washington, D.C. 20250-9410; (2) Fax: (202) 690-7442; or (3) Email: program.intake@usda.gov. USDA is an equal opportunity provider, employer, and lender.



Legend

- Non-Cropland
- Cropland
- CRP
- Iowa PLSS
- Tract Boundary
- Iowa Roads

Wetland Determination Identifiers

- Restricted Use
- ▼ Limited Restrictions
- Exempt from Conservation
- Compliance Provisions

Tract Cropland Total: 152.01 acres

2025 Program Year

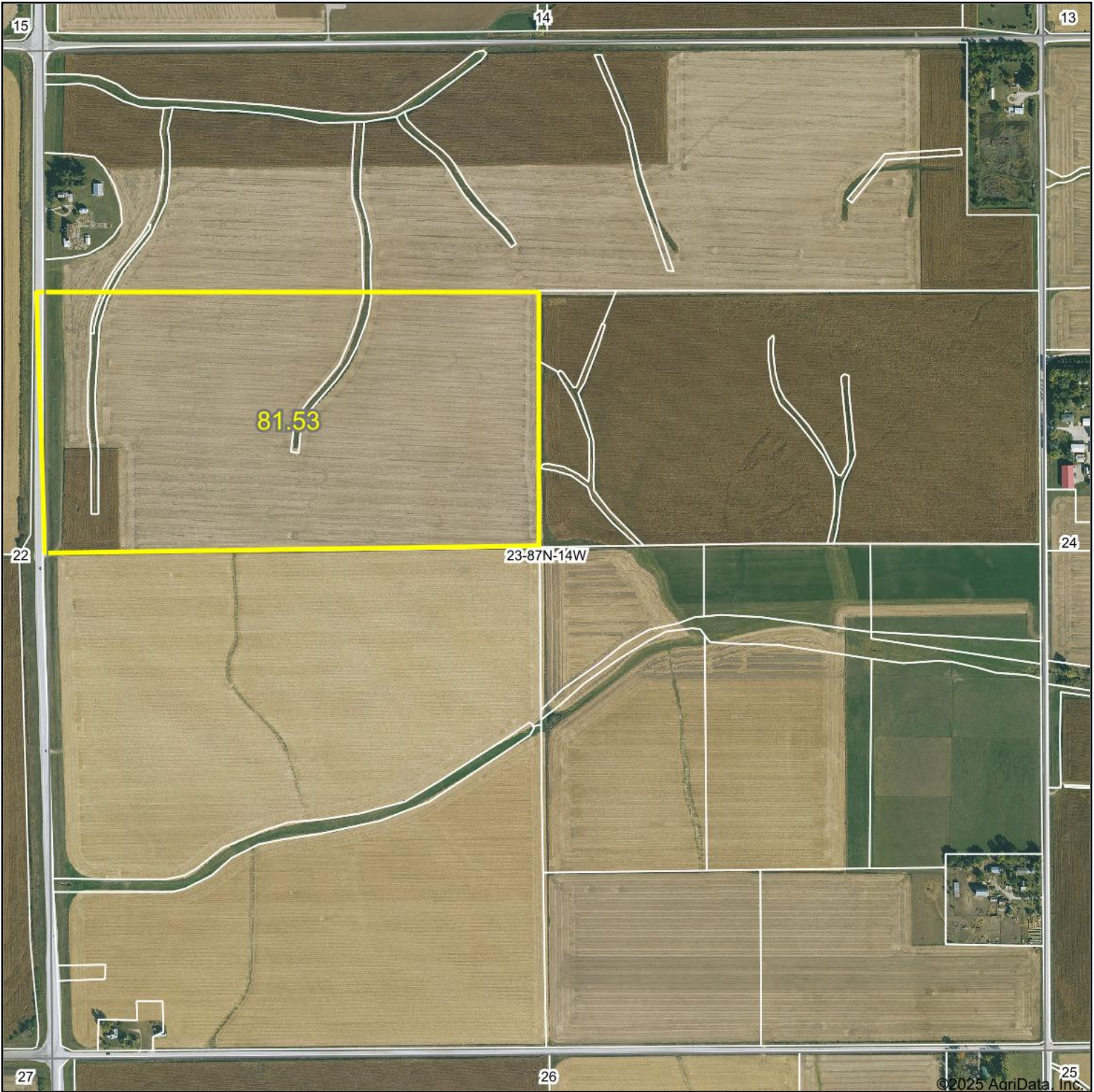
Map Created April 24, 2025

Farm 333
Tract 9788

United States Department of Agriculture (USDA) Farm Service Agency (FSA) maps are for FSA Program administration only. This map does not represent a legal survey or reflect actual ownership; rather it depicts the information provided directly from the producer and/or National Agricultural Imagery Program (NAIP) imagery. The producer accepts the data 'as is' and assumes all risks associated with its use. USDA-FSA assumes no responsibility for actual or consequential damage incurred as a result of any user's reliance on this data outside FSA Programs. Wetland identifiers do not represent the size, shape, or specific determination of the area. Refer to your original determination (CPA-026 and attached maps) for exact boundaries and determinations or contact USDA Natural Resources Conservation Service (NRCS).

USDA is an equal opportunity provider, employer, and lender.

Aerial Map



Boundary Center: 42° 20.1213', -92° 27.0711'



WHITETAIL PROPERTIES REAL ESTATE
HUNTING | RANCH | FARM | TIMBER

Maps Provided By:



© AgriData, Inc. 2023 www.AgriDataInc.com

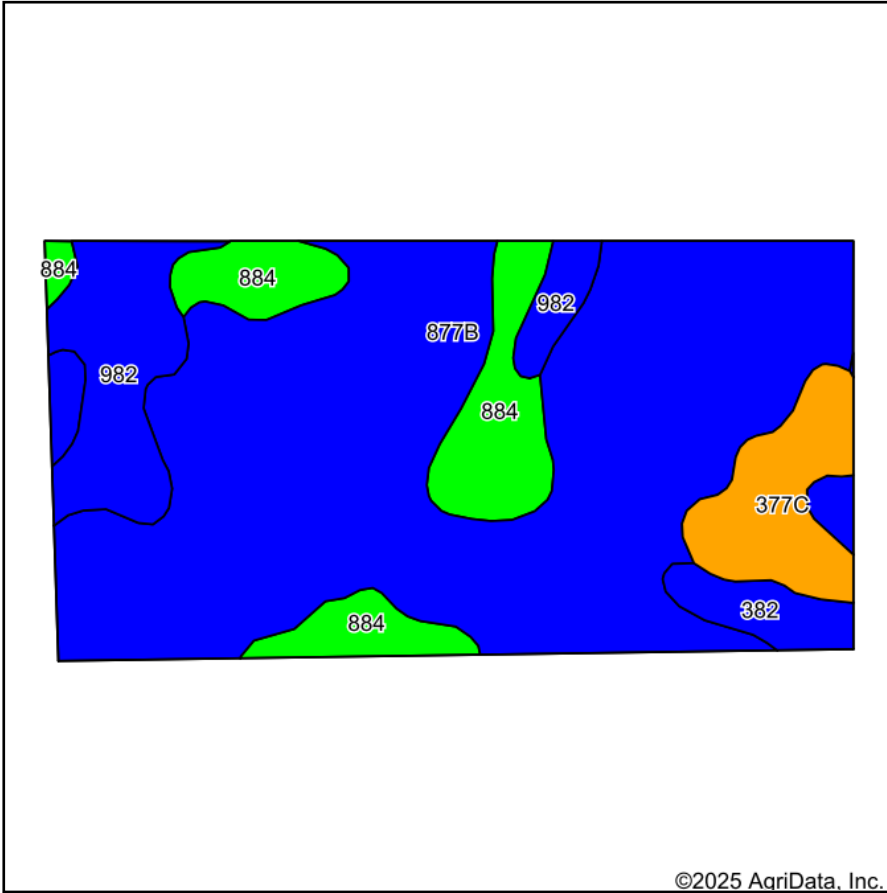
23-87N-14W
Black Hawk County
Iowa



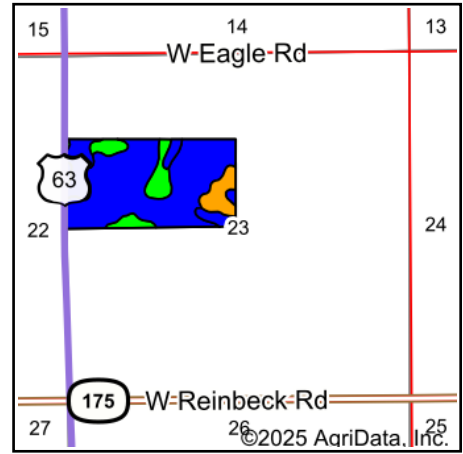
10/6/2025

Field borders provided by Farm Service Agency as of 5/21/2008.

Soils Map



Soils data provided by USDA and NRCS.



State: **Iowa**
 County: **Black Hawk**
 Location: **23-87N-14W**
 Township: **Lincoln**
 Acres: **81.53**
 Date: **10/6/2025**



WHITETAIL PROPERTIES REAL ESTATE
 HUNTING | RANCH | FARM | TIMBER

Maps Provided By:



Area Symbol: IA013, Soil Area Version: 32

Code	Soil Description	Acres	Percent of field	Non-Irr Class Legend	Non-Irr Class *c	*i Corn Bu	*i Soybeans Bu	CSR2**	
877B	Dinsmore silty clay loam, 2 to 5 percent slopes	54.18	66.4%		Ile	232.0	67.3	95	
884	Klingmore silty clay loam, 1 to 3 percent slopes	10.10	12.4%		I	240.0	69.6	95	
982	Maxmore silty clay loam, 0 to 2 percent slopes	8.50	10.4%		IIw	230.4	66.8	94	
377C	Dinsdale silty clay loam, 5 to 9 percent slopes	5.75	7.1%		IIIe	216.0	62.6	90	
382	Maxfield silty clay loam, 0 to 2 percent slopes	3.00	3.7%		IIw	230.4	66.8	87	
Weighted Average						1.95	231.6	67.2	94.2

**IA has updated the CSR values for each county to CSR2.

*i Yield data provided by the ISPAID Database version 8.1.1 developed by IA State University.

*c: Using Capabilities Class Dominant Condition Aggregation Method