

LAND AUCTION



80 AC± | 1 TRACT | TURNER CO, SD

LIVE AND ONLINE AT RANCHANDFARMAUCTIONS.COM

AUCTION DATE: 2/13/26 **AUCTION TIME:** 9 AM CT

AUCTION HELD AT: TWISTED PINES VENUE
1050 EAST 4TH ST, PARKER, SD 57053

Great Combination of Income & Recreation - Prime Southeast South Dakota Acres

This versatile tract of land combines strong income potential with a mix of recreational opportunities. Located approximately 6 miles from Parker, SD, 5 miles from Hurley, SD, and just a 35-minute drive from Sioux Falls, this property is well-positioned for both local operators and investors.

The land features productive Dimo and Clamo clay soils and is easily accessible via oil road access, making it a practical addition to an agricultural operation or a solid long-term investment. With an ethanol plant approximately 12 miles away, the location further supports continued demand for quality farmland in the area.

Adding to its appeal are approximately 10 acres of established trees, providing wildlife habitat for a little upland game, deer or turkey hunting opportunities.

Whether you're looking to diversify your financial portfolio, expand your farming operation, or own a property that blends income with outdoor recreation, this tract checks all the boxes.

Auction opportunity - don't miss your chance to invest in a well-located, multi-use property.



Deeded Acres:	80
FSA Farmland Acres:	66.02
Soil Types:	Dimo clay loam, Clamo clay, gravelly substratum
Soil PI/NCCPI/CSR2:	67.1 CPI 38.04 NCCPI
CRP Acres/Payment:	None
Taxes:	\$1,545.52
Lease Status:	Open Tenancy for 2027 crop year
Possession:	Immediate possession subject to the current tenant's rights for 2026
Survey Needed?:	No survey needed
Brief Legal:	S ½ NW ¼ S09 T98N R53W Turner Co SD
PIDs:	08000-09853-092-10
Lat/Lon:	43.32415, -97.11715
Zip Code:	57036

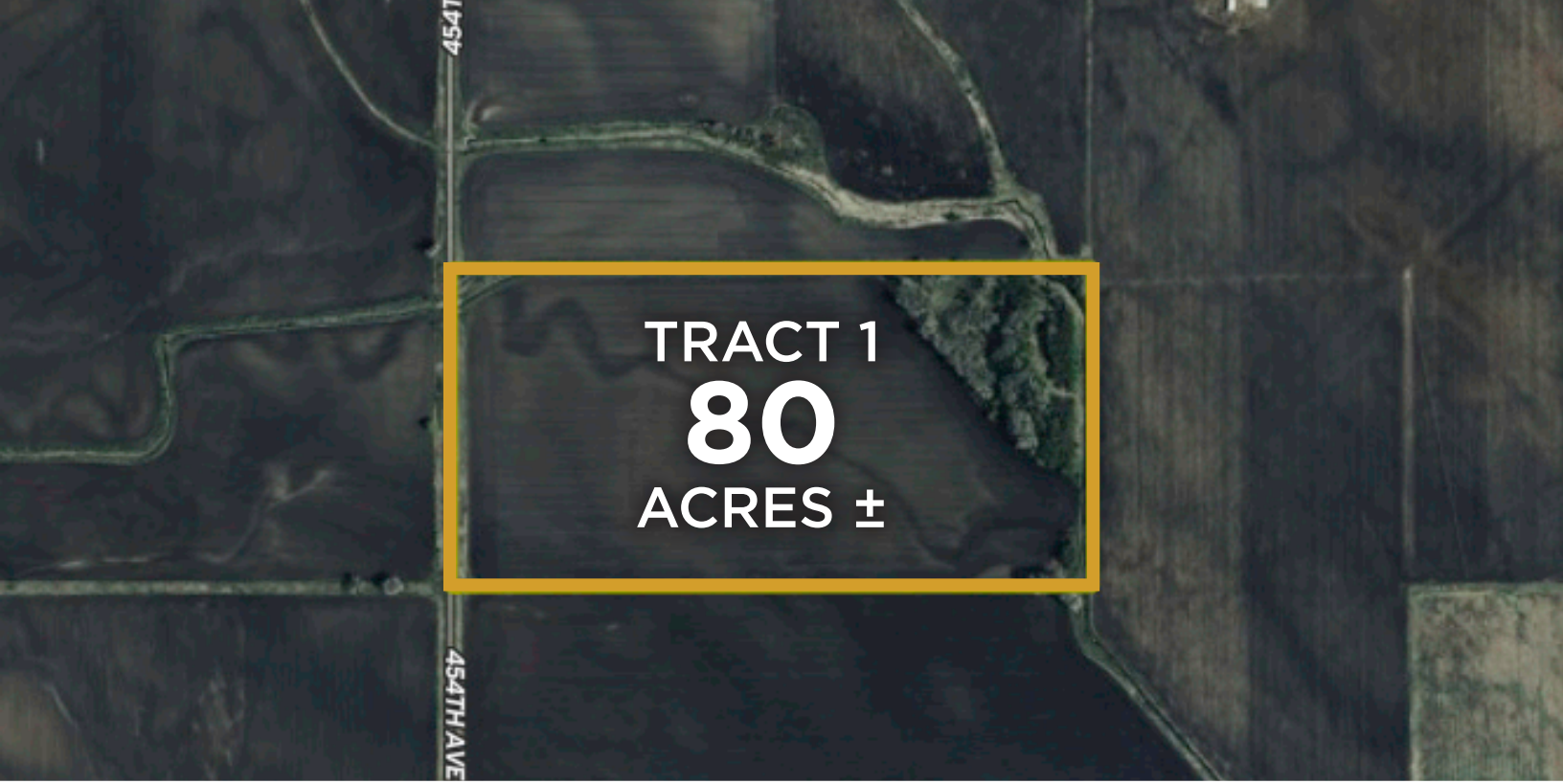


IN COOPERATION WITH WHITETAIL PROPERTIES REAL ESTATE, LLC
JASON SCHENDT, AGENT: 402.707.4885 | jason.schendt@whitetailproperties.com

RANCHANDFARMAUCTIONS.COM

GO TO RANCHANDFARMAUCTIONS.COM FOR ADDITIONAL INFORMATION, PHOTOS, SOIL MAPS AND TERMS.

Ranch & Farm Auctions, LLC LIC15136 | Broker Jason R. Schendt SD LIC #16828 | Cody Lowderman Auc Lic RE17883 | Jason Schendt, Whitetail Properties Agent/Land Specialist, 402.707.4885



**TRACT 1
80
ACRES ±**

80 AC± | 1 TRACT | TURNER CO, SD

LIVE AND ONLINE AT RANCHANDFARMAUCTIONS.COM

AUCTION DATE: 2/13/26 AUCTION TIME: 9 AM CT

**AUCTION HELD AT: TWISTED PINES VENUE
1050 EAST 4TH ST, PARKER, SD 57053**



IN COOPERATION WITH WHITETAIL PROPERTIES REAL ESTATE, LLC
JASON SCHENDT, AGENT: 402.707.4885 | jason.schendt@whitetailproperties.com

RANCHANDFARMAUCTIONS.COM

GO TO RANCHANDFARMAUCTIONS.COM FOR ADDITIONAL INFORMATION, PHOTOS, SOIL MAPS AND TERMS.

Ranch & Farm Auctions, LLC LIC15136 | Broker Jason R. Schendt SD LIC #16828 | Cody Lowderman Auc Lic RE17883 | Jason Schendt, Whitetail Properties Agent/Land Specialist, 402.707.4885