

LAND AUCTION



116.5 AC± | 1 TRACT | GENESEE CO, MI

LIVE AND ONLINE AT RANCHANDFARMAUCTIONS.COM

AUCTION DATE: 6/30/26 **AUCTION TIME:** 2 PM ET

AUCTION HELD AT: HAMMERBERG MEMORIAL POST 3720
3131 ELMS RD, SWARTZ CREEK, MI 48473



TRACT 1 DESCRIPTION-116.5± ACRES

Here's your chance to own some prime, tillable farmland that has endless opportunities! Whether you're looking to add to your farmland investment portfolio or looking for a clear, open piece of farm land to develop, this farm can definitely suit your needs. Located minutes from I-69, just East of Lennon, Michigan, this prime 116.5± acres of farmland consists of Conover and Brookston Loam soils that boast an NCCPI score of 51.51 and raise some of the area's best crops.

The land is tiled and drains excellently, ensuring a timely planting and harvest. If farming isn't the reason you're looking for land, this property checks all the boxes for building your dream home or any other type of development you may be interested in. Located on Lennon Rd, just minutes East of Lennon, this farm offers beautiful views and outstanding country living, less than an hour from places like Lansing, Flint, and Canada via I-69!

Farms like this don't come on the market very often. This farm has been in the family for over 100 years! This is truly a once-in-a-lifetime opportunity. Contact us for more information. You're not going to want to miss this auction!

Deeded acres:	116.5±
Soil Types:	Conover and Brookston Loams
Soil PI/NCCPI/CSR2:	51.51
CRP Acres/payment:	NO CRP
Taxes:	\$5244.00
Lease Status:	Open Tenancy for 2027 crop year
Possession:	Immediate possession subject to the current tenant's rights for 2026
Survey needed?:	No survey needed
Brief Legal:	116.5± acres SE ¼ NW ¼ and E ½ SW ¼ S20 T7N R5E Genesee Co, MI
PIDs:	PID 04-20-300-016
Lat/Lon:	42.9918 -83.9027
Zip Code:	48449



IN COOPERATION WITH WHITETAIL PROPERTIES REAL ESTATE, LLC

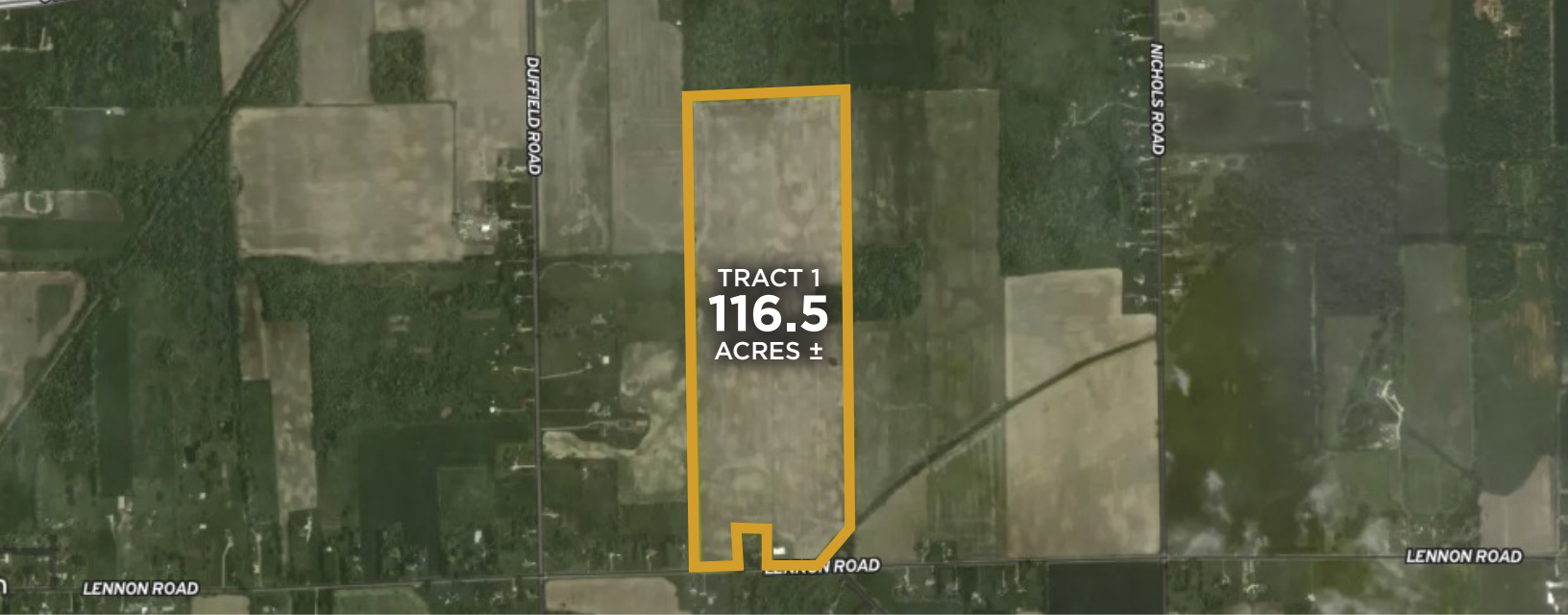
CHRIS GARZA, AGENT: 810.705.2215 | chris.garza@whitetailproperties.com

WILLIAM BUCKINGHAM, AGENT: 517.980.4330 | william.buckingham@whitetailproperties.com

RANCHANDFARMAUCTIONS.COM

GO TO RANCHANDFARMAUCTIONS.COM FOR ADDITIONAL INFORMATION, PHOTOS, SOIL MAPS AND TERMS.

IN COOPERATION WITH WHITETAIL PROPERTIES REAL ESTATE LLC (6505388676) | Ronald Strong, Michigan Broker, License # 6505388676 | Joe Gizdic, Director, Ranch & Farm Auctions, 217.299.0332 | Chris Garza, Michigan Land Specialist for Whitetail Properties Real Estate, LLC, 810.705.2215 | William Buckingham, Michigan Land Specialist for Whitetail Properties Real Estate, LLC, 517.980.4330



116.5 AC± | 1 TRACT | GENESEE CO, MI

LIVE AND ONLINE AT RANCHANDFARMAUCTIONS.COM

AUCTION DATE: 6/30/26 AUCTION TIME: 2 PM ET

**AUCTION HELD AT: HAMMERBERG MEMORIAL POST 3720
3131 ELMS RD, SWARTZ CREEK, MI 48473**



IN COOPERATION WITH WHITETAIL PROPERTIES REAL ESTATE, LLC

CHRIS GARZA, AGENT: 810.705.2215 | chris.garza@whitetailproperties.com

WILLIAM BUCKINGHAM, AGENT: 517.980.4330 | william.buckingham@whitetailproperties.com

RANCHANDFARMAUCTIONS.COM

GO TO RANCHANDFARMAUCTIONS.COM FOR ADDITIONAL INFORMATION, PHOTOS, SOIL MAPS AND TERMS.

IN COOPERATION WITH WHITETAIL PROPERTIES REAL ESTATE LLC (6505388676) | Ronald Strong, Michigan Broker, License # 6505388676 | Joe Gizdic, Director, Ranch & Farm Auctions, 217.299.0332 | Chris Garza, Michigan Land Specialist for Whitetail Properties Real Estate, LLC, 810.705.2215 | William Buckingham, Michigan Land Specialist for Whitetail Properties Real Estate, LLC, 517.980.4330