

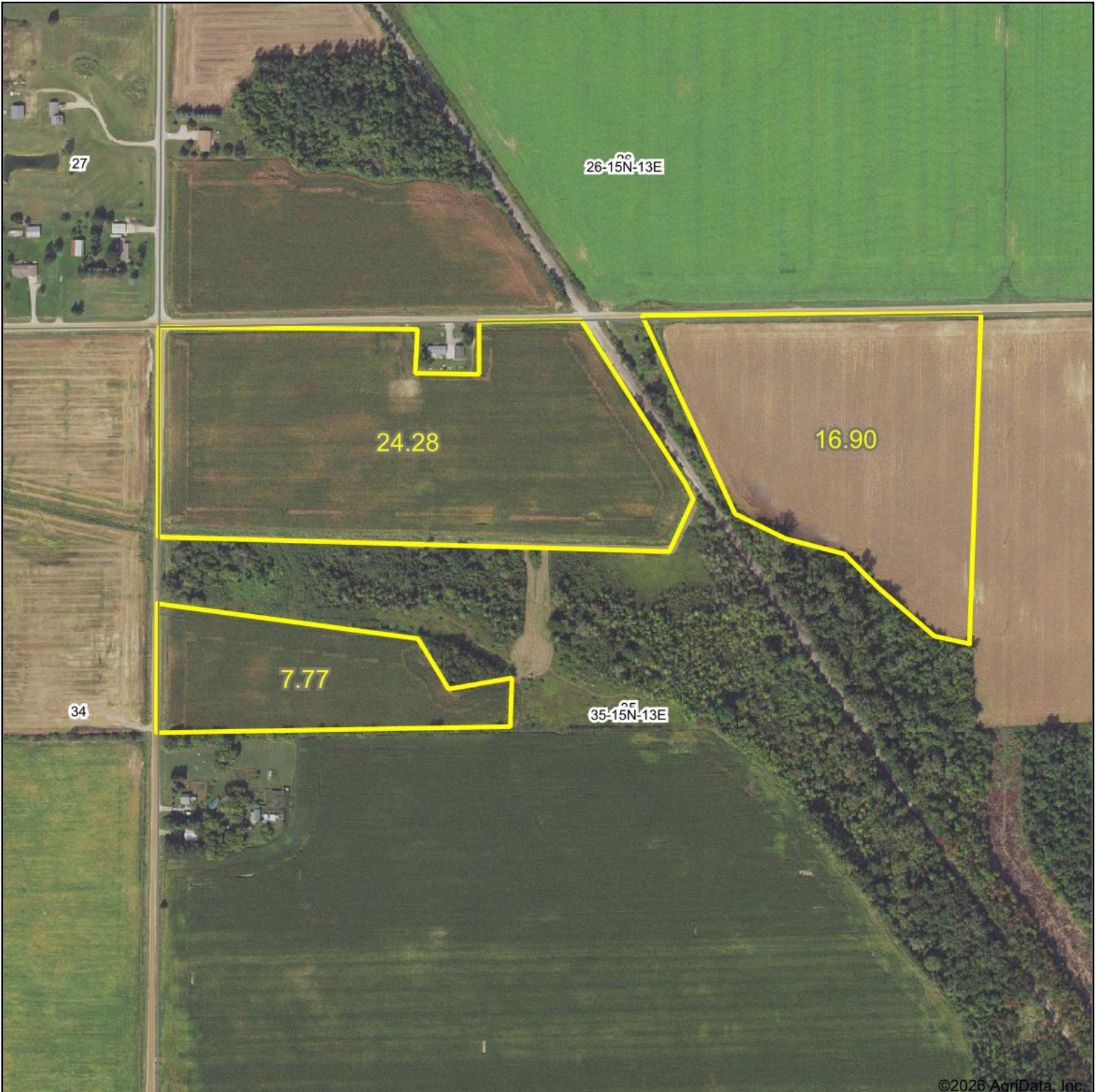
FSA INFO PACKET



A DIVISION OF WHITETAIL
PROPERTIES REAL ESTATE, LLC

RANCHANDFARMAUCTIONS.COM

Aerial Map



©2026 AgriData, Inc.

Boundary Center: 43° 41.6625', -82° 54.8108'



WHITETAIL PROPERTIES REAL ESTATE
HUNTING | RANCH | FARM | TIMBER

Maps Provided By:



© AgriData, Inc. 2025 www.AgriDataInc.com

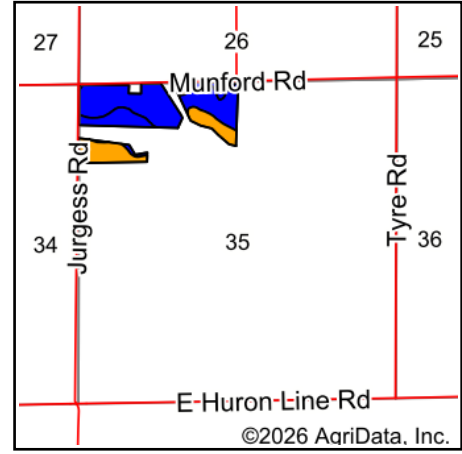
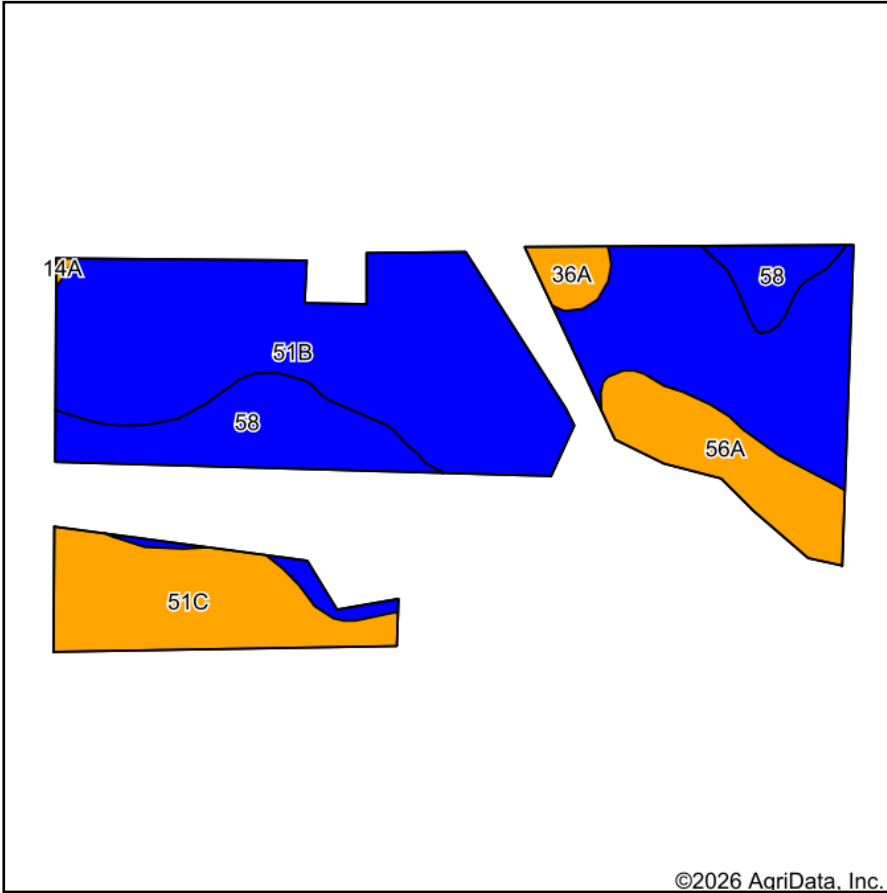
35-15N-13E
Huron County
Michigan



5/18/2026

Field borders provided by Farm Service Agency as of 5/21/2008.

Soils Map



State: **Michigan**
 County: **Huron**
 Location: **35-15N-13E**
 Township: **Bingham**
 Acres: **48.95**
 Date: **5/18/2026**



WHITETAIL PROPERTIES REAL ESTATE
 HUNTING | RANCH | FARM | TIMBER

Maps Provided By:



© AgriData, Inc. 2025

www.AgriDataInc.com



Soils data provided by USDA and NRCS.

Area Symbol: MI063, Soil Area Version: 24

Code	Soil Description	Acres	Percent of field	Non-Irr Class Legend	Water Table	Non-Irr Class *c	*n NCCPI Overall	*n NCCPI Corn	*n NCCPI Small Grains	*n NCCPI Soybeans
51B	Guelph-Londo loams, 2 to 6 percent slopes	28.67	58.6%		2ft.	Ile	79	69	68	79
58	Parkhill loam, 0 to 1 percent slopes	7.60	15.5%		0ft.	IIlw	61	60	51	60
51C	Guelph loam, 6 to 12 percent slopes	7.09	14.5%		> 6.5ft.	IIle	74	66	64	74
56A	Riverdale-Pipestone complex, 0 to 2 percent slopes	4.50	9.2%		0.5ft.	IIIw	46	44	40	31
36A	Pipestone sand, Erie-Huron Lake Plain, 0 to 3 percent slopes	1.02	2.1%		0.7ft.	IIIw	55	55	40	32
14A	Badaxe fine sandy loam, 0 to 3 percent slopes	0.07	0.1%		0.5ft.	IIIw	51	51	48	45
Weighted Average						2.26	*n 71.9	*n 64.6	*n 61.6	*n 69.9

*n: The aggregation method is "Weighted Average using all components"

*c: Using Capabilities Class Dominant Condition Aggregation Method

Soils data provided by USDA and NRCS.