

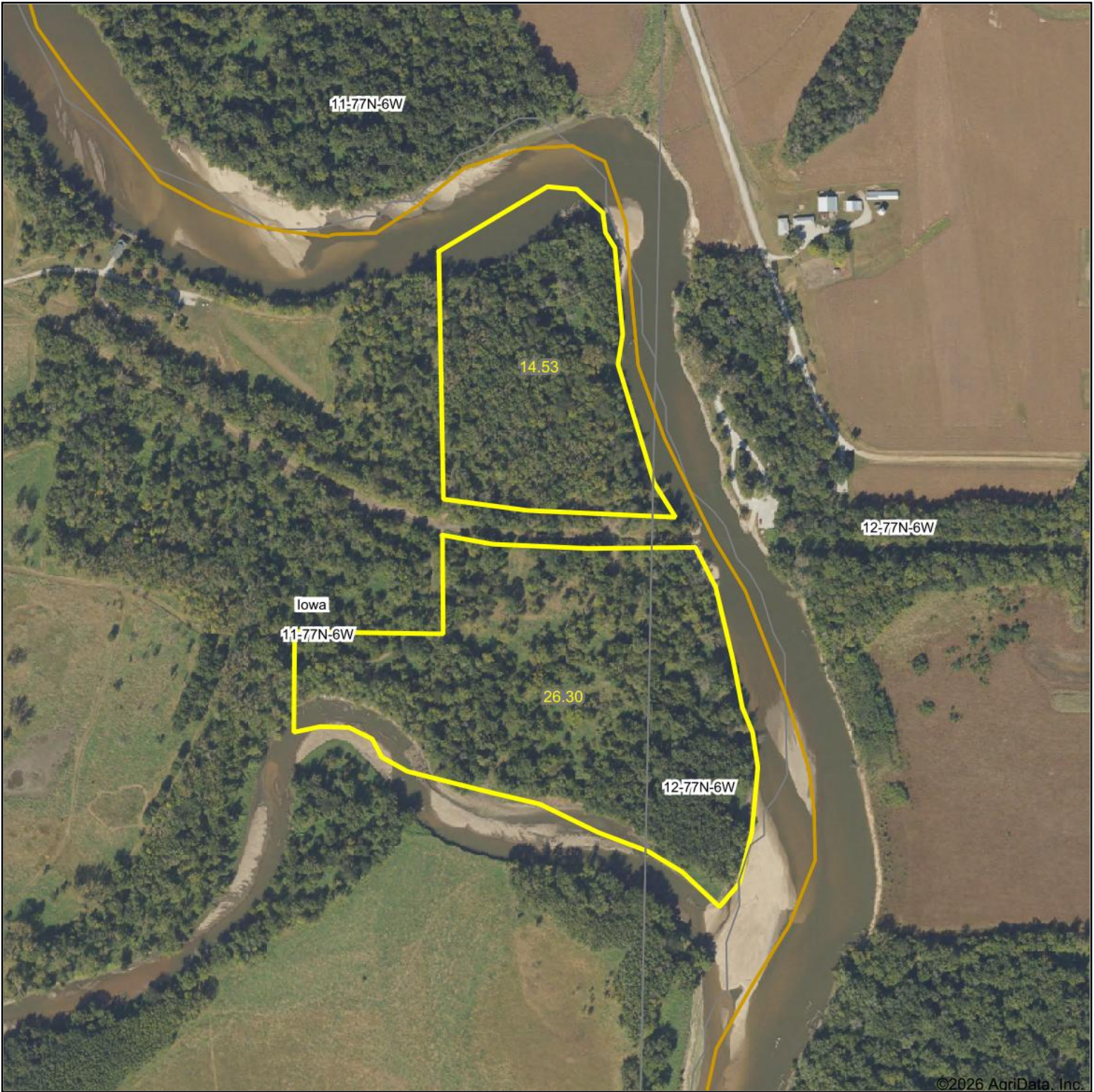
FSA INFO PACKET



A DIVISION OF WHITETAIL
PROPERTIES REAL ESTATE, LLC

RANCHANDFARMAUCTIONS.COM

Washington IA 40.83 Aerial Map



©2026 AgriData, Inc.

Boundary Center: 41.489808, -91.504836



WHITETAIL PROPERTIES REAL ESTATE
HUNTING | RANCH | FARM | TIMBER

Maps Provided By:



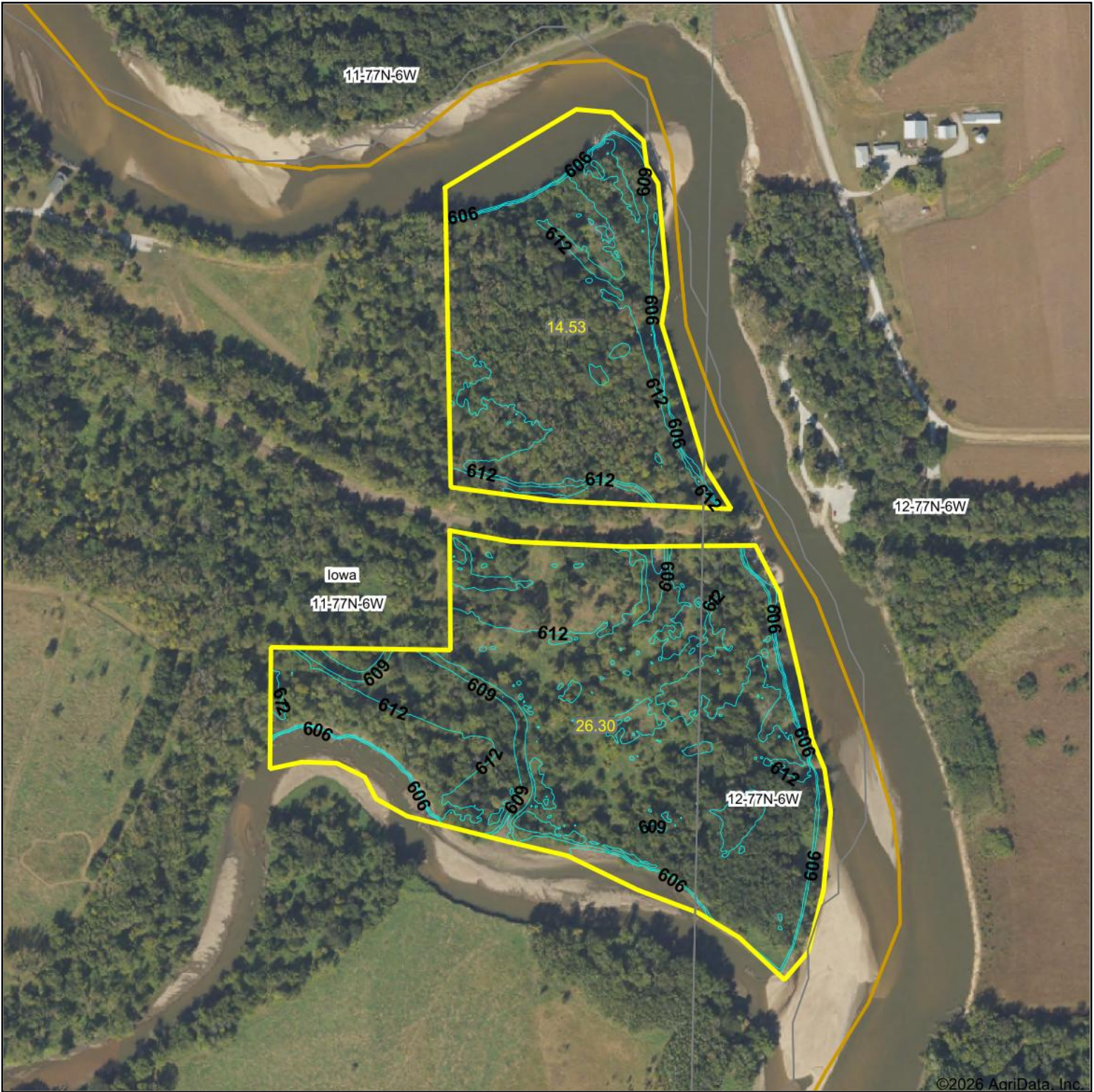
© AgriData, Inc. 2025 www.AgriDataInc.com

11-77N-6W
Washington County
Iowa



6/4/2026

Washington IA 40.83 Topography Contours



©2026 AgriData, Inc.



WHITETAIL PROPERTIES REAL ESTATE
HUNTING | RANCH | FARM | TIMBER

Maps Provided By:



© AgriData, Inc. 2025 www.AgriDataInc.com

Source: USGS 1 meter dem

Interval(ft): 3.0

Min: 603.3

Max: 617.4

Range: 14.1

Average: 610.8

Standard Deviation: 2.82 ft

0ft 432ft 863ft

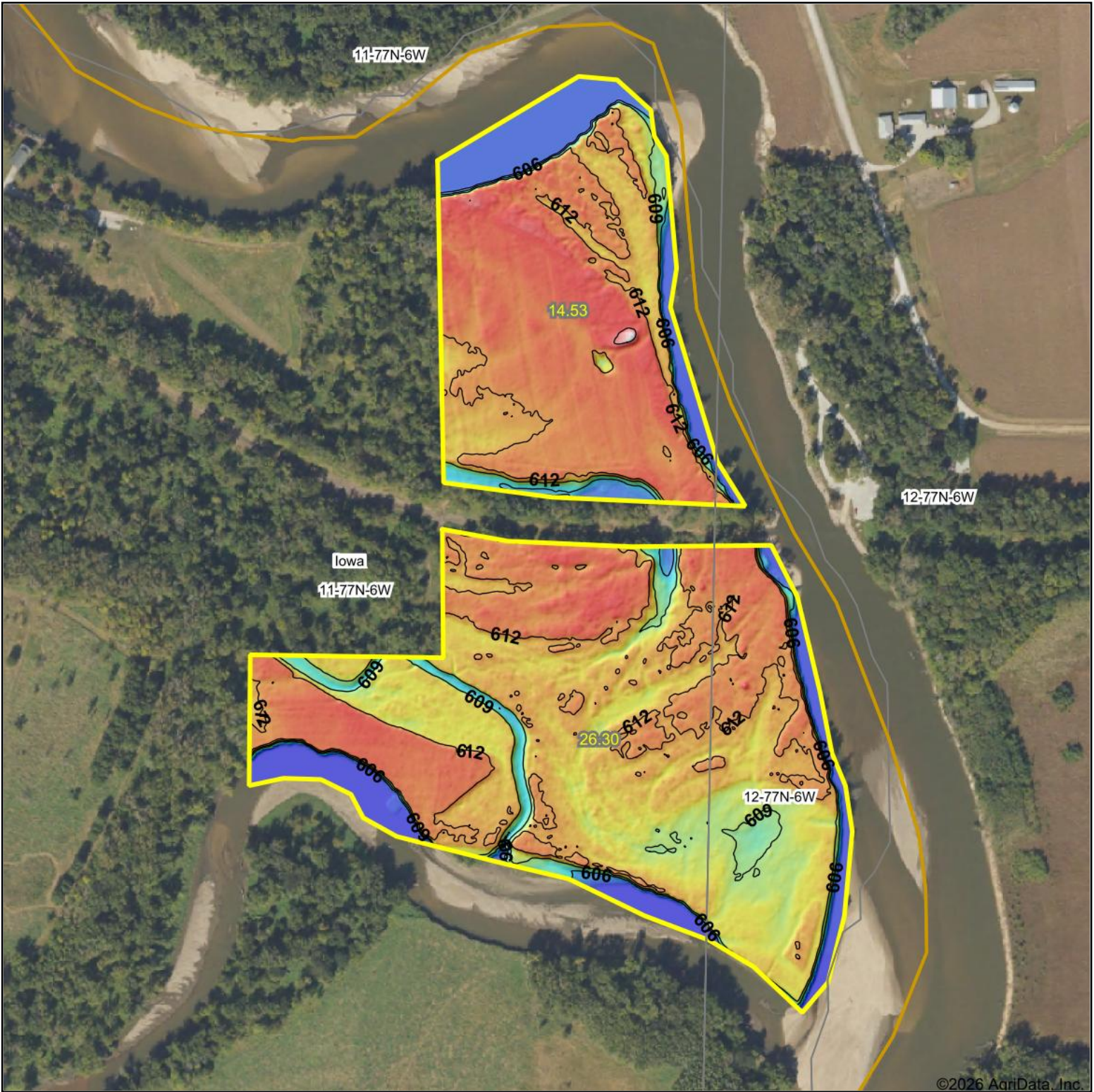


6/4/2026

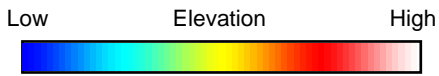
11-77N-6W
Washington County
Iowa

Boundary Center: 41.489808, -91.504836

Washington IA 40.83 Topography Hillshade



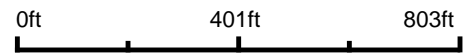
©2026 AgriData, Inc.




WHITETAIL PROPERTIES REAL ESTATE
 HUNTING | RANCH | FARM | TIMBER
 Maps Provided By:

 **surety**[®]
 CUSTOMIZED ONLINE MAPPING
 © AgriData, Inc. 2025 www.AgriDataInc.com

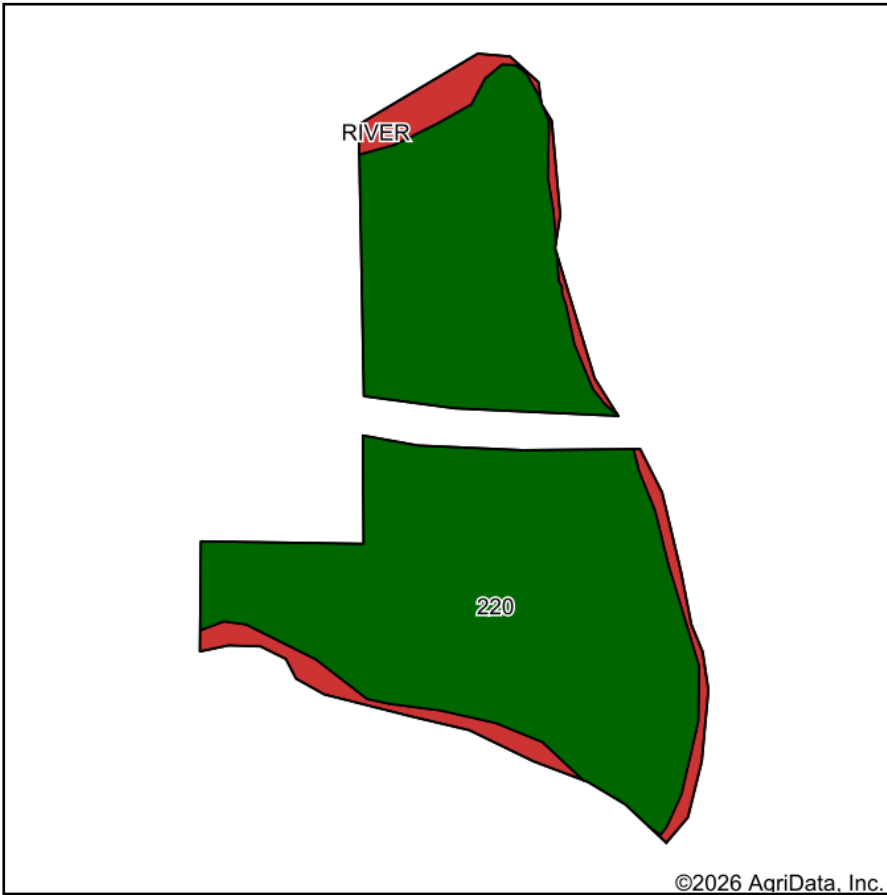
Source: USGS 1 meter dem
 Interval(ft): 3
 Min: 603.3
 Max: 617.4
 Range: 14.1
 Average: 610.8
 Standard Deviation: 2.82 ft



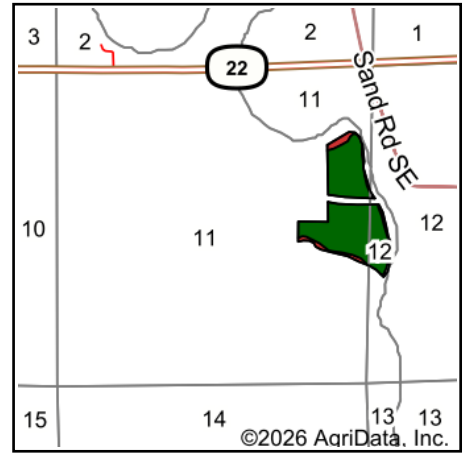
11-77N-6W
Washington County
Iowa

Boundary Center: 41.489808, -91.504836

Washington IA 40.83 Soils Map



Soils data provided by USDA and NRCS.



State: **Iowa**
 County: **Washington**
 Location: **11-77N-6W**
 Township: **Iowa**
 Acres: **40.83**
 Date: **6/4/2026**



WHITETAIL PROPERTIES REAL ESTATE
 HUNTING | RANCH | FARM | TIMBER

Maps Provided By:



© AgriData, Inc. 2025

www.AgriDataInc.com



Area Symbol: IA183, Soil Area Version: 32

Code	Soil Description	Acres	Percent of field	CSR2 Legend	Non-Irr Class	CSR2**	*n NCCPI Overall	*n NCCPI Corn	*n NCCPI Small Grains	*n NCCPI Soybeans	
220	Nodaway silt loam, shallow loess, 0 to 2 percent slopes, occasionally flooded	36.93	90.4%		Ilw	77	88	86	64	86	
RIVER	Water, rivers and streams	3.90	9.6%			0					
Weighted Average						*-	69.6	*n 79.6	*n 77.8	*n 57.9	*n 77.8

**IA has updated the CSR values for each county to CSR2.

*n: The aggregation method is "Weighted Average using all components"

*- Non Irr Class weighted average cannot be calculated on the current soils data due to missing data.