

Main Office  
2908 North Plum Street  
Hutchinson, KS 67502  
Office: (620) 665-7032  
Fax: (620) 663-7401



## Garber Surveying Service, P.A.

Branch Offices  
Manhattan 785-320-4810  
McPherson 620-241-4441  
Newton 316-283-5053  
Salina 785-404-6302  
Wichita 316-260-9933

**SURVEY FOR: WHITETAIL PROPERTIES**

**Project No. G2024-209**  
**SHEET 1 OF 6**

**DESCRIPTIONS:**

**TRACT 1**

A portion of the West Half of Section 17, Township 12 South, Range 9 West of the 6th Principal Meridian, Lincoln County, Kansas, described as follows by Nicholas D. Schmidt, PS #1492, this 26th day of March, 2024:

Beginning at the Southeast corner of said West Half; thence on a NAD 83 Kansas North Zone bearing of North 89°36'01" West on the South line of said West Half a distance of 1799.46 feet to the centerline of the Saline River; thence along said centerline for the next 19 courses:

- North 02°33'38" East a distance of 196.65 feet;
- North 24°33'43" West a distance of 265.38 feet;
- North 41°04'50" West a distance of 336.27 feet;
- North 03°58'27" West a distance of 128.91 feet;
- North 11°08'58" East a distance of 202.71 feet;
- North 15°12'41" East a distance of 79.59 feet;
- North 39°39'46" East a distance of 122.92 feet;
- North 82°17'16" East a distance of 170.49 feet;
- North 43°33'34" East a distance of 150.65 feet;
- North 22°43'12" East a distance of 326.43 feet;
- North 49°37'49" East a distance of 122.81 feet;
- North 39°26'55" East a distance of 181.29 feet;
- North 30°35'57" East a distance of 433.20 feet;
- North 74°37'14" East a distance of 213.21 feet;
- South 75°29'12" East a distance of 316.64 feet;
- South 48°04'38" East a distance of 139.46 feet;
- South 40°06'34" East a distance of 351.93 feet;
- South 17°26'02" East a distance of 414.45 feet;

South 79°21'14" East a distance of 214.45 feet to the East line of said West Half; thence South 00°32'33" West a distance of 1408.21 feet to the point of beginning;

The above described tract contains 83.26 Acres and subject to a any easements or restrictions of record.

See Sheet 2 for Tract 2 description.

**REVIEW SURVEYOR'S CERTIFICATE**

I hereby certify that this survey has been reviewed for filing, pursuant to K.S.A. 58-2005 and K.S.A. 58-2011 for content only and is in compliance with those provisions. No other warranties are extended or implied.

\_\_\_\_\_, Professional Surveyor  
Daniel E. Garber, PS #683

**DATE OF FIELD WORK:** March 20 2024

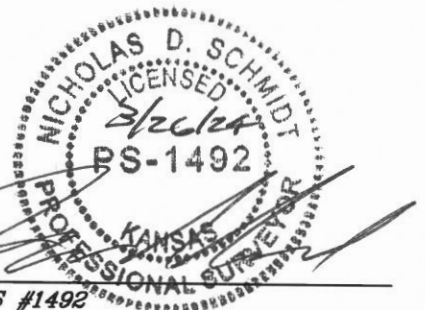
**SURVEYOR'S CERTIFICATE:**

I hereby certify this plat to be a true, correct and complete representation of the property described above as surveyed under my supervision.

Dated: March 26, 2024

Copyright © 2024 Garber Surveying Service, P.A.

Nicholas D. Schmidt, PS #1492



**Main Office**  
2908 North Plum Street  
Hutchinson, KS 67502  
Office: (620) 665-7032  
Fax: (620) 663-7401



# Garber Surveying Service, P.A.

**Branch Offices**  
Manhattan 785-320-4810  
McPherson 620-241-4441  
Newton 316-283-5053  
Salina 785-404-6302  
Wichita 316-260-9933

**SURVEY FOR: WHITETAIL PROPERTIES**

**Project No. G2024-209**  
**SHEET 2 OF 6**

**DESCRIPTIONS: (Continued)**

**TRACT 2**

A portion of the West Half of Section 17, Township 12 South, Range 9 West of the 6th Principal Meridian, Lincoln County, Kansas, described as follows by Nicholas D. Schmidt, PS #1492, this 26th day of March, 2024:

Beginning at the Southwest corner of said West Half; thence on a NAD 83 Kansas North Zone bearing of North 00°21'46" East on the West line of said West Half a distance of 2283.94 feet to the centerline of a creek, being the Southwest corner of a parcel described in Book 71, Page 329 and Book 74, Page 329 at the Lincoln County Register of Deeds Office; thence on the South line of said parcel and along said centerline of the next 16 courses:

- South 65°52'59" East a distance of 39.89 feet;
- South 45°40'18" East a distance of 44.09 feet;
- South 26°21'22" East a distance of 143.72 feet;
- South 77°13'56" East a distance of 26.34 feet;
- North 53°10'00" East a distance of 63.09 feet;
- North 25°09'38" East a distance of 572.58 feet;
- North 44°24'08" East a distance of 77.41 feet;
- South 45°45'21" East a distance of 118.59 feet;
- South 17°11'07" East a distance of 112.93 feet;
- South 22°10'21" West a distance of 48.15 feet;
- South 22°25'47" East a distance of 89.06 feet;
- North 63°29'58" East a distance of 106.34 feet;
- North 78°56'07" East a distance of 176.45 feet;
- South 68°48'07" East a distance of 136.13 feet;

South 47°17'27" East a distance of 93.81 feet; South 66°24'56" East a distance of 339.07 feet to the Southeast corner of said parcel; thence North 00°24'20" West on the East line of said parcel a distance of 1019.40 feet to the Northeast corner of said parcel; thence South 85°20'07" West on the North line of said parcel a distance of 356.49 feet; thence South 26°21'05" West continuing on said line a distance of 93.13 feet to the West line of said West Half; thence North 00°10'18" East on said West line a distance of 2271.76 feet to the Northwest corner of said West Half; thence South 89°13'41" East on the North line of said West Half a distance of 2661.98 feet to the Northeast corner of said West Half; thence South 00°32'33" West on the East line of said West Half a distance of 3877.22 feet to the centerline of the Saline River; thence along said centerline for the next 19 courses:

- North 79°21'14" West a distance of 214.45 feet;
- North 17°26'02" West a distance of 414.45 feet;
- North 40°06'34" West a distance of 351.93 feet;
- North 48°04'38" West a distance of 139.46 feet;
- North 75°29'12" West a distance of 316.64 feet;
- South 74°37'14" West a distance of 213.21 feet;
- South 30°35'57" West a distance of 433.20 feet;
- South 39°26'55" West a distance of 181.29 feet;
- South 49°37'49" West a distance of 122.81 feet;
- South 22°43'12" West a distance of 326.43 feet;
- South 43°33'34" West a distance of 150.65 feet;
- South 82°17'16" West a distance of 170.49 feet;
- South 39°39'46" West a distance of 122.92 feet;
- South 15°12'41" West a distance of 79.59 feet;
- South 11°08'58" West a distance of 202.71 feet;
- South 03°58'27" East a distance of 128.91 feet;
- South 41°04'50" East a distance of 336.27 feet;
- South 24°33'43" East a distance of 265.38 feet;

South 02°33'38" West a distance of 196.65 feet to the South line of said West Half; thence North 89°36'01" West on said South line a distance of 837.15 feet to the point of beginning;

The above described tract contains 214.70 Acres and subject to a any easements or restrictions of record.

Main Office  
2908 North Plum Street  
Hutchinson, KS 67502  
Office: (620) 665-7032  
Fax: (620) 663-7401

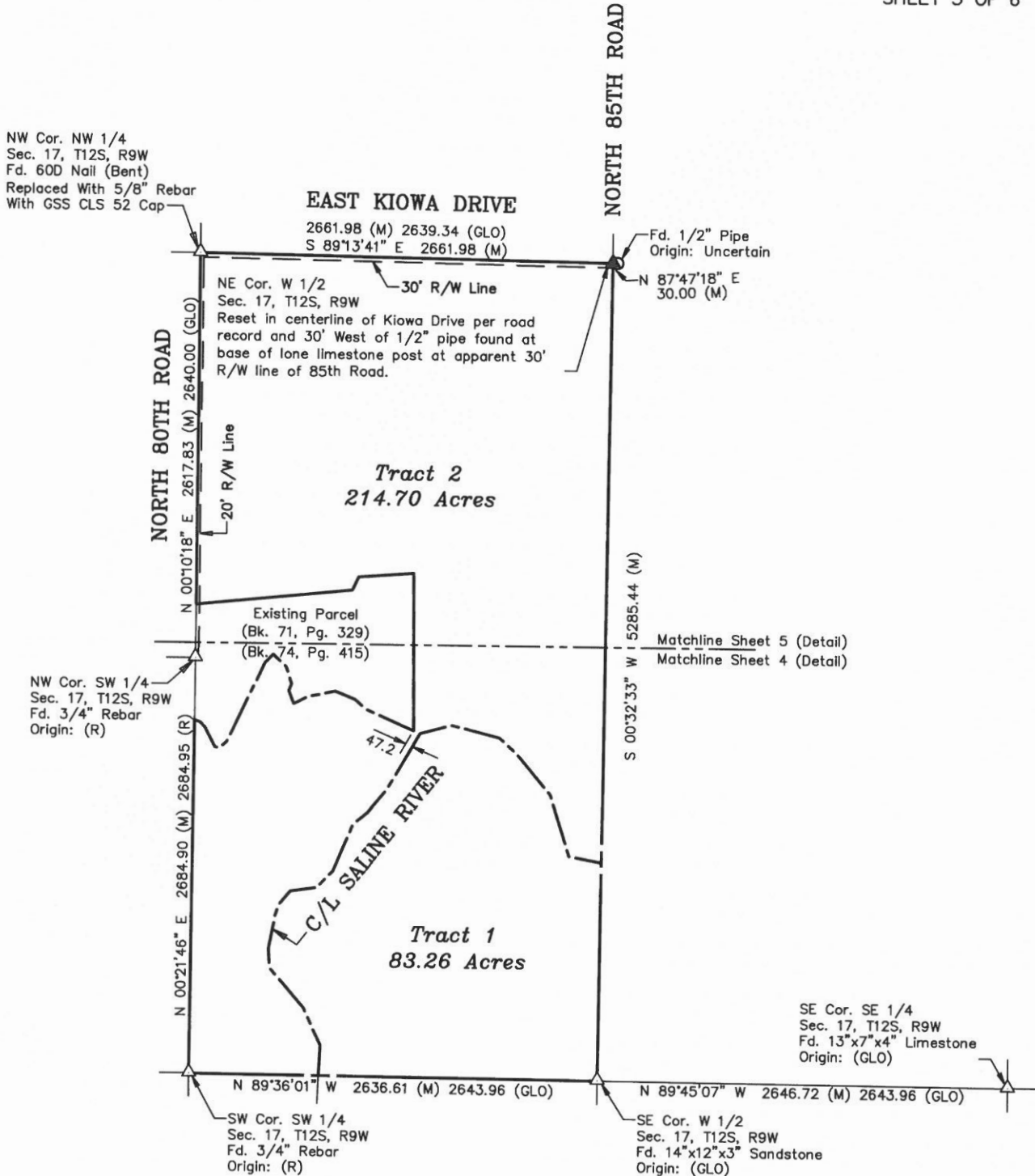


# Garber Surveying Service, P.A.

Branch Offices  
Manhattan 785-320-4810  
McPherson 620-241-4441  
Newton 316-283-5053  
Salina 785-404-6302  
Wichita 316-260-9933

SURVEY FOR: WHITETAIL PROPERTIES

Project No. G2024-209  
SHEET 3 OF 6



## LEGEND

- △ - Sectional Monument Found
- ▲ - Section Monument Set (5/8" x 24" Iron Rebar w/GSS CLS 52 Cap)
- - 5/8" x 24" Iron Rebar Set w/GSS CLS 52 Cap
- ⊙ - 5/8" x 24" Iron Rebar Set w/GSS Blue Line Point Cap
- (C) - Calculated
- (M) - Measured
- (R) - Record Measurement (Bk. 71, Pg. 329)
- GLO - General Land Office

## SURVEYOR'S NOTES:

- Survey was made as per client request and no title work has been provided to the surveyor; therefore, the number and extent of easements and/or rights-of-way of record affecting said property has not been verified by this Survey.
- All measurements are in US Survey Feet.
- See Sheets 4 and 5 for tract details.

Scale: 1" = 1000'  
BASIS OF BEARING  
= NAD 83 KANSAS  
NORTH ZONE

Main Office  
2908 North Plum Street  
Hutchinson, KS 67502  
Office: (620) 665-7032  
Fax: (620) 663-7401

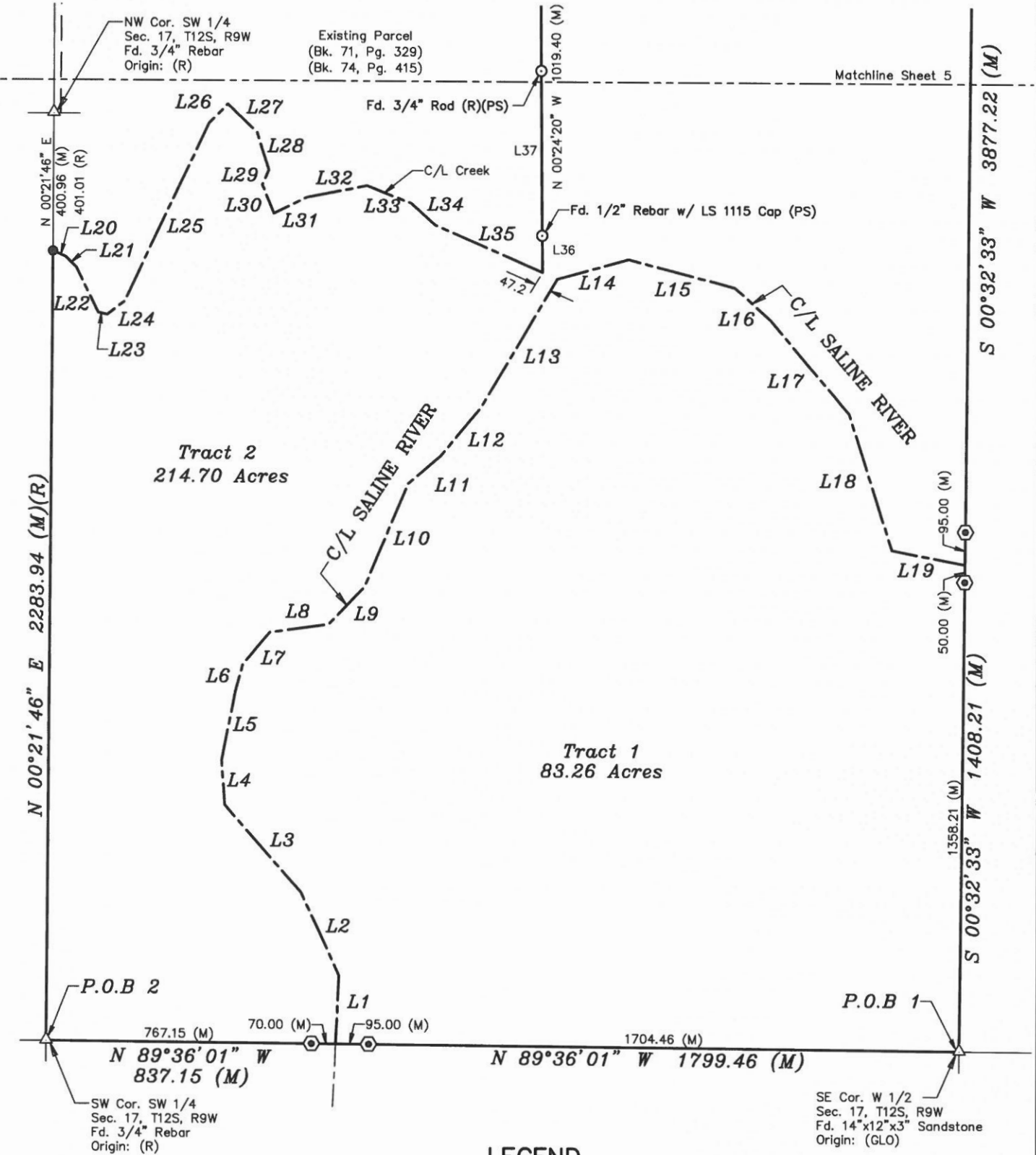


Garber Surveying Service, P.A.

Branch Offices  
Manhattan 785-320-4810  
McPherson 620-241-4441  
Newton 316-283-5053  
Salina 785-404-6302  
Wichita 316-260-9933

SURVEY FOR: WHITETAIL PROPERTIES

Project No. G2024-209  
SHEET 4 OF 6



LEGEND

- △ - Sectional Monument Found
- - Survey Monument Found
- - 5/8" x 24" Iron Rebar Set w/GSS CLS 52 Cap
- ⊙ - 5/8" x 24" Iron Rebar Set w/GSS Blue Line Point Cap
- (C) - Calculated
- (M) - Measured
- (R) - Record Measurement (Bk. 71, Pg. 329)
- (PS) - Previous Survey By LS 1115 8/9/2010
- P.O.B. - Point of Beginning

NOTE:

1. See Sheet 6 for Line Table.

Scale: 1" = 400'  
BASIS OF BEARING  
= NAD 83 KANSAS  
NORTH ZONE

Main Office  
2908 North Plum Street  
Hutchinson, KS 67502  
Office: (620) 665-7032  
Fax: (620) 663-7401

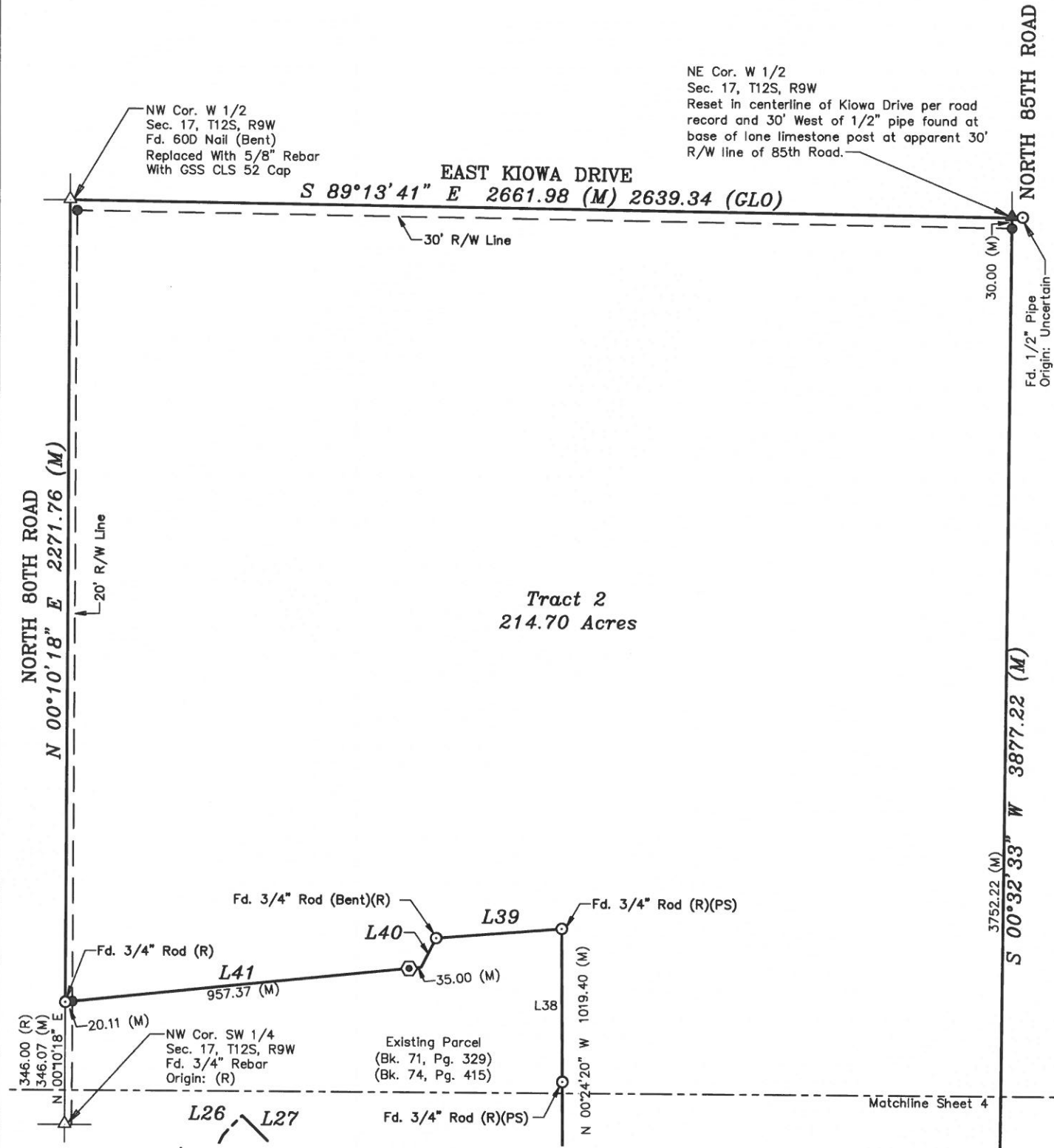


# Garber Surveying Service, P.A.

Branch Offices  
Manhattan 785-320-4810  
McPherson 620-241-4441  
Newton 316-283-5053  
Salina 785-404-6302  
Wichita 316-260-9933

SURVEY FOR: WHITETAIL PROPERTIES

Project No. G2024-209  
SHEET 5 OF 6



## LEGEND

- △ - Sectional Monument Found
- - Survey Monument Found
- - 5/8" x 24" Iron Rebar Set w/GSS CLS 52 Cap
- ⊙ - 5/8" x 24" Iron Rebar Set w/GSS Blue Line Point Cap
- (C) - Calculated
- (M) - Measured
- (R) - Record Measurement (Bk. 71, Pg. 329)
- (PS) - Previous Survey By LS 1115 8/9/2010
- P.O.B. - Point of Beginning
- GLO - General Land Office

## NOTE:

- See Sheet 6 for Line Table.

Scale: 1" = 400'  
BASIS OF BEARING  
= NAD 83 KANSAS  
NORTH ZONE



Main Office  
2908 North Plum Street  
Hutchinson, KS 67502  
Office: (620) 665-7032  
Fax: (620) 663-7401



Garber Surveying Service, P.A.

Branch Offices  
Manhattan 785-320-4810  
McPherson 620-241-4441  
Newton 316-283-5053  
Salina 785-404-6302  
Wichita 316-260-9933

SURVEY FOR: WHITETAIL PROPERTIES

Project No. G2024-209  
SHEET 6 OF 6

LINE TABLE		
Line	Bearing	Length
L1	N 02°33'38" E	196.65 (M)
L2	N 24°33'43" W	265.38 (M)
L3	N 41°04'50" W	336.27 (M)
L4	N 03°58'27" W	128.91 (M)
L5	N 11°08'58" E	202.71 (M)
L6	N 15°12'41" E	79.59 (M)
L7	N 39°39'46" E	122.92 (M)
L8	N 82°17'16" E	170.49 (M)
L9	N 43°33'34" E	150.65 (M)
L10	N 22°43'12" E	326.43 (M)
L11	N 49°37'49" E	122.81 (M)
L12	N 39°26'55" E	181.29 (M)
L13	N 30°35'57" E	433.20 (M)
L14	N 74°37'14" E	213.21 (M)
L15	S 75°29'12" E	316.64 (M)
L16	S 48°04'38" E	139.46 (M)
L17	S 44°06'34" E	351.93 (M)
L18	S 17°26'02" E	414.45 (M)
L19	S 79°21'14" E	214.45 (M)
L20	S 65°52'59" E	39.89 (M)
L21	S 45°40'18" E	44.09 (M)
L22	S 26°21'22" E	143.72 (M)
L23	S 77°13'56" E	26.34 (M)
L24	N 53°10'00" E	63.09 (M)
L25	N 25°09'38" E	572.58 (M)
L26	N 44°24'08" E	77.41 (M)
L27	S 45°45'21" E	118.59 (M)
L28	S 17°11'07" E	112.93 (M)
L29	S 22°10'21" W	48.15 (M)
L30	S 22°25'47" E	89.06 (M)
L31	N 63°29'58" E	106.34 (M)
L32	N 78°56'07" E	176.45 (M)
L33	S 68°48'07" E	136.13 (M)
L34	S 47°17'27" E	93.81 (M)
L35	S 66°24'56" E	339.07 (M)
L36	N 00°24'40" W	105.83 (M) 97.81 (PS)
L37	N 00°24'40" W	479.10 (M) 479.08 (PS)
L38	N 00°24'40" W	434.47 (M)(PS) 435.00 (R)
L39	S 85°21'31" W	356.49 (M) 356.48 (R)
L40	S 26°21'05" W	93.13 (C) 93.22 (R)
L41	S 84°03'28" W	1012.61 (C) 1012.67 (R)