

LAND AUCTION



214.70 AC± | 1 TRACT | LINCOLN CO, KS

AUCTION: LIVE AND ONLINE AT RANCHANDFARMAUCTIONS.COM

AUCTION DATE: 5/28/25 | **AUCTION TIME:** 11:00 AM CT

AUCTION LOCATION: AMERICAN LEGION POST 359
104 NORTH MAIN ST, SYLVAN GROVE, KS

If you're looking for a top-end tillable farm in North Central Kansas, this one-of-a-kind tract along the Saline River features fertile cropland soils, as well as excellent hunting along the Saline River! This 214.70-acre farm lies north of the center of the Saline River and features over 193 acres of excellent cropland, with immediate possession of all open acres. Buyer will receive possession of all acres currently planted to wheat upon completion of the 2025 wheat harvest.



Deeded acres:	214.70
FSA Farmland Acres:	193.52
Soil Types:	Roxbury silt loam, McCook silt loam, Harney silt loam
Soil PI/NCCPI/CSR2:	65.40
CRP Acres/payment:	0.00
Taxes:	TBD
Lease Status:	Planted wheat acres are leased until harvest. Idle acres are open.
Possession:	Subject to Tenant Rights on wheat acres only
Survey needed?:	No survey needed
Brief Legal:	214.70 acres within W ½ of Section 17-12-9 in Lincoln County, KS
PIDs:	Part of 144-17-0-00-00-003.00-0
Lat/Lon:	39.00902, -98.34829
Zip Code:	67481

The Saline River offers prime whitetail and turkey hunting opportunities in one of the top trophy hunting areas in the state! Excellent opportunities for personal hunting success or additional income from potential hunting lease possibilities. All mineral rights are believed to be intact and will be transferred to the buyer upon closing. This farm checks all the boxes for local farm operators, land investors and trophy hunters looking for a prime piece of Kansas real estate!

IN COOPERATION WITH WHITETAIL PROPERTIES REAL ESTATE, LLC

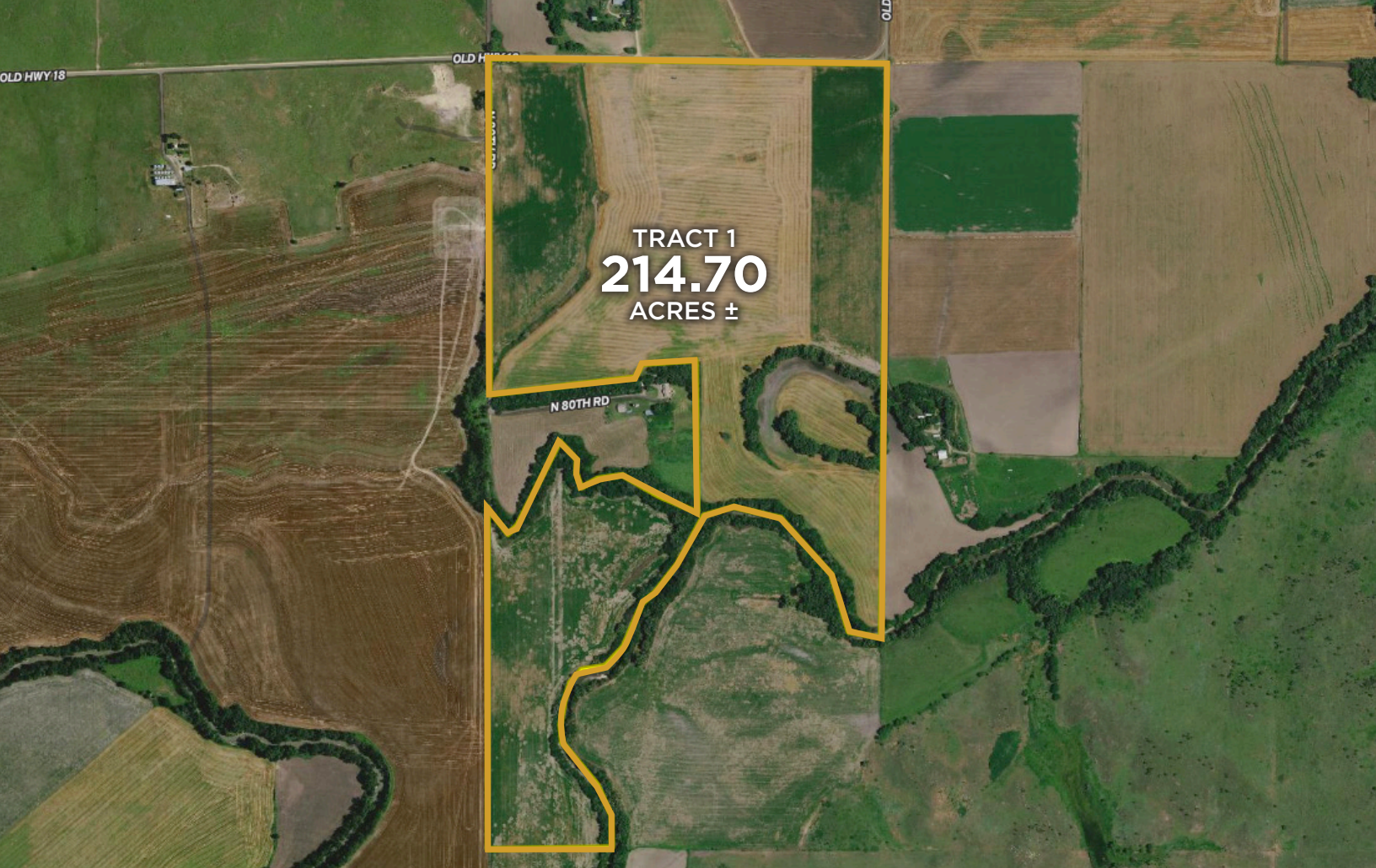
ADAM HANN, AGENT: 785.259.2469 | adam.hann@whitetailproperties.com

MITCH KEELEY, AGENT: 785.259.0492 | mitch.keeley@whitetailproperties.com

RANCHANDFARMAUCTIONS.COM

GO TO RANCHANDFARMAUCTIONS.COM FOR ADDITIONAL INFORMATION, PHOTOS, SOIL MAPS AND TERMS.

IN COOPERATION WITH WHITETAIL PROPERTIES REAL ESTATE LLC | Jefferson Kirk Gilbert, Ranch & Farm Auctions (CO00002929), Kansas Broker License # 00237080 | Joe Gizdic, Director, Ranch & Farm Auctions, 217.299.0332
Adam Hann, Kansas Land Specialist for Whitetail Properties Real Estate, LLC, 785.259.2469 | Mitch Keeley, Kansas Land Specialist for Whitetail Properties Real Estate, LLC, 785.259.0492 | Brandon Hamel, Auctioneer



214.70 AC± | 1 TRACT | LINCOLN CO, KS

AUCTION: LIVE AND ONLINE AT RANCHANDFARMAUCTIONS.COM

AUCTION DATE: 5/28/25 | **AUCTION TIME:** 11:00 AM CT

AUCTION LOCATION: AMERICAN LEGION POST 359
104 NORTH MAIN ST, SYLVAN GROVE, KS



IN COOPERATION WITH WHITETAIL PROPERTIES REAL ESTATE, LLC

ADAM HANN, AGENT: 785.259.2469 | adam.hann@whitetailproperties.com
MITCH KEELEY, AGENT: 785.259.0492 | mitch.keeley@whitetailproperties.com

RANCHANDFARMAUCTIONS.COM

GO TO RANCHANDFARMAUCTIONS.COM FOR ADDITIONAL INFORMATION, PHOTOS, SOIL MAPS AND TERMS.

IN COOPERATION WITH WHITETAIL PROPERTIES REAL ESTATE LLC | Jefferson Kirk Gilbert, Ranch & Farm Auctions (CO00002929), Kansas Broker License # 00237080 | Joe Gizdic, Director, Ranch & Farm Auctions, 217.299.0332
Adam Hann, Kansas Land Specialist for Whitetail Properties Real Estate, LLC, 785.259.2469 | Mitch Keeley, Kansas Land Specialist for Whitetail Properties Real Estate, LLC, 785.259.0492 | Brandon Hamel, Auctioneer