

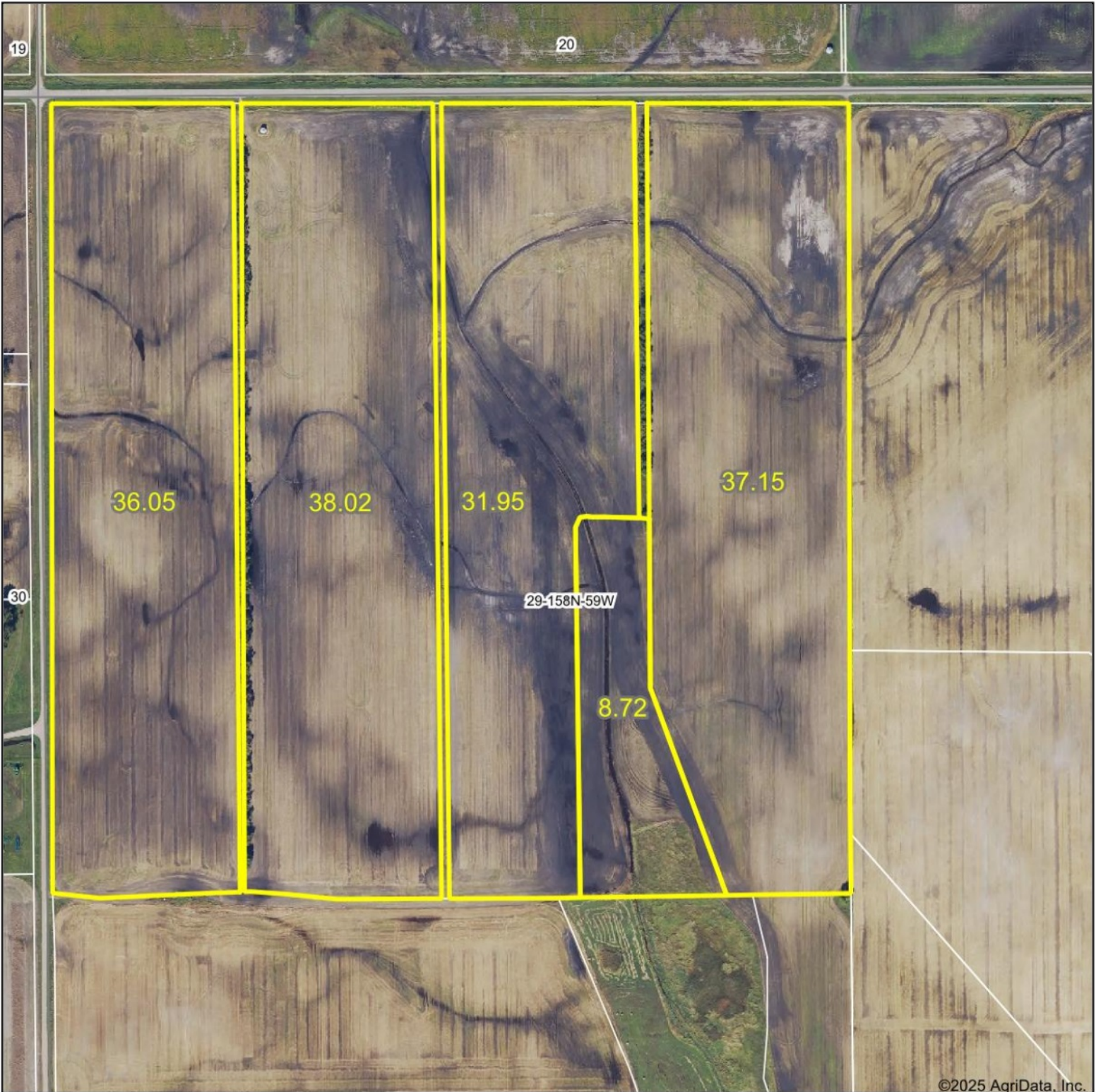
FSA INFO PACKET



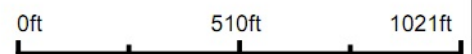
A DIVISION OF WHITETAIL
PROPERTIES REAL ESTATE, LLC

RANCHANDFARMAUCTIONS.COM

Aerial Map



Boundary Center: 48° 28.9207', -98° 17.4668'



WHITETAIL PROPERTIES REAL ESTATE
HUNTING | RANCH | FARM | TIMBER

Maps Provided By:



© AgriData, Inc. 2023 www.AgriDataInc.com

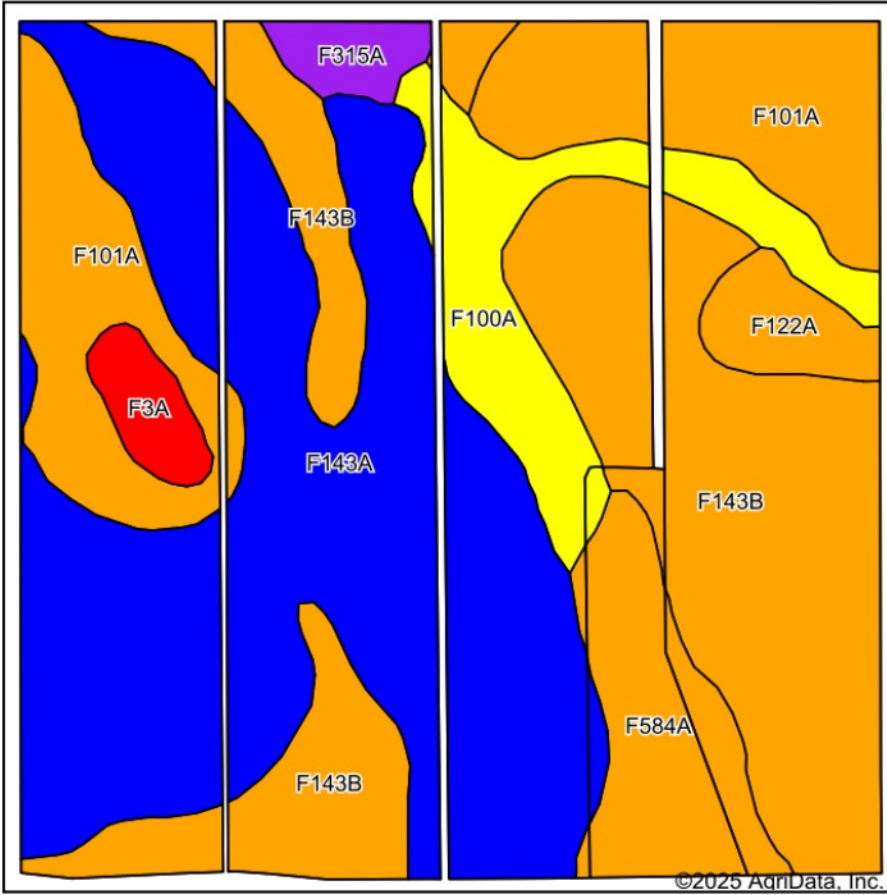
29-158N-59W
Walsh County
North Dakota



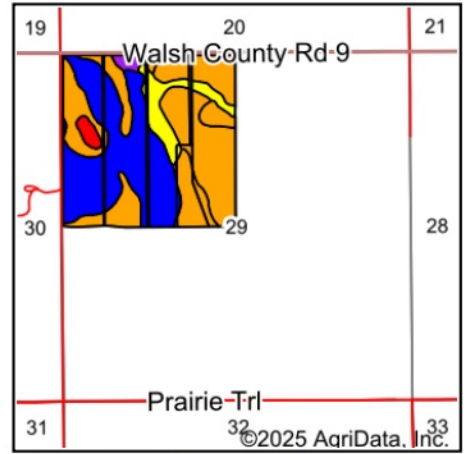
1/8/2025

Field borders provided by Farm Service Agency as of 5/21/2008.

Soils Map



Soils data provided by USDA and NRCS.



State: **North Dakota**
 County: **Walsh**
 Location: **29-158N-59W**
 Township: **Kinloss**
 Acres: **151.89**
 Date: **1/8/2025**



WHITETAIL PROPERTIES REAL ESTATE
 HUNTING | RANCH | FARM | TIMBER

Maps Provided By:



© AgriData, Inc. 2023

www.AgriDataInc.com



Area Symbol: ND099, Soil Area Version: 25

Code	Soil Description	Acres	Percent of field	PI Legend	Non-Irr Class *c	Productivity Index
F143A	Barnes-Svea loams, 0 to 3 percent slopes	56.49	37.2%		IIC	85
F143B	Barnes-Svea loams, 3 to 6 percent slopes	42.13	27.7%		IIE	75
F101A	Hamerly-Wyard loams, 0 to 3 percent slopes	23.25	15.3%		IIE	77
F100A	Hamerly-Tonka complex, 0 to 3 percent slopes	11.51	7.6%		IIE	64
F584A	Edgeley loam, 0 to 2 percent slopes	9.68	6.4%		IIE	77
F122A	Svea-Cresbard loams, 0 to 3 percent slopes	4.22	2.8%		IIC	79
F3A	Parnell silty clay loam, 0 to 1 percent slopes	2.43	1.6%		VW	25
F315A	Vang-Brantford loams, 0 to 2 percent slopes	2.18	1.4%		IIS	55
Weighted Average					2.05	77.3

*c: Using Capabilities Class Dominant Condition Aggregation Method