

# HOW TO BID

with





# STEP 1: Placing a bid in a Timed Online Auction or Pre-Bid

Create an online bidder account at *ranchandfarmauctions.nextlot.com* by clicking the “Register / Login” button at the top of your web browser or the “Register to bid” button on the lot you wish to bid on.



LAND AUCTIONS CALENDAR HOW IT WORKS EQUIPMENT AUCTIONS WHY US? CONTACT US

Get Help **Register / Login**

**\*\*Prebidding Closes 1 Hour Prior to the Live Webcast. Both Live and Online bidding to resume at the Auction start time\*\***

## Active Auctions // currently running or upcoming

Search lots

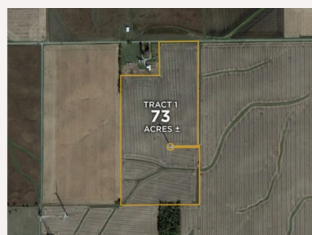
COMBINED PREBID & WEBCAST  
Ⓢ RUNNING

**73+/- Acres In McLean Co, IL**

LOTS

1

📍 Online Bidding



Pre-bidding closes on Jan 9 at 9:00AM CST  
Webcast starts on Jan 9 at 10:00AM CST

SUMMARY

Productive tillable farm with additional wind turbine lease.

**Register to bid**

View lots

## Register your bidder account

Your account email

**your.email@example.com**

First name

Last name

Set your password

Confirm your password

minimum 8 characters, at least 1 capital letter and at least 1 digit or special character

I accept the Bidder Account Terms & Conditions and Privacy Policy.

**Create my account**

**STEP 2:**  
fill out the prompted fields for your account information, accept the terms, and click “Create my account”.



## Welcome to Ranch & Farm Online Auctions!

Thank you for registering to bid online with Ranch & Farm Auctions. Now that you are registered to bid, you can follow these easy steps and you will be ready to start bidding:

1. Proceed to <https://ranchandfarmauctions.nextlot.com/auctions> to access our online bidding page and log in with your email and password.
2. Click the "Request to Bid" button for the auction in which you wish to bid.
3. Accept the Terms and Conditions for the auction and follow the steps required to be approved to bid.

If you have any questions feel free to call our technical support line at **217-291-6575**. Good Luck & Happy Bidding!

Sincerely,

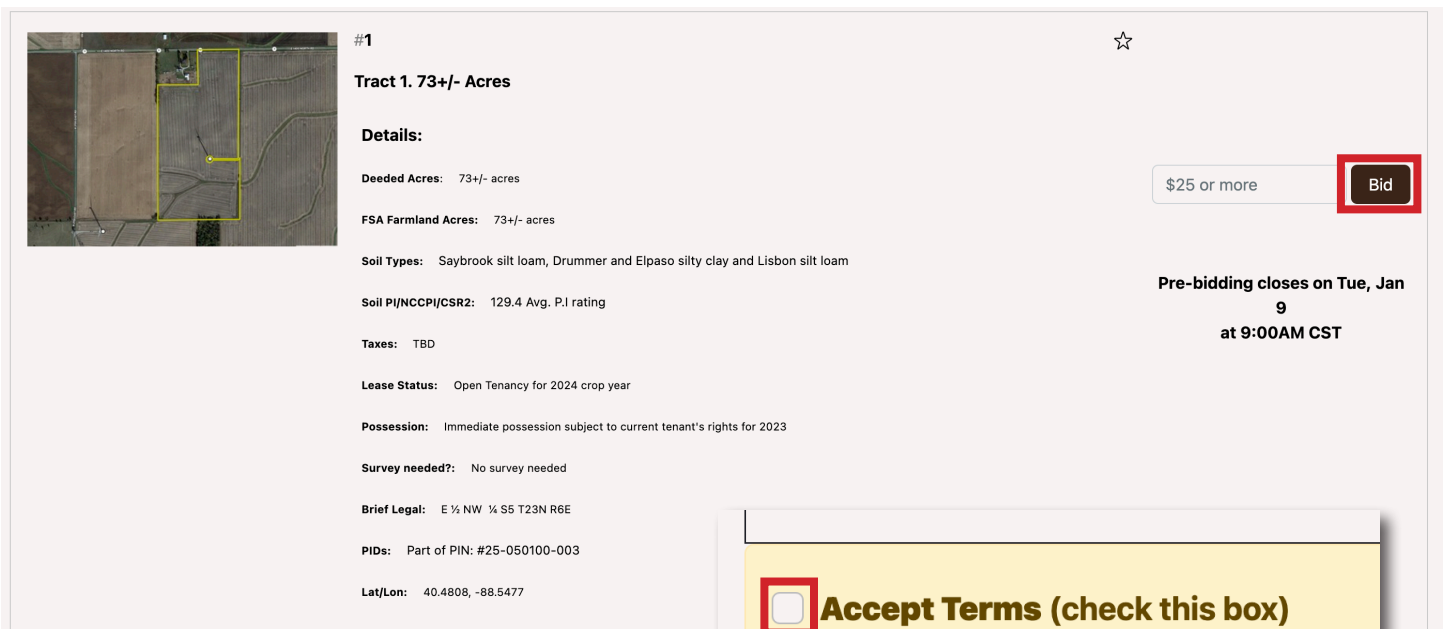
Ranch & Farm Auctions

## STEP 3:

You will receive a confirmation email with step-by-step instructions on how to bid and a technical support phone number if you run into any issues.

## STEP 4:

After successfully signing up (you will see your name in the right hand corner of the web browser) please click "Bid" next to the sale of interest. In the next prompt, check the "Accept Terms" box and click "Confirm Accept Terms" to proceed.



#1

Tract 1. 73+/- Acres

☆

**Details:**

Deeded Acres: 73+/- acres

FSA Farmland Acres: 73+/- acres

Soil Types: Saybrook silt loam, Drummer and Elpaso silty clay and Lisbon silt loam

Soil P/NCCPI/CSR2: 129.4 Avg. P.I rating

Taxes: TBD

Lease Status: Open Tenancy for 2024 crop year

Possession: Immediate possession subject to current tenant's rights for 2023

Survey needed?: No survey needed

Brief Legal: E ½ NW ¼ S5 T23N R6E

PIDs: Part of PIN: #25-050100-003

Lat/Lon: 40.4808, -88.5477

\$25 or more

**Bid**

Pre-bidding closes on Tue, Jan 9 at 9:00AM CST

**Accept Terms (check this box)**

**Confirm Accept Terms**



## STEP 5:

You will receive a confirmation email when you have been approved to bid. You may follow the prompts in the email to bid, or return to your account in the web browser. We encourage you to thoroughly read the **Terms & Conditions** before placing your bid.

Congratulations, your request to bid at **120+/- Acres In LaSalle Co, IL** has been Approved! To read the **terms and conditions** [click here](#). To view the lots and begin bidding in the auction once the auction is open, [click here](#).

### Auction Information:

Auction: 120+/- Acres In LaSalle Co, IL

Auction type: Combined Prebid & Webcast

Start Prebid Date/Time: Nov 20, 04:00pm CST

End Prebid Date/Time: Jan 09, 01:00pm CST

Auction Start Date/Time: Jan 09, 02:00pm CST

Auction Ending Date/Time: Jan 09, 06:00pm CST

Regards,

*Ranch & Farm Auctions*

## STEP 6:


Click the “View lots” button that appears to the right of the Lot.

COMBINED PREBID & WEBCAST  
© RUNNING

**120+/- Acres In LaSalle Co, IL**

Online Bidding

LOTS  
2



Pre-bidding closes on Jan 9 at 1:00PM CST  
Webcast starts on Jan 9 at 2:00PM CST

SUMMARY  
Productive tillable farm outside of Ottawa IL

Approved to bid

**View lots**






## STEP 7:

Click the "Bid" button that appears to the right of the Lot and enter your bid or maximum bid amount.

**\*\*Please note that our system functions on whole dollars (i.e. a bid of \$1000 would need to entered as "1000", NOT "1000.00")\*\***



#1 ☆

**Tract 1. 80+/- Acres**

**Tract 1 Description: 80+/- acres**

Tract 1 of the property consists of 65 tillable acres that carry an Avg. P.I. rating of 124. The primary soil types are Rutland silty clay loam, Streater silty clay loam and Graymont and Varna silt loam. This tract has been very well maintained, including the waterways that help with drainage. There is a nice 70x40 machine shed located at the front of the property, and it is located in a well-manicured yard/barn lot setting. There is a smaller trailer that is currently occupied, and water and electricity are available on site.

**Tract #: 1**

**Deeded Acres: 80+/- acres**

**Pre-bidding closes on Tue, Jan  
9  
at 1:00PM CST**

## You are about to place a bid on Lot #1

Required min bid: \$25

**Your current bid: \$25**

**Your current total bid: \$1,825 = \$25 × 73.0**

By clicking "**Place Bid**", you agree to bid \$25 × 73.0, total of \$1,825 + the Buyer's Premium of 0.0%.

**By doing so, you are entering a legally binding contract.**

Cancel

Place Bid: \$25

## QUESTIONS ABOUT ONLINE BIDDING?

Call technical support at 217.291.6575 for assistance.




# BIDDING CONTINUED

## Placing bids during a live online auction.

### STEP 1:

On the day of the auction, after being approved to bid, the live feed will be available to join shortly before the auction begins. Click “Enter webcast” to join the live online auction feed of your preferred lot. You will be directed to a new browser window.



#1  
**Tract 1. 73+/- Acres**

**Details:**

**Deeded Acres:** 73+/- acres

**FSA Farmland Acres:** 73+/- acres

**Soil Types:** Saybrook silt loam, Drummer and Elpaso silty clay and Lisbon silt loam

**Soil PI/NCCPI/CSR2:** 129.4 Avg. P.I rating

**Taxes:** TBD

**Lease Status:** Open Tenancy for 2024 crop year

**Possession:** Immediate possession subject to current tenant's rights for 2023

**Survey needed?:** No survey needed

**Brief Legal:** E 1/2 NW 1/4 S5 T23N R6E

**PIDs:** Part of PIN: #25-050100-003

**Lat/Lon:** 40.4808, -88.5477

☆

CURRENT BID  
**\$2,000** × 73.0  
TOTAL BID: \$146,000  
1 bid ▾

Approved to bid

**Enter webcast**

Webcast running



73+/- Acres In McLean Co, IL


☎ Technical Support: 217-291-6575 ☎ Auction Company: 217-285-9000

Welcome, Bidder # 3527 (Internet)

[View Full Catalog](#)

Catalog My Purchases

#1 Tract 1. 73+/- Acres [» UP NEXT](#)



**The bidding catalog. If multiple tracts are selling, you can view them here.**

Allow Catalog to track lots



Live view of our auctioneer!

Live (Video only)


Waiting for Bidding to Start

**This will turn into your bidding button once the auction begins.**


**YOUR BIDDING DASHBOARD!**

Now Bidding: Boxlot

#1 • Tract 1. 73+/- Acres



**Details on the lot that is currently open for bids.**



**Details:**

**Deeded Acres:** 73+/- acres

**FSA Farmland Acres:** 73+/- acres

**Soil Types:** Saybrook silt loam, Drummer and Elpaso silty clay and

Online Chat

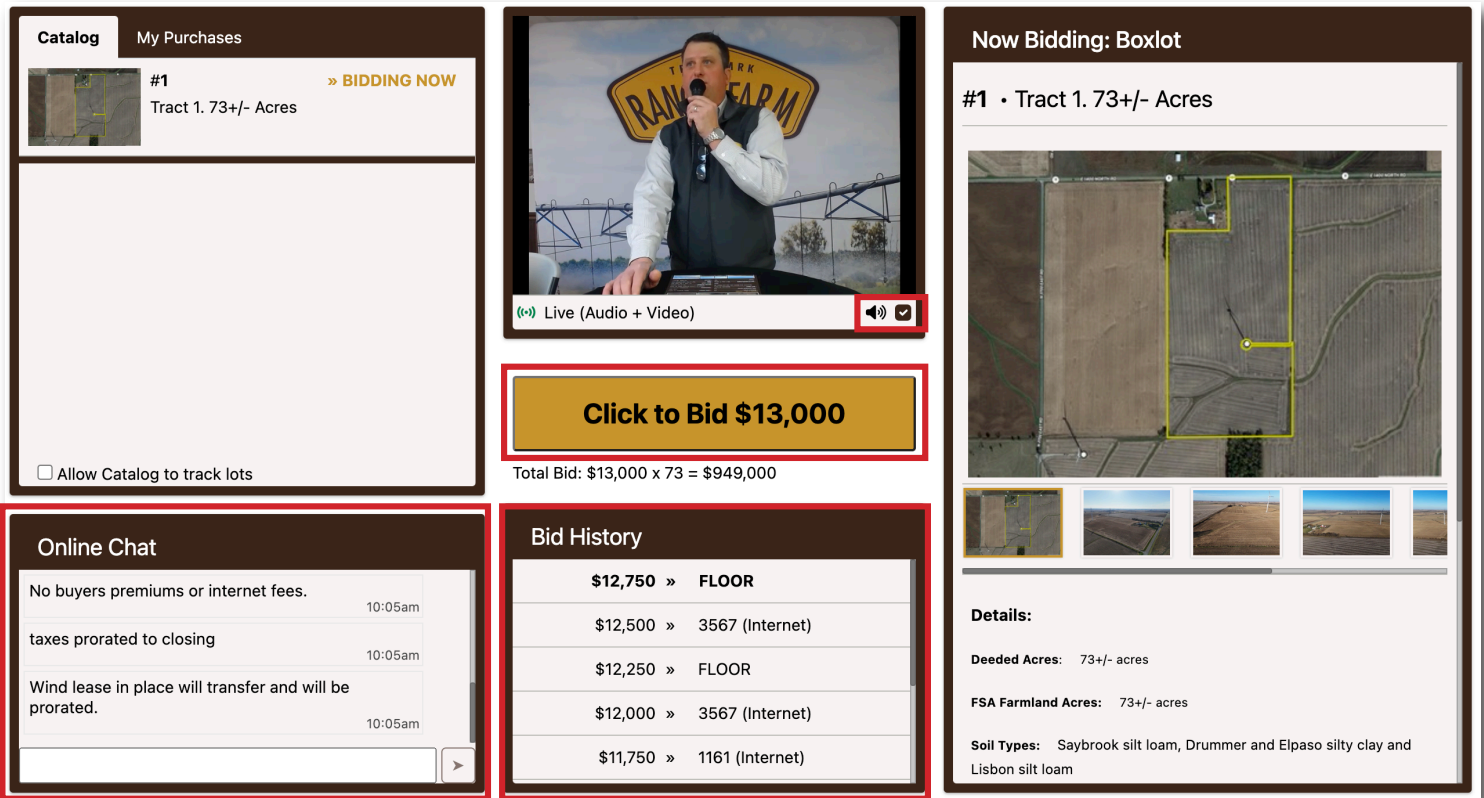
**Ask questions or request a break here. The moderator will also make short announcements here. \*Your messages are public.\***



## STEP 2:

The auction will begin and the Terms & Conditions along with any other announcements will be read out loud. Be sure to have your audio turned on 

Follow along with current bids in the “Bid History” section and keep an eye on the “Online Chat” for announcements that you may have missed.



The screenshot shows a web-based bidding interface. On the left, there is a 'Catalog' section with a map and a 'My Purchases' section. The main area features a live video feed of an auctioneer at a podium with a 'RANCH FARM' sign. Below the video is a yellow button labeled 'Click to Bid \$13,000' and a 'Total Bid: \$13,000 x 73 = \$949,000' calculation. To the right, the 'Now Bidding: Boxlot' section displays a satellite map of the tract, a row of five thumbnail images, and a 'Details' section listing 'Deeded Acres: 73+/- acres', 'FSA Farmland Acres: 73+/- acres', and 'Soil Types: Saybrook silt loam, Drummer and Elpaso silty clay and Lisbon silt loam'. At the bottom left, an 'Online Chat' window shows messages about internet fees and wind lease transfers. A 'Bid History' table is also visible, showing a list of bids with amounts and bidder IDs.

Bid Amount	Bidder ID	Notes
\$12,750	» FLOOR	
\$12,500	» 3567	(Internet)
\$12,250	» FLOOR	
\$12,000	» 3567	(Internet)
\$11,750	» 1161	(Internet)

## STEP 3:

Place your bid! The yellow button is your paddle, so once you “Click to Bid” you will be locked in with your 4 digit bidder number. Follow along with the auctioneer for further instructions. Once the auction is complete, the webcast will end and the screen will go blank. Check your email for further instructions if you placed the winning bid.

**HAPPY BIDDING & GOOD LUCK!**



**QUESTIONS  
ABOUT ONLINE  
BIDDING?**  
Call technical support at  
**217.291.6575** for assistance.



# THANK YOU FOR BIDDING

with

