

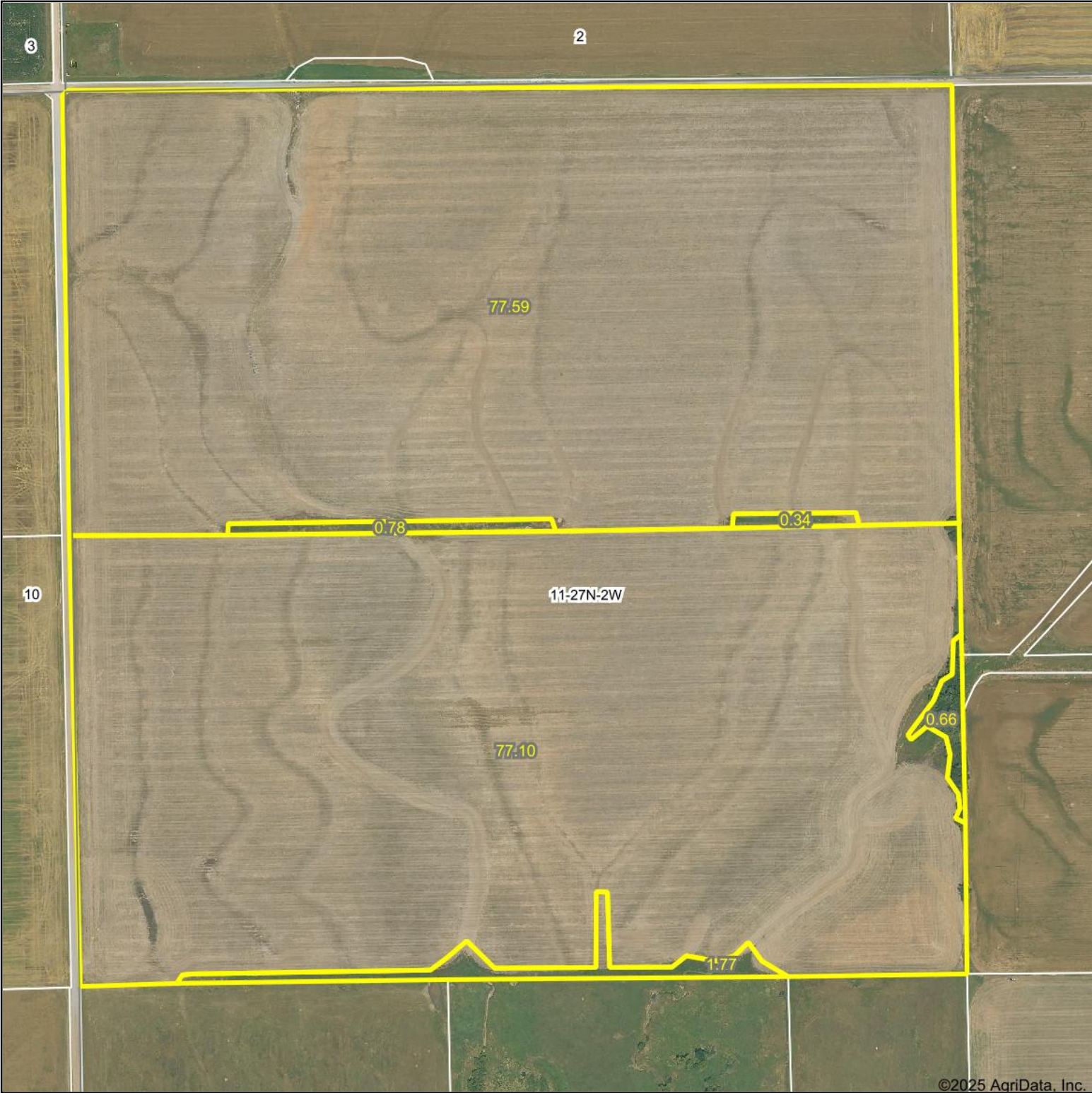
FSA INFO PACKET



A DIVISION OF WHITETAIL
PROPERTIES REAL ESTATE, LLC

RANCHANDFARMAUCTIONS.COM

Aerial Map



©2025 AgriData, Inc.

Boundary Center: 36.836580, -97.386395





WHITETAIL PROPERTIES REAL ESTATE
HUNTING | RANCH | FARM | TIMBER

Maps Provided By:



surety
CUSTOMIZED ONLINE MAPPING

© AgriData, Inc. 2023 www.AgriDataInc.com

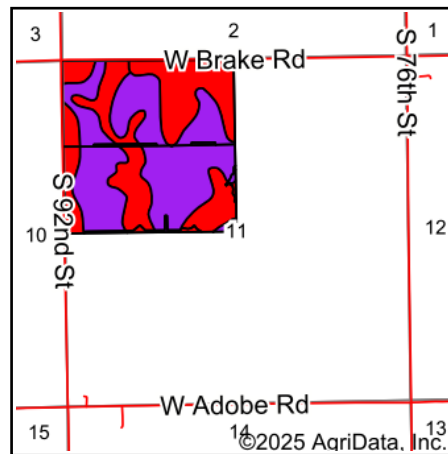
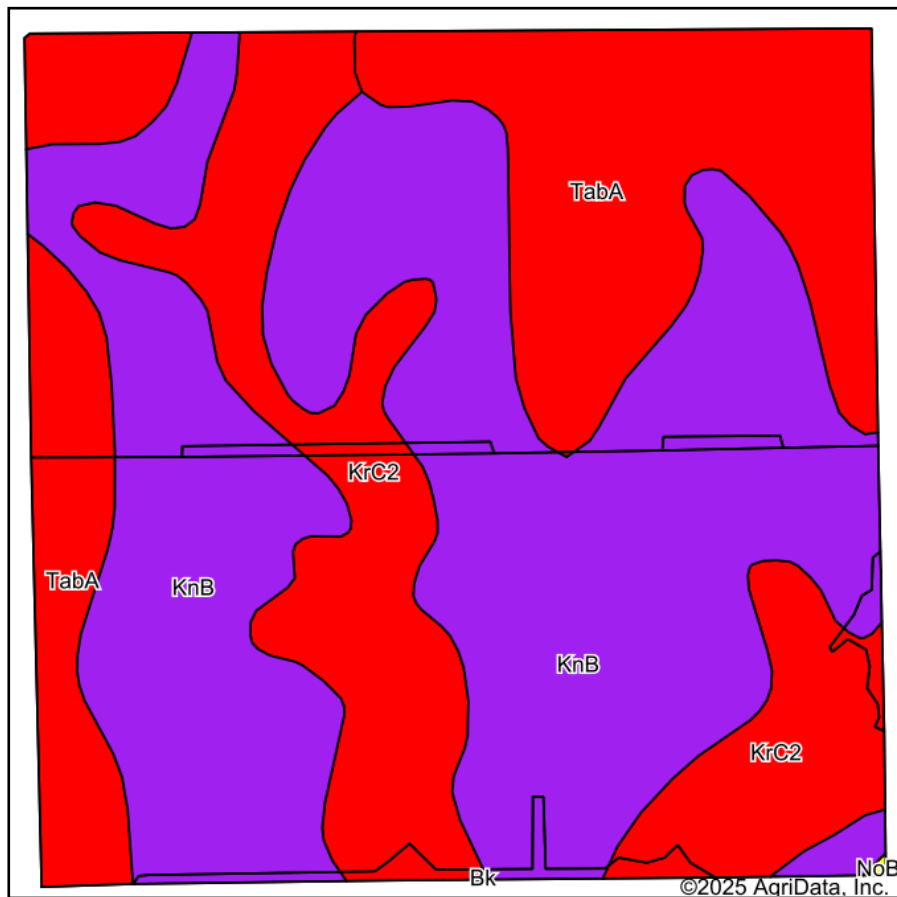
11-27N-2W
Kay County
Oklahoma



7/7/2025

Field borders provided by Farm Service Agency as of 5/21/2008.

Soils Map



State: **Oklahoma**
 County: **Kay**
 Location: **11-27N-2W**
 Township: **Blackwell**
 Acres: **158.24**
 Date: **7/7/2025**



WHITETAIL PROPERTIES REAL ESTATE
 HUNTING | RANCH | FARM | TIMBER

Maps Provided By:

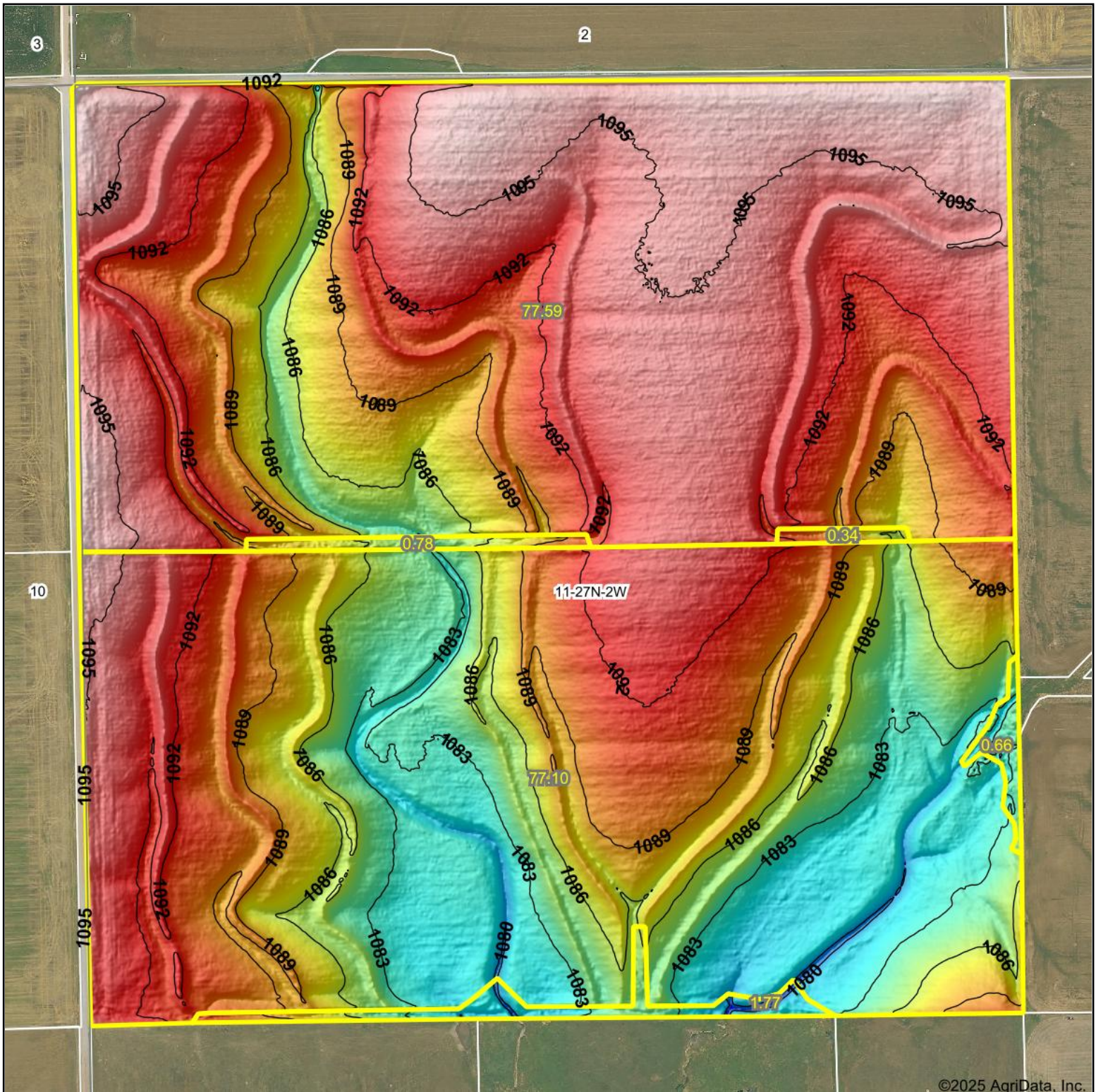


Area Symbol: OK071, Soil Area Version: 21

Code	Soil Description	Acres	Percent of field	NCCPI Overall Legend	*n NCCPI Overall	*n NCCPI Corn	*n NCCPI Small Grains	*n NCCPI Soybeans	*n NCCPI Cotton
KnB	Kirkland silt loam, 1 to 3 percent slopes	84.27	53.2%		52	39	52	51	33
TabA	Tabler silt loam, 0 to 1 percent slopes	40.50	25.6%		50	38	48	50	26
KrC2	Kirkland-Renfrow complex, 3 to 5 percent slopes, eroded	33.47	21.2%		42	29	42	37	30
Weighted Average					*n 49.4	*n 36.6	*n 48.9	*n 47.8	*n 30.6

*n: The aggregation method is "Weighted Average using all components"

Topography Hillshade



©2025 AgriData, Inc.



Source: USGS 1 meter dem

Interval(ft): 3

Min: 1,076.9

Max: 1,097.1

Range: 20.2

Average: 1,089.6

Standard Deviation: 4.36 ft



11-27N-2W
Kay County
Oklahoma

Boundary Center: 36.836580, -97.386395



WHITETAIL PROPERTIES REAL ESTATE
HUNTING | RANCH | FARM | TIMBER

Maps Provided By:



© AgriData, Inc. 2023 www.AgriDataInc.com

Field borders provided by Farm Service Agency as of 5/21/2008.