

# FSA INFO PACKET



## FSA PACKET SANILAC MI 40

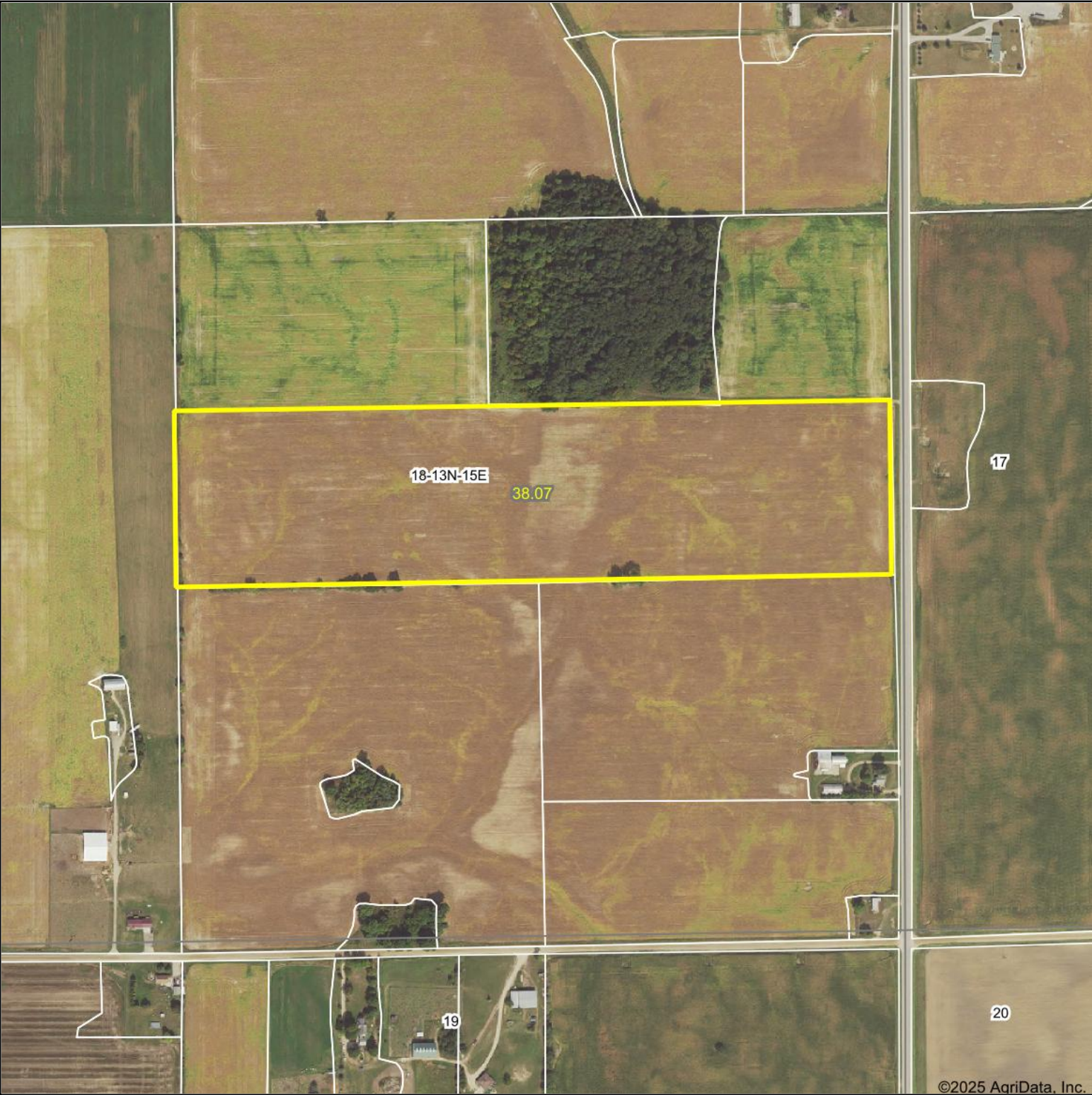


A DIVISION OF WHITETAIL  
PROPERTIES REAL ESTATE, LLC

[RANCHANDFARMAUCTIONS.COM](http://RANCHANDFARMAUCTIONS.COM)



Aerial Map



©2025 AgriData, Inc.

Boundary Center: 43.560059, -82.741166



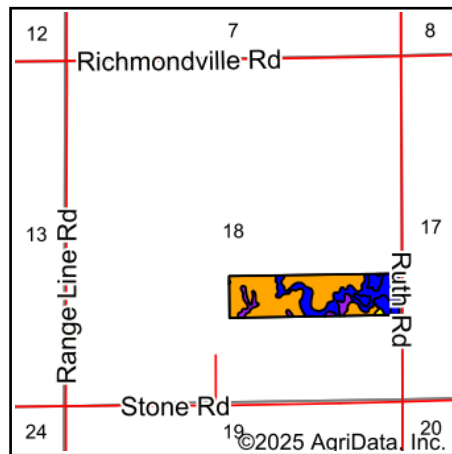
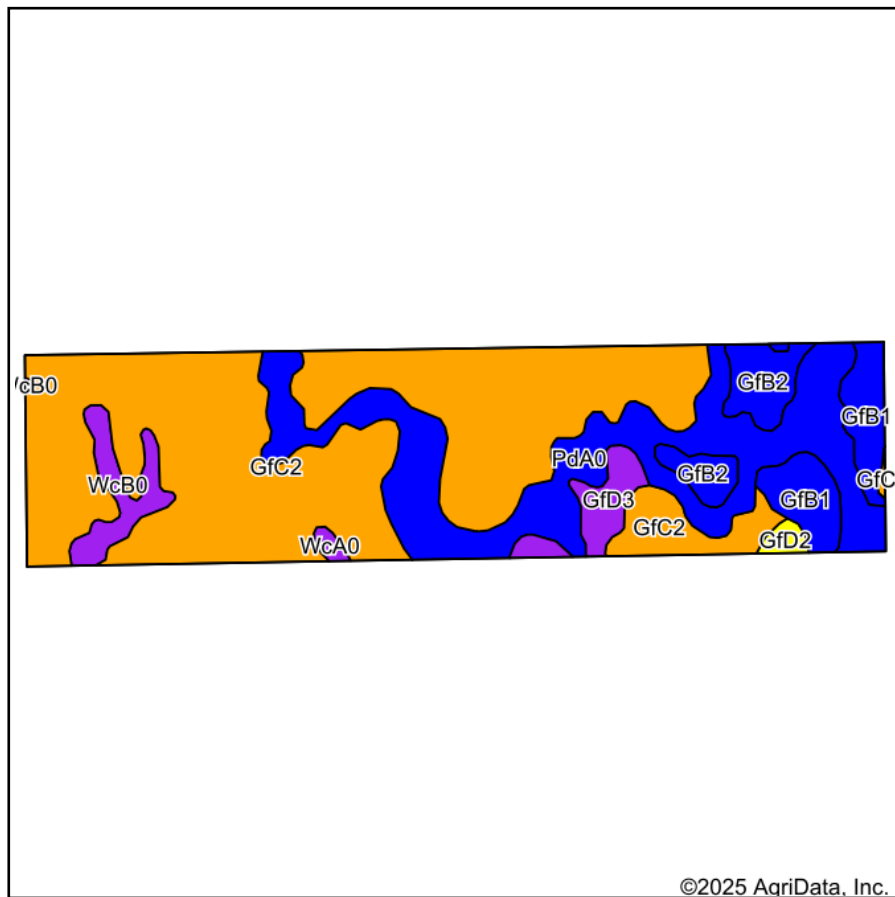
  
WHITETAIL PROPERTIES REAL ESTATE  
HUNTING | RANCH | FARM | TIMBER  
Maps Provided By:  
 **surety**  
CUSTOMIZED ONLINE MAPPING  
© AgriData, Inc. 2023      www.AgriDataInc.com

**18-13N-15E**  
**Sanilac County**  
**Michigan**

7/16/2025

Field borders provided by Farm Service Agency as of 5/21/2008.

# Soils Map



State: **Michigan**  
 County: **Sanilac**  
 Location: **18-13N-15E**  
 Township: **Marion**  
 Acres: **38.07**  
 Date: **7/16/2025**



WHITETAIL PROPERTIES REAL ESTATE  
 HUNTING | RANCH | FARM | TIMBER

Maps Provided By:



© AgriData, Inc. 2023

www.AgriDataInc.com



Soils data provided by USDA and NRCS.

Area Symbol: MI151, Soil Area Version: 21

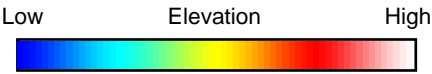
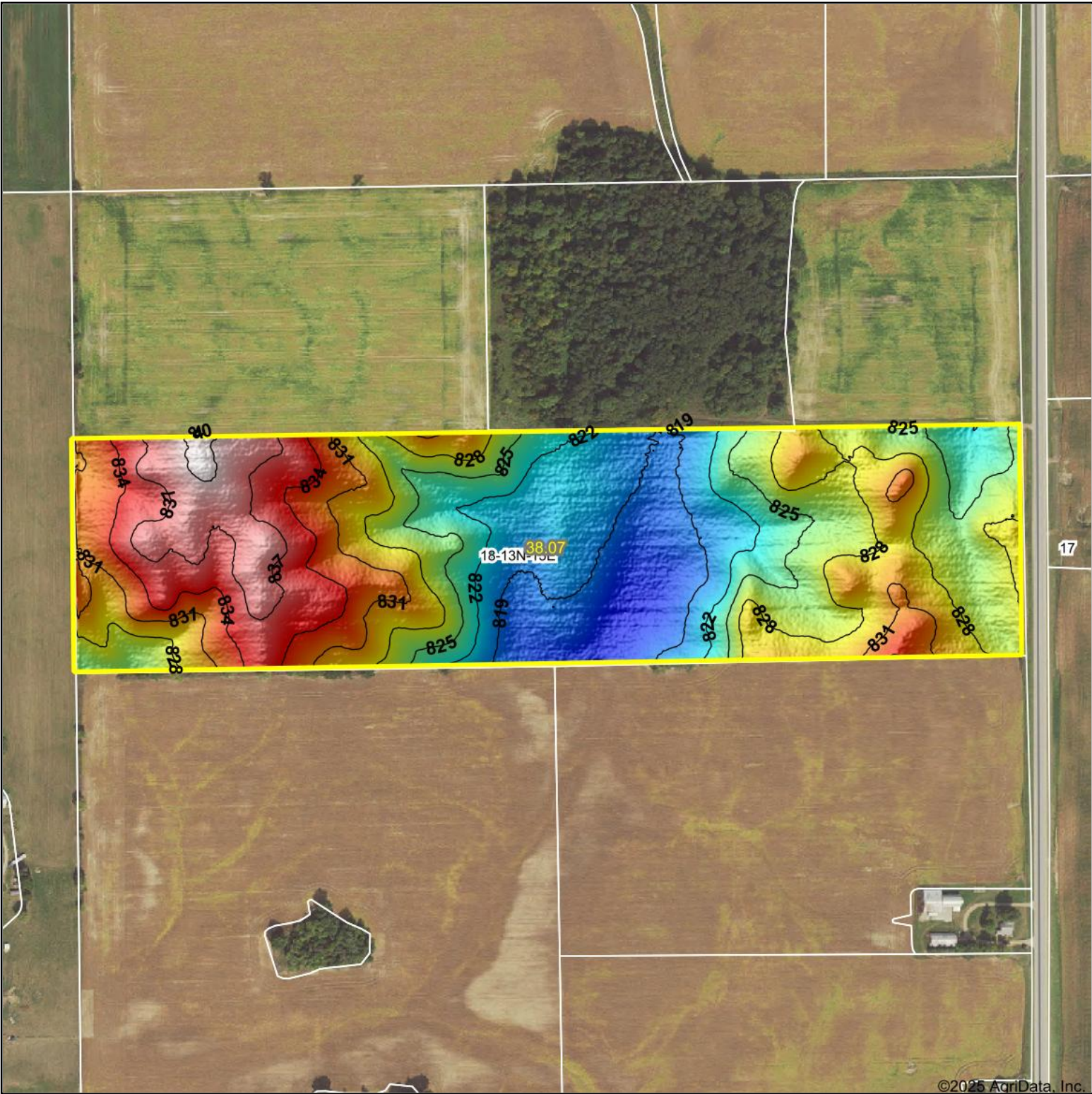
Code	Soil Description	Acres	Percent of field	Non-Irr Class Legend	Non-Irr Class	*n NCCPI Overall	*n NCCPI Corn	*n NCCPI Small Grains	*n NCCPI Soybeans
GfC2	Guelph loam and silt loam, 6 to 12 percent slopes, moderately eroded	22.02	57.8%		IIIe	61	61	57	61
PdA0	Parkhill loam and clay loam, 0 to 2 percent slopes	9.37	24.6%		IIw	76	75	63	76
GfB1	Guelph loam and silt loam, 2 to 6 percent slopes, slightly eroded	2.23	5.9%		Ile	69	66	63	69
GfB2	Guelph loam and silt loam, 2 to 6 percent slopes, moderately eroded	1.69	4.4%		Ile	63	63	59	63
WcB0	Washtenaw loam and silt loam, 2 to 6 percent slopes	1.24	3.3%		Vw	17	17	15	14
GfD3	Guelph loam and silt loam, 12 to 18 percent slopes, severely eroded	1.11	2.9%		Vle	52	52	48	46
GfD2	Guelph loam and silt loam, 12 to 18 percent slopes, moderately eroded	0.25	0.7%		IVe	57	57	53	55
WcA0	Washtenaw loam and silt loam, 0 to 2 percent slopes	0.16	0.4%		Vw	17	17	15	14
Weighted Average					2.82	*n 63.3	*n 62.9	*n 57.1	*n 63

\*n: The aggregation method is "Weighted Average using all components"

Soils data provided by USDA and NRCS.



# Topography Hillshade



WHITETAIL PROPERTIES REAL ESTATE  
HUNTING | RANCH | FARM | TIMBER

Maps Provided By:



© AgriData, Inc. 2023

www.AgriDataInc.com

Field borders provided by Farm Service Agency as of 5/21/2008.

Source: USGS 1 meter dem

Interval(ft): 3

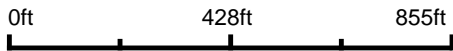
Min: 815.9

Max: 840.6

Range: 24.7

Average: 827.3

Standard Deviation: 6.1 ft



7/16/2025

**18-13N-15E**  
**Sanilac County**  
**Michigan**

Boundary Center: 43.560059, -82.741166