

FSA INFO PACKET



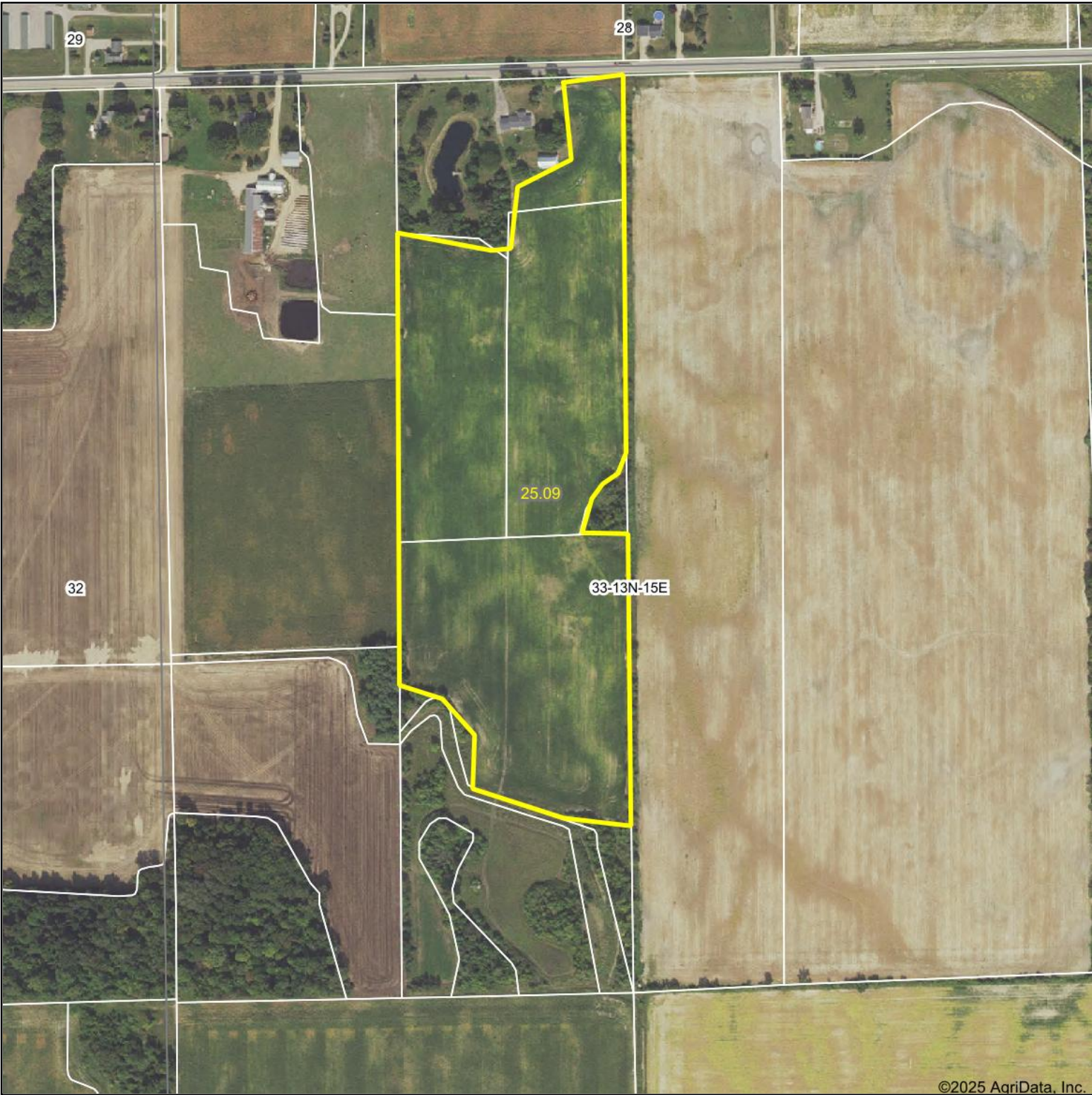
SANILAC CO MI 35 FSA PACKET



A DIVISION OF WHITETAIL
PROPERTIES REAL ESTATE, LLC

RANCHANDFARMAUCTIONS.COM

Aerial Map



©2025 AgriData, Inc.



WHITETAIL PROPERTIES REAL ESTATE
HUNTING | RANCH | FARM | TIMBER

Maps Provided By:



© AgriData, Inc. 2023 www.AgriDataInc.com

Boundary Center: 43.524513, -82.711335

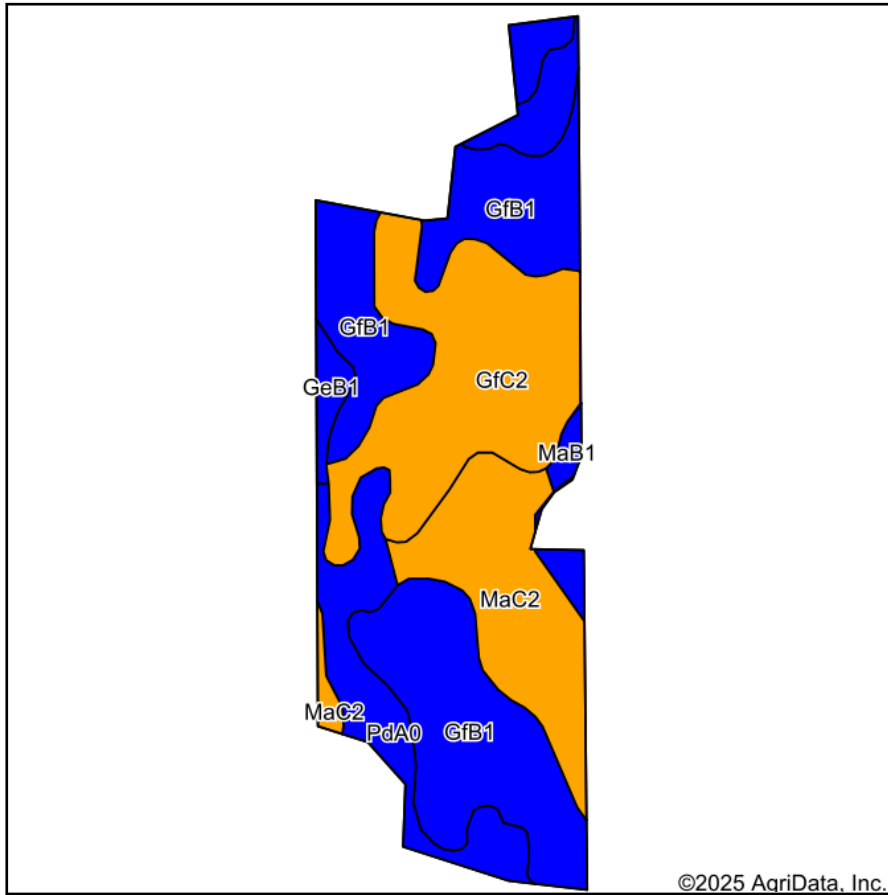
33-13N-15E
Sanilac County
Michigan



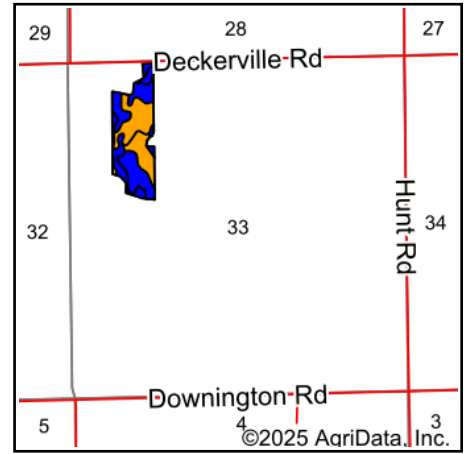
7/16/2025

Field borders provided by Farm Service Agency as of 5/21/2008.

Soils Map



Soils data provided by USDA and NRCS.



State: **Michigan**
 County: **Sanilac**
 Location: **33-13N-15E**
 Township: **Marion**
 Acres: **25.09**
 Date: **7/16/2025**



WHITETAIL PROPERTIES REAL ESTATE
 HUNTING | RANCH | FARM | TIMBER

Maps Provided By:

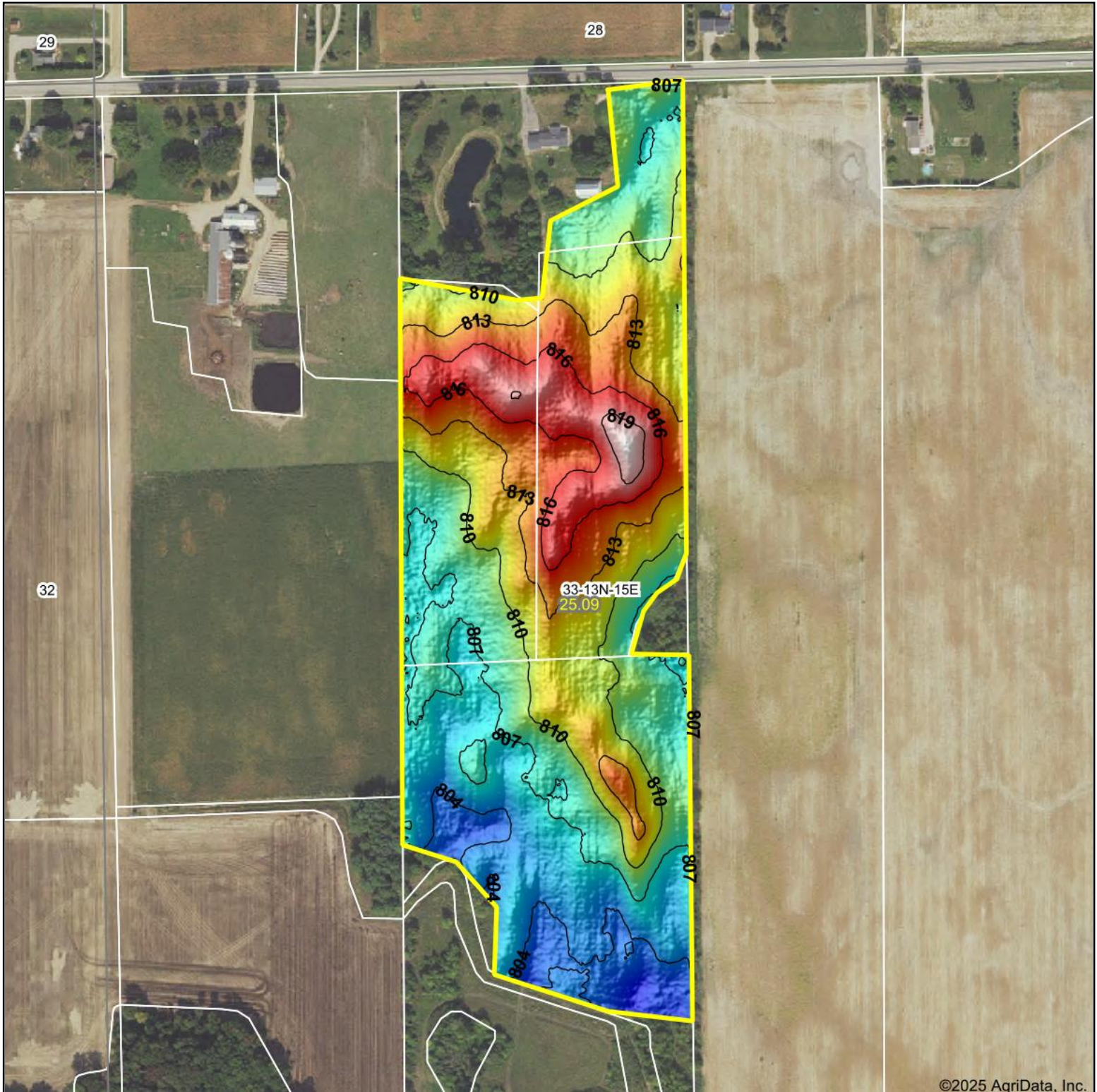


Area Symbol: MI151, Soil Area Version: 21

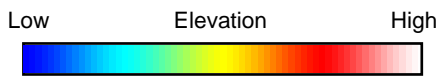
Code	Soil Description	Acres	Percent of field	Non-Irr Class Legend	Non-Irr Class	*n NCCPI Overall	*n NCCPI Corn	*n NCCPI Small Grains	*n NCCPI Soybeans
GfB1	Guelph loam and silt loam, 2 to 6 percent slopes, slightly eroded	9.78	38.9%		Ile	69	66	63	69
GfC2	Guelph loam and silt loam, 6 to 12 percent slopes, moderately eroded	6.44	25.7%		IIle	61	61	57	61
MaC2	McBride fine sandy loam, 6 to 12 percent slopes, moderately eroded	4.38	17.5%		IIle	26	26	20	13
PdA0	Parkhill loam and clay loam, 0 to 2 percent slopes	3.82	15.2%		IIw	76	75	63	76
GeB1	Guelph loam, 2 to 6 percent slopes, slightly eroded	0.45	1.8%		Ile	69	66	63	69
MaB1	McBride fine sandy loam, 2 to 6 percent slopes, slightly eroded	0.22	0.9%		Ile	34	34	29	20
Weighted Average					2.43	*n 60.2	*n 58.8	*n 53.7	*n 57.8

*n: The aggregation method is "Weighted Average using all components"

Topography Hillshade



©2025 AgriData, Inc.



Source: USGS 1 meter dem

Interval(ft): 3

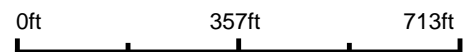
Min: 801.7

Max: 821.0

Range: 19.3

Average: 809.9

Standard Deviation: 4.1 ft



7/16/2025

33-13N-15E
Sanilac County
Michigan

Boundary Center: 43.524513, -82.711335



WHITETAIL PROPERTIES REAL ESTATE
HUNTING | RANCH | FARM | TIMBER

Maps Provided By:



© AgriData, Inc. 2023

www.AgriDataInc.com

Field borders provided by Farm Service Agency as of 5/21/2008.