

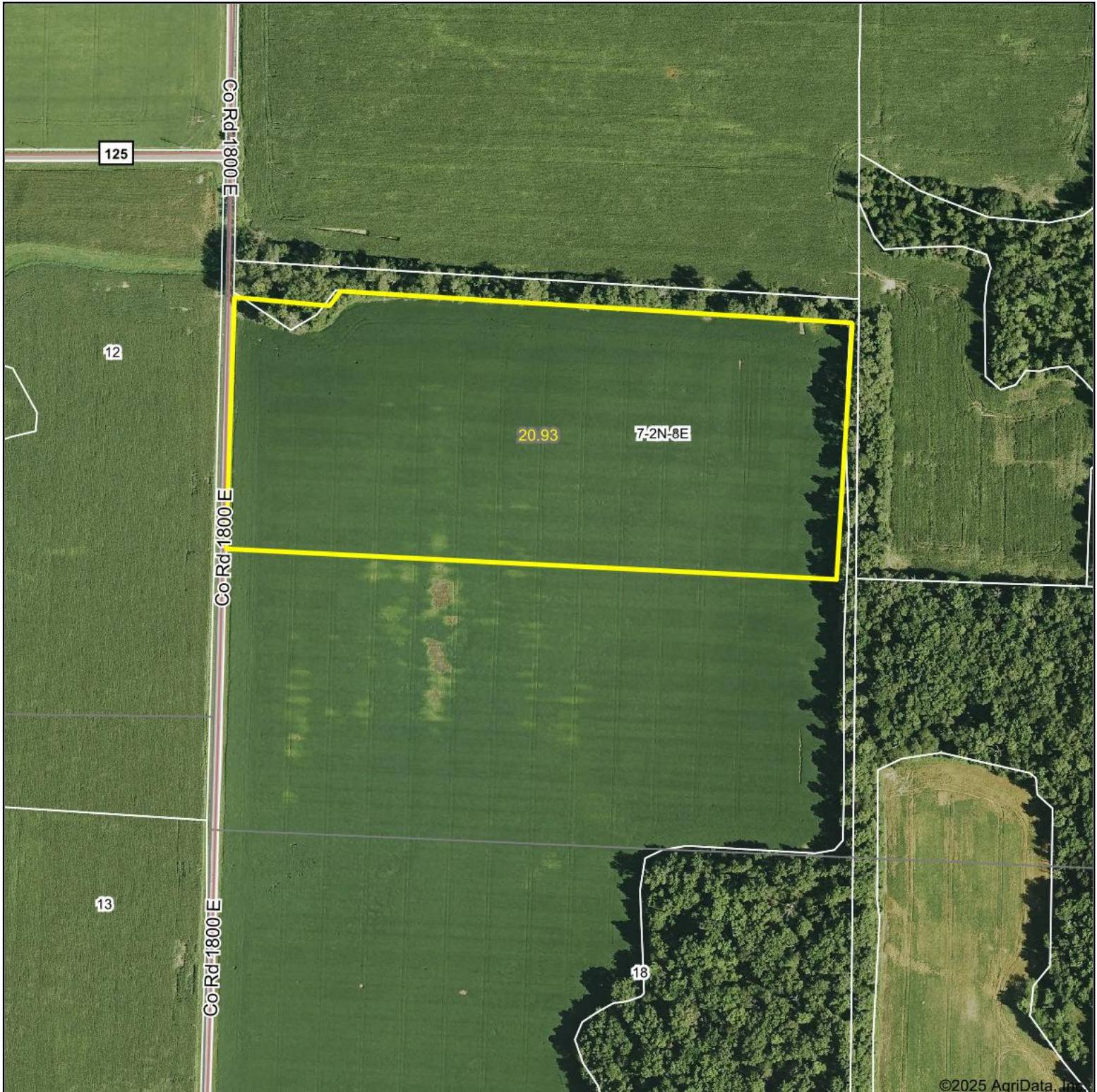
# FSA INFO PACKET



A DIVISION OF WHITETAIL  
PROPERTIES REAL ESTATE, LLC

[RANCHANDFARMAUCTIONS.COM](http://RANCHANDFARMAUCTIONS.COM)





©2025 AgriData, Inc.



WHITETAIL PROPERTIES REAL ESTATE

HUNTING | RANCH | FARM | TIMBER

Maps Provided By:



© AgriData, Inc. 2023

www.AgriDataInc.com

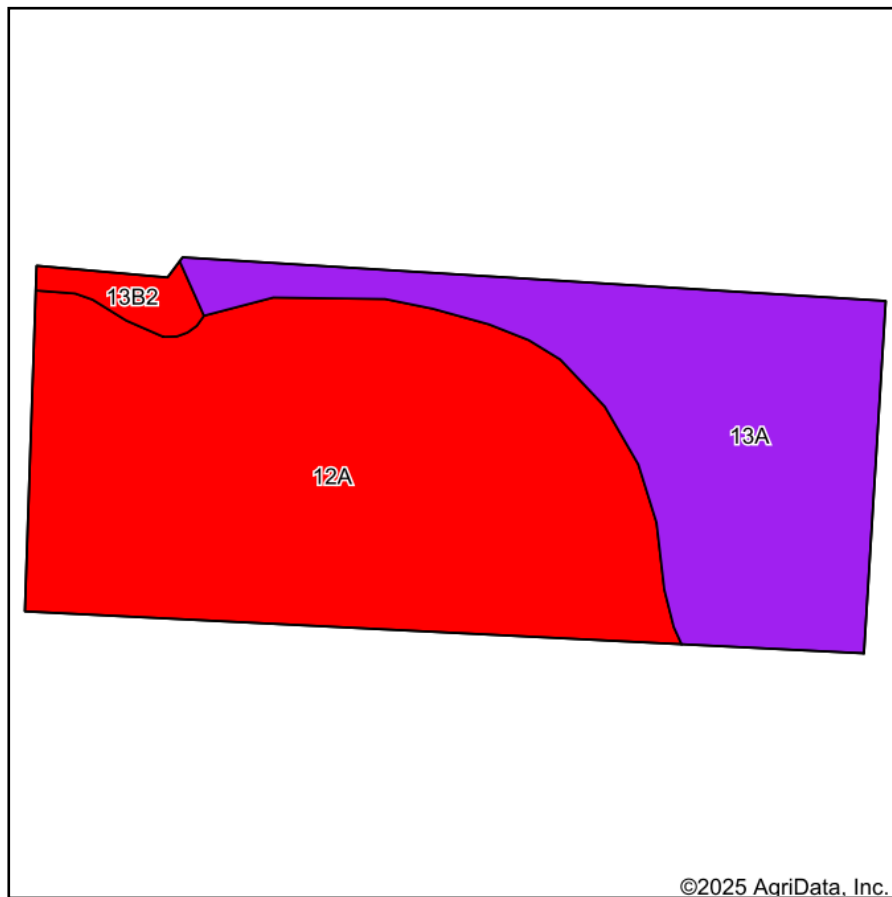
Boundary Center: 38.619176, -88.361308

0ft 373ft 746ft

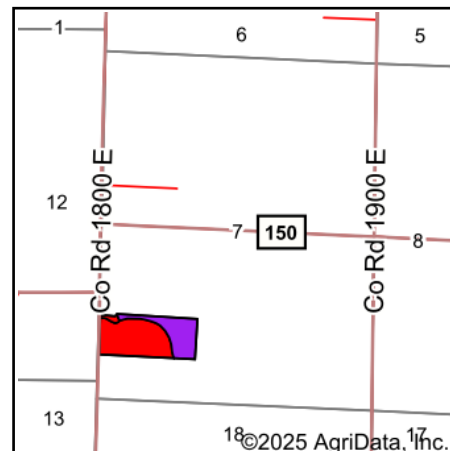
**7-2N-8E**  
**Clay County**  
**Illinois**



7/16/2025



Soils data provided by USDA and NRCS.



State: **Illinois**  
 County: **Clay**  
 Location: **7-2N-8E**  
 Township: **Clay City**  
 Acres: **20.93**  
 Date: **7/16/2025**



WHITETAIL PROPERTIES REAL ESTATE  
 HUNTING | RANCH | FARM | TIMBER

Maps Provided By:



© AgriData, Inc. 2023

www.AgriDataInc.com



Area Symbol: IL025, Soil Area Version: 19

Code	Soil Description	Acres	Percent of field	Il. State Productivity Index Legend	*Subsoil rooting a	*Corn Bu/A	*Soybeans Bu/A	*Wheat Bu/A	*Crop productivity index for optimum management
12A	Wynoose silt loam, 0 to 2 percent slopes	13.10	62.6%		FAV	128	42	51	97
13A	Bluford silt loam, 0 to 2 percent slopes	7.36	35.2%		FAV	136	44	55	101
**13B2	Bluford silt loam, 2 to 5 percent slopes, eroded	0.47	2.2%		FAV	**129	**42	**52	**96
Weighted Average						130.8	42.7	52.4	98.4

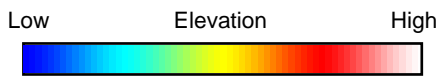
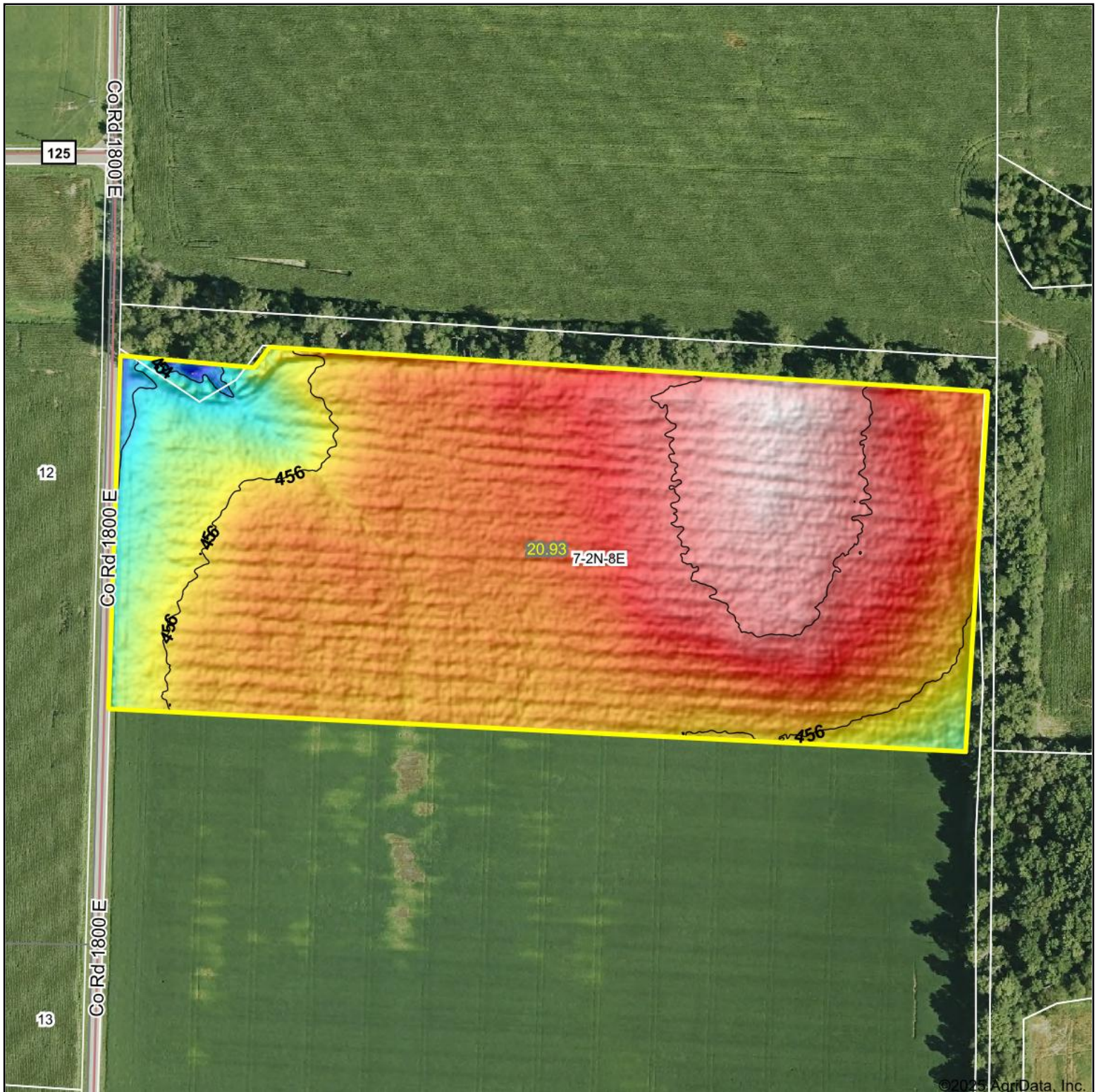
**Table: Optimum Crop Productivity Ratings for Illinois Soil EFOTG are sourced from Bulletin 811 calculated Map Unit Base Yield Indices, and adjusted (Adj) for slope, erosion, and surface texture.** Publication Date: 01-28-2025

Crop yields and productivity (B811 EFOTG) are maintained at the following USDA web site: 2023 Illinois Soil Productivity and Yield Indices:  
<https://efotg.sc.egov.usda.gov/#/state/IL/documents/section=2&folder=52809>

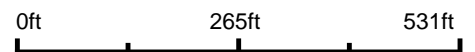
\* The flood/pond factor has been removed for B811 indexes and yields.

\*\* Base indexes from Bulletin 811 adjusted for slope, erosion, and surface texture according to the Il. Soils EFOTG





Source: USGS 1 meter dem  
 Interval(ft): 2  
 Min: 452.6  
 Max: 459.0  
 Range: 6.4  
 Average: 456.8  
 Standard Deviation: 1.02 ft



**7-2N-8E**  
**Clay County**  
**Illinois**

Boundary Center: 38.619176, -88.361308



WHITETAIL PROPERTIES REAL ESTATE  
 HUNTING | RANCH | FARM | TIMBER

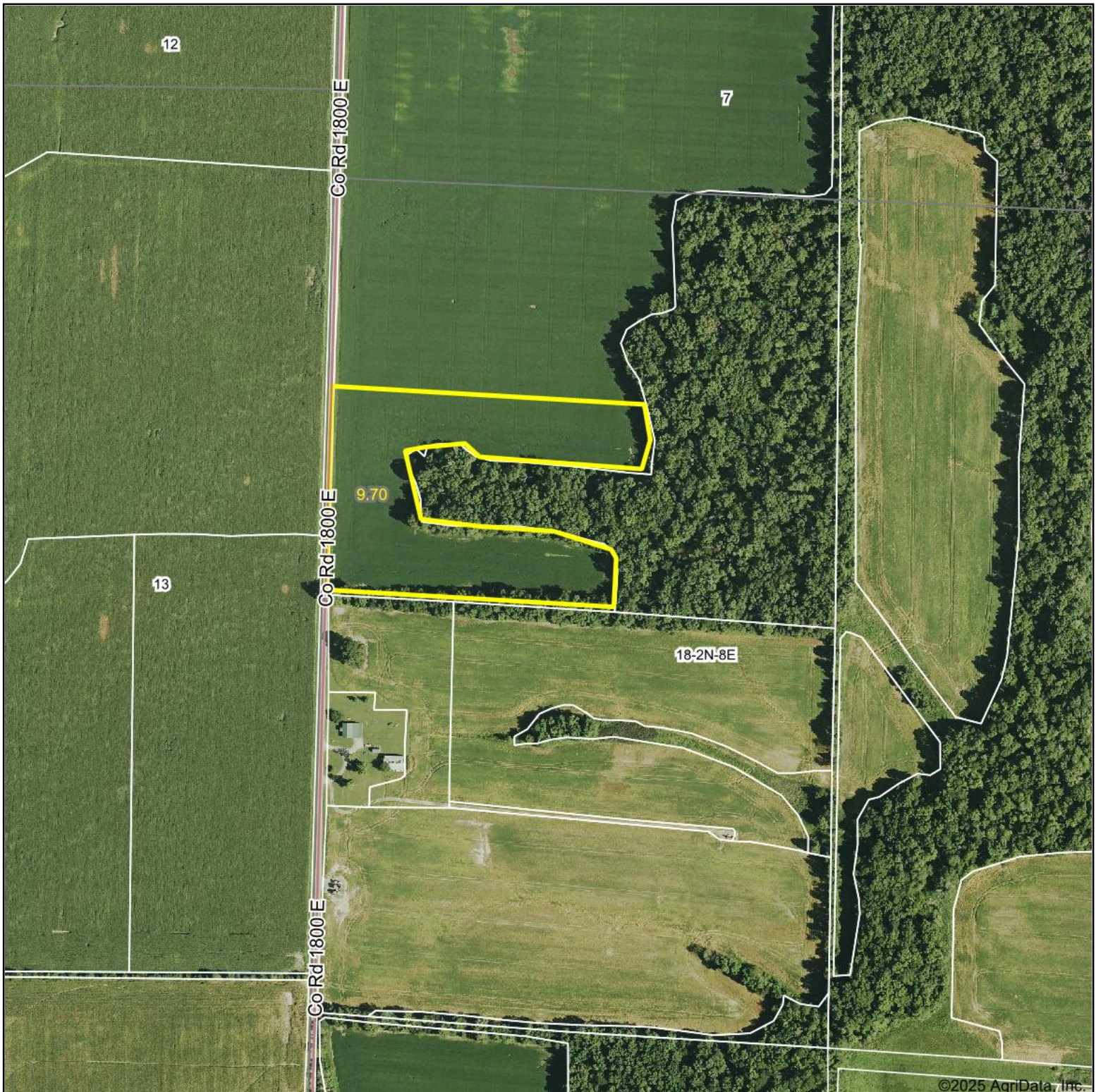
Maps Provided By:



© AgriData, Inc. 2023 www.AgriDataInc.com

Field borders provided by Farm Service Agency as of 5/21/2008.





Boundary Center: 38.613901, -88.362321

0ft 473ft 946ft



WHITETAIL PROPERTIES REAL ESTATE

HUNTING | RANCH | FARM | TIMBER

Maps Provided By:



© AgriData, Inc. 2023

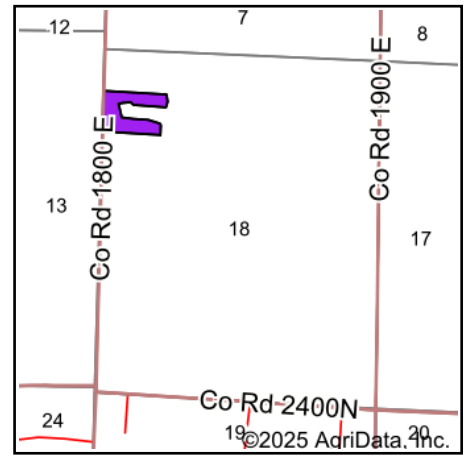
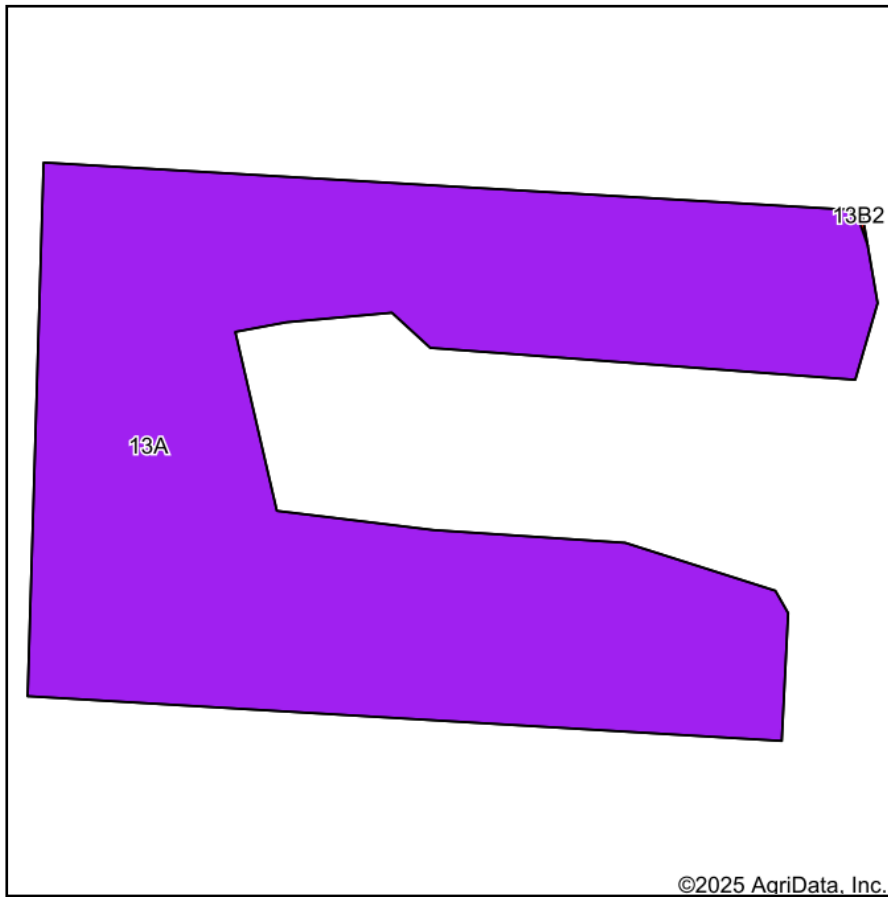
www.AgriDataInc.com

**18-2N-8E**  
**Clay County**  
**Illinois**



7/16/2025





State: **Illinois**  
 County: **Clay**  
 Location: **18-2N-8E**  
 Township: **Clay City**  
 Acres: **9.7**  
 Date: **7/16/2025**



WHITETAIL PROPERTIES REAL ESTATE  
 HUNTING | RANCH | FARM | TIMBER

Maps Provided By:



Area Symbol: IL025, Soil Area Version: 19

Code	Soil Description	Acres	Percent of field	Il. State Productivity Index Legend	*Subsoil rooting <sup>a</sup>	*Corn Bu/A	*Soybeans Bu/A	*Wheat Bu/A	*Crop productivity index for optimum management
13A	Bluford silt loam, 0 to 2 percent slopes	9.70	100.0%		FAV	136	44	55	101
Weighted Average						136	44	55	101

**Table: Optimum Crop Productivity Ratings for Illinois Soil EFOTG are sourced from Bulletin 811 calculated Map Unit Base Yield Indices, and adjusted (Adj) for slope, erosion, and surface texture.** Publication Date: 01-28-2025

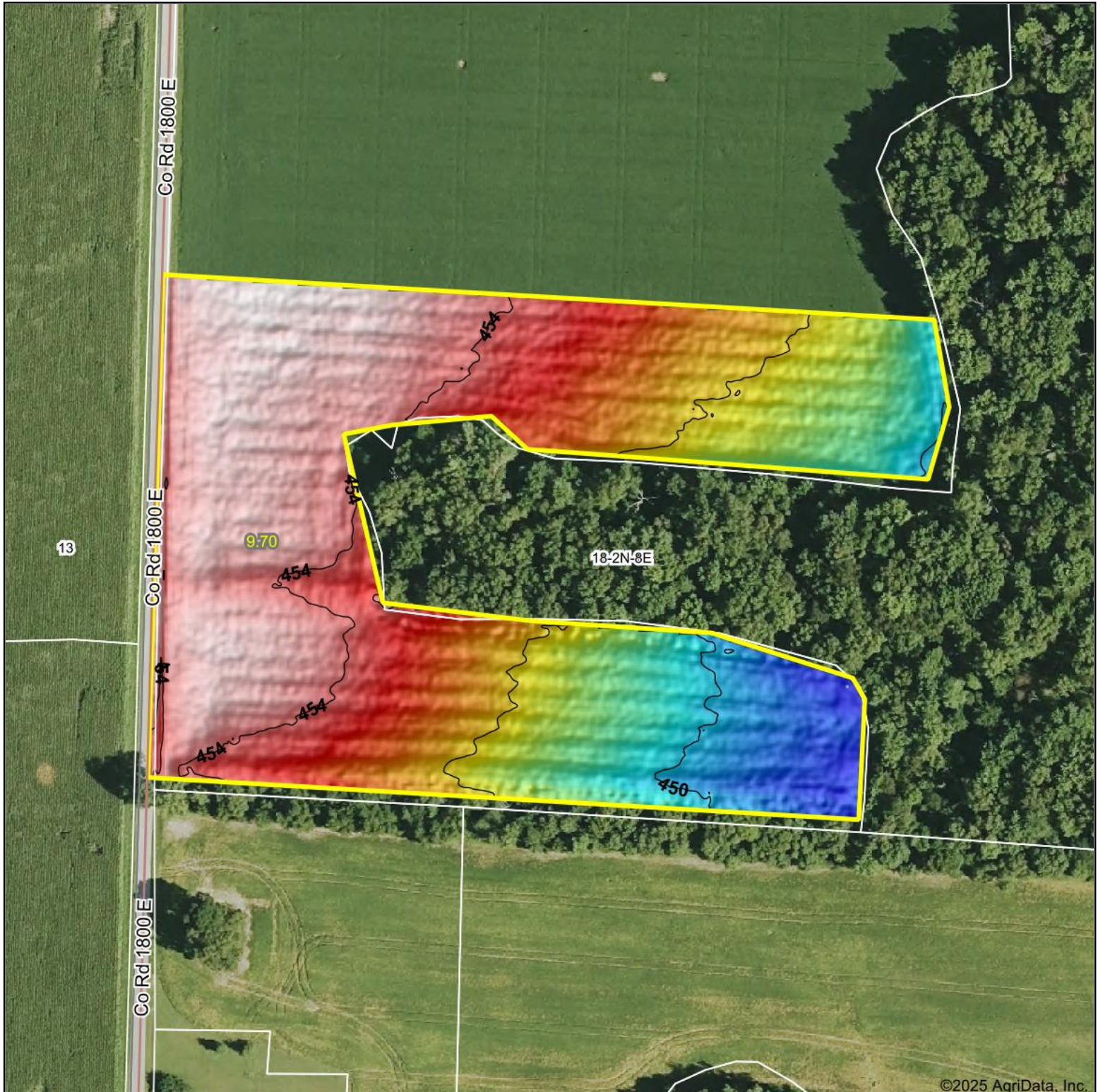
Crop yields and productivity (B811 EFOTG) are maintained at the following USDA web site: 2023 Illinois Soil Productivity and Yield Indices:

<https://efotg.sc.egov.usda.gov/#/state/IL/documents/section=2&folder=52809>

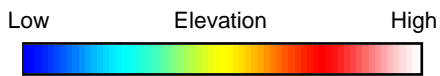
\* The flood/pond factor has been removed for B811 indexes and yields.

\*\* Base indexes from Bulletin 811 adjusted for slope, erosion, and surface texture according to the Il. Soils EFOTG

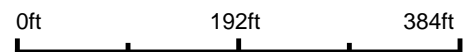
# Topography Hillshade



©2025 AgriData, Inc.



Source: USGS 1 meter dem  
Interval(ft): 2  
Min: 448.8  
Max: 455.0  
Range: 6.2  
Average: 452.8  
Standard Deviation: 1.74 ft



**18-2N-8E**  
**Clay County**  
**Illinois**

Boundary Center: 38.613901, -88.362321



WHITETAIL PROPERTIES REAL ESTATE  
HUNTING | RANCH | FARM | TIMBER

Maps Provided By:

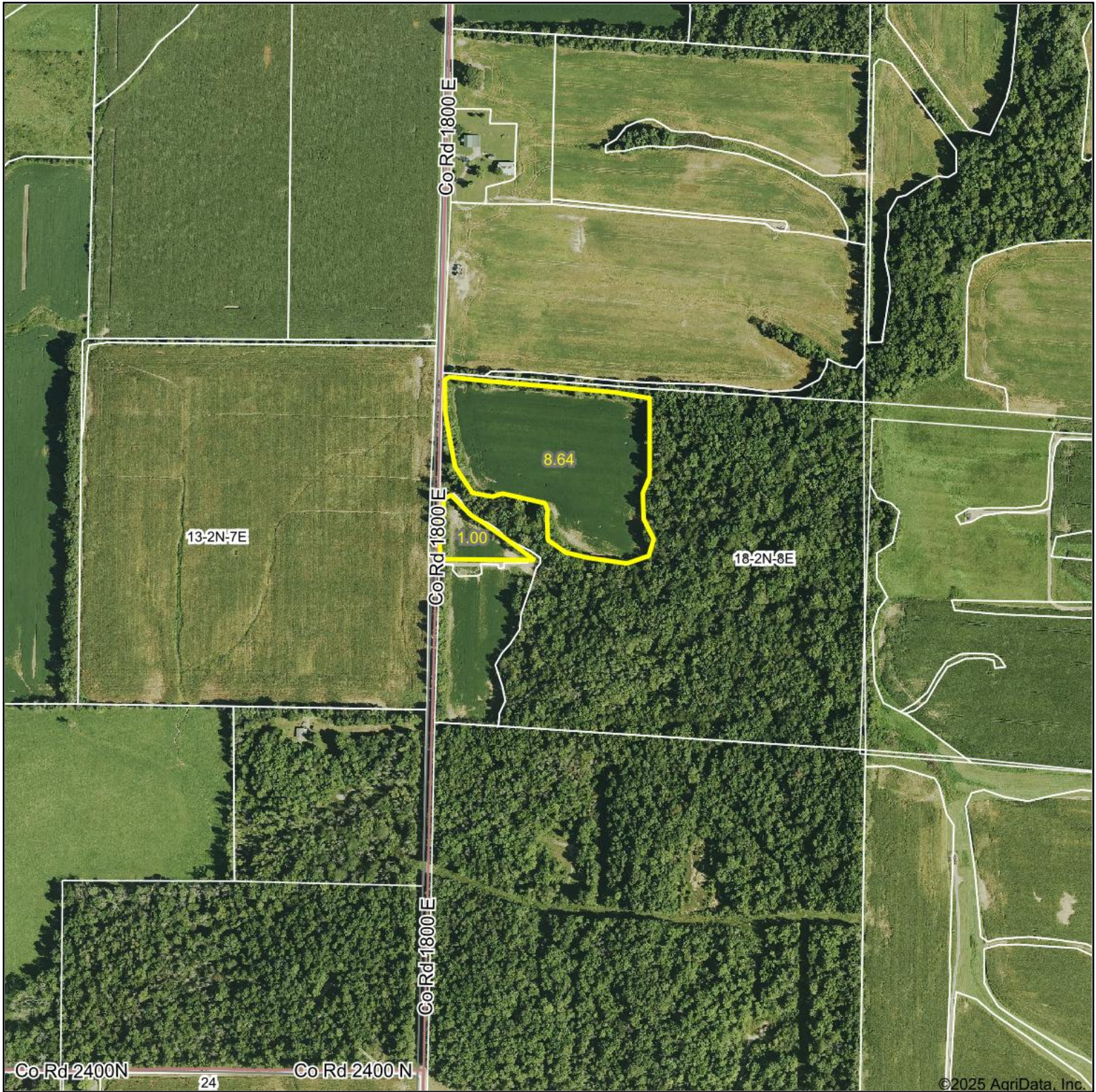


© AgriData, Inc. 2023

www.AgriDataInc.com

Field borders provided by Farm Service Agency as of 5/21/2008.





Boundary Center: 38.608596, -88.362701

0ft 574ft 1149ft



**18-2N-8E**  
**Clay County**  
**Illinois**



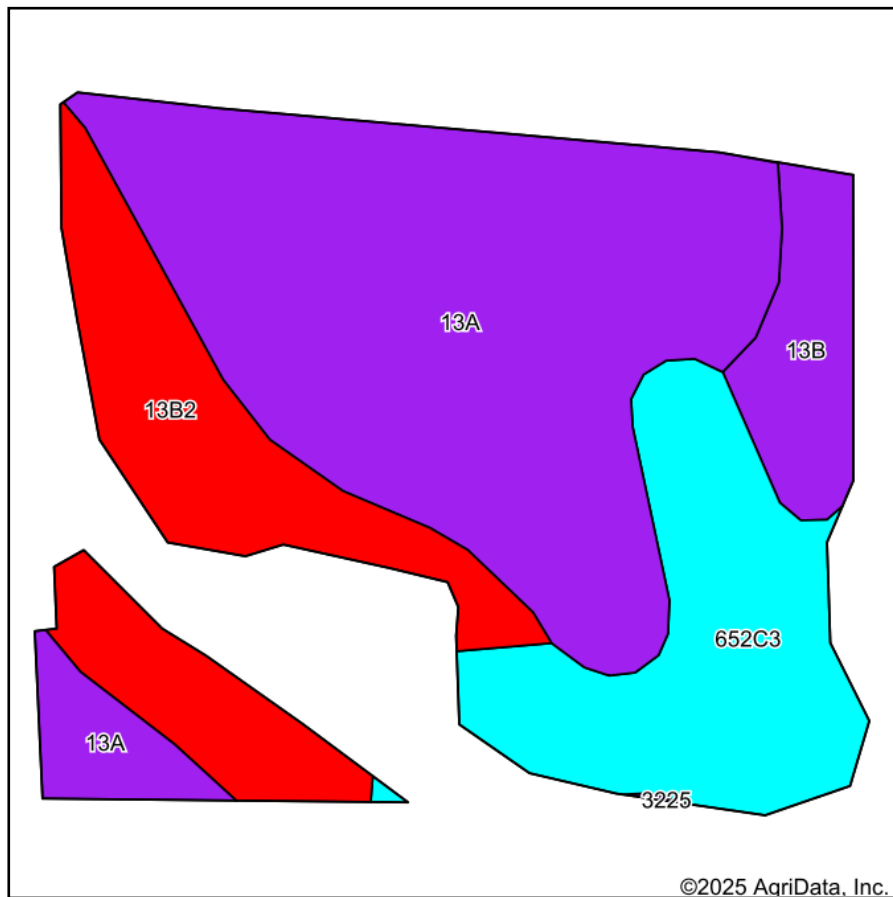
Maps Provided By:  
**surety**  
CUSTOMIZED ONLINE MAPPING  
© AgriData, Inc. 2023 www.AgriDataInc.com

7/16/2025

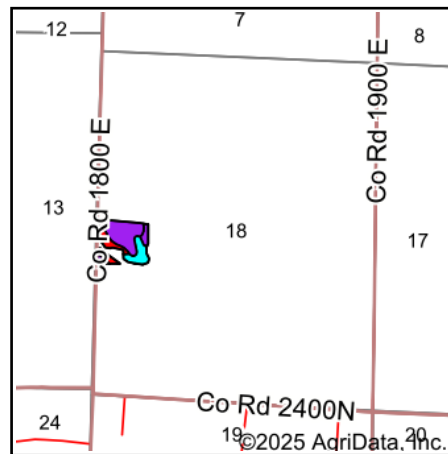


# Tract 3

# Soils Map



Soils data provided by USDA and NRCS.



State: **Illinois**  
 County: **Clay**  
 Location: **18-2N-8E**  
 Township: **Clay City**  
 Acres: **9.64**  
 Date: **7/16/2025**



WHITETAIL PROPERTIES REAL ESTATE  
 HUNTING | RANCH | FARM | TIMBER

Maps Provided By:



Area Symbol: IL025, Soil Area Version: 19

Code	Soil Description	Acres	Percent of field	Il. State Productivity Index Legend	*Subsoil rooting a	*Corn Bu/A	*Soybeans Bu/A	*Wheat Bu/A	*Crop productivity index for optimum management
13A	Bluford silt loam, 0 to 2 percent slopes	5.06	52.6%		FAV	136	44	55	101
**13B2	Bluford silt loam, 2 to 5 percent slopes, eroded	1.98	20.5%		FAV	**129	**42	**52	**96
**652C3	Passport silty clay loam, 5 to 10 percent slopes, severely eroded	1.95	20.2%		FAV	**107	**36	**46	**81
**13B	Bluford silt loam, 2 to 5 percent slopes	0.65	6.7%		FAV	**135	**44	**54	**100
Weighted Average						128.6	42	52.5	95.9

**Table: Optimum Crop Productivity Ratings for Illinois Soil EFOTG are sourced from Bulletin 811 calculated Map Unit Base Yield Indices, and adjusted (Adj) for slope, erosion, and surface texture.** Publication Date: 01-28-2025

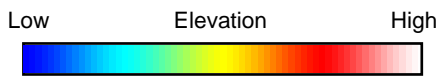
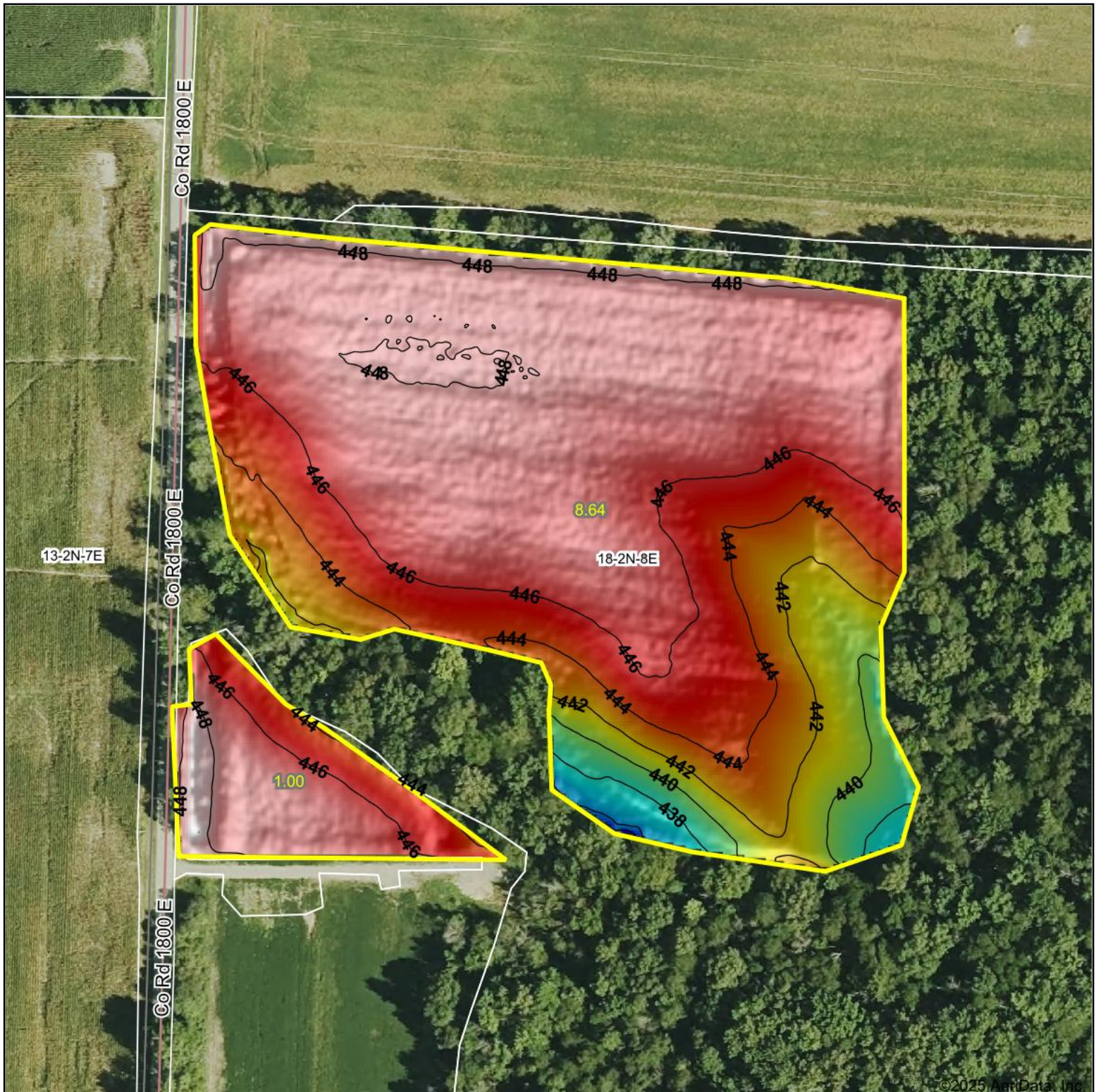
Crop yields and productivity (B811 EFOTG) are maintained at the following USDA web site: 2023 Illinois Soil Productivity and Yield Indices: <https://efotg.sc.egov.usda.gov/#/state/IL/documents/section=2&folder=52809>

\* The flood/pond factor has been removed for B811 indexes and yields.

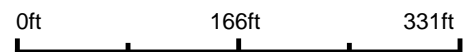
\*\* Base indexes from Bulletin 811 adjusted for slope, erosion, and surface texture according to the Il. Soils EFOTG



# Topography Hillshade



Source: USGS 1 meter dem  
Interval(ft): 2  
Min: 433.6  
Max: 449.2  
Range: 15.6  
Average: 445.6  
Standard Deviation: 2.66 ft



**18-2N-8E**  
**Clay County**  
**Illinois**

Boundary Center: 38.608596, -88.362701



WHITETAIL PROPERTIES REAL ESTATE  
HUNTING | RANCH | FARM | TIMBER

Maps Provided By:



© AgriData, Inc. 2023

www.AgrIDataInc.com

Field borders provided by Farm Service Agency as of 5/21/2008.





United States  
Department of  
Agriculture

## Clay County, Illinois



### Legend

- Tract Boundary
- Non-Cropland
- Cropland
- CRP

### Wetland Determination Identifiers

- Restricted Use
- Limited Restrictions
- Exempt from Conservation Compliance Provisions

Corn =YC GR  
Soybeans =COM GR  
Wheat = SRW GR

All Crops NI - Unless Otherwise Noted

2025 Program Year

Map Created October 08, 2024

Farm **9228**  
Tract **12161**

IL025\_T12161

Tract Cropland Total: 20.92 acres

United States Department of Agriculture (USDA) Farm Service Agency (FSA) maps are for FSA Program administration only. This map does not represent a legal survey or reflect actual ownership; rather it depicts the information provided directly from the producer and/or National Agricultural Imagery Program (NAIP) imagery. The producer accepts the data 'as is' and assumes all risks associated with its use. USDA-FSA assumes no responsibility for actual or consequential damage incurred as a result of any user's reliance on this data outside FSA Programs. Wetland identifiers do not represent the size, shape, or specific determination of the area. Refer to your original determination (CPA-026 and attached maps) for exact boundaries and determinations or contact USDA Natural Resources Conservation Service (NRCS).





United States  
Department of  
Agriculture

## Clay County, Illinois



### Legend

- Tract Boundary
- Non-Cropland
- Cropland
- CRP

### Wetland Determination Identifiers

- Restricted Use
- Limited Restrictions
- Exempt from Conservation Compliance Provisions

Corn =YC GR  
Soybeans =COM GR  
Wheat = SRW GR

All Crops NI - Unless Otherwise Noted

2025 Program Year

Map Created October 08, 2024

Farm **9228**  
Tract **12162**

Tract Cropland Total: 10.26 acres

IL025\_T12162

United States Department of Agriculture (USDA) Farm Service Agency (FSA) maps are for FSA Program administration only. This map does not represent a legal survey or reflect actual ownership; rather it depicts the information provided directly from the producer and/or National Agricultural Imagery Program (NAIP) imagery. The producer accepts the data 'as is' and assumes all risks associated with its use. USDA-FSA assumes no responsibility for actual or consequential damage incurred as a result of any user's reliance on this data outside FSA Programs. Wetland identifiers do not represent the size, shape, or specific determination of the area. Refer to your original determination (CPA-026 and attached maps) for exact boundaries and determinations or contact USDA Natural Resources Conservation Service (NRCS).





United States  
Department of  
Agriculture

## Clay County, Illinois



### Legend

- Tract Boundary
- Non-Cropland
- Cropland
- CRP

### Wetland Determination Identifiers

- Restricted Use
- Limited Restrictions
- Exempt from Conservation Compliance Provisions

Corn =YC GR  
Soybeans =COM GR  
Wheat = SRW GR  
All Crops NI - Unless Otherwise Noted

2025 Program Year  
Map Created October 08, 2024

Farm **9228**  
Tract **12165**

Tract Cropland Total: 9.64 acres

IL025\_T12165

United States Department of Agriculture (USDA) Farm Service Agency (FSA) maps are for FSA Program administration only. This map does not represent a legal survey or reflect actual ownership; rather it depicts the information provided directly from the producer and/or National Agricultural Imagery Program (NAIP) imagery. The producer accepts the data 'as is' and assumes all risks associated with its use. USDA-FSA assumes no responsibility for actual or consequential damage incurred as a result of any user's reliance on this data outside FSA Programs. Wetland identifiers do not represent the size, shape, or specific determination of the area. Refer to your original determination (CPA-026 and attached maps) for exact boundaries and determinations or contact USDA Natural Resources Conservation Service (NRCS).



ILLINOIS  
CLAY

Form: FSA-156EZ

See Page 3 for non-discriminatory Statements.



United States Department of Agriculture  
Farm Service Agency

### Abbreviated 156 Farm Record

FARM : 9228

Prepared : 7/21/25 9:31 AM CST

Crop Year : 2025

Operator Name : RICKEY D GILL  
CRP Contract Number(s) : None  
Recon ID : 17-025-2019-85  
Transferred From : None  
ARCPLC G//F Eligibility : Eligible

#### Farm Land Data

Farmland	Cropland	DCP Cropland	WBP	EWP	WRP	GRP	Sugarcane	Farm Status	Number Of Tracts
69.80	40.82	40.82	0.00	0.00	0.00	0.00	0.0	Active	3
State Conservation	Other Conservation	Effective DCP Cropland	Double Cropped			CRP	MPL	DCP Ag.Rel. Activity	SOD
0.00	0.00	40.82	2.36			0.00	0.00	0.00	0.00

#### Crop Election Choice

ARC Individual	ARC County	Price Loss Coverage
None	CORN, SOYBN	None

#### DCP Crop Data

Crop Name	Base Acres	CCC-505 CRP Reduction Acres	PLC Yield	HIP
Corn	8.37	0.00	114	
Soybeans	25.09	0.00	36	
<b>TOTAL</b>	<b>33.46</b>	<b>0.00</b>		

#### NOTES

Tract Number : 12161

Description : S7 T2N R8E  
FSA Physical Location : ILLINOIS/CLAY  
ANSI Physical Location : ILLINOIS/CLAY  
BIA Unit Range Number :  
HEL Status : NHEL: No agricultural commodity planted on undetermined fields  
Wetland Status : Tract contains a wetland or farmed wetland  
WL Violations : None  
Owners : JENNIFER M JOHNSON, SANDY J BARNHART, CLAY IL  
Other Producers : None  
Recon ID : 17-025-2019-83

#### Tract Land Data

Farm Land	Cropland	DCP Cropland	WBP	EWP	WRP	GRP	Sugarcane
23.54	20.92	20.92	0.00	0.00	0.00	0.00	0.0





**Abbreviated 156 Farm Record**

**Tract 12161 Continued ...**

State Conservation	Other Conservation	Effective DCP Cropland	Double Cropped	CRP	MPL	DCP Ag. Rel Activity	SOD
0.00	0.00	20.92	1.20	0.00	0.00	0.00	0.00

**DCP Crop Data**

Crop Name	Base Acres	CCC-505 CRP Reduction Acres	PLC Yield
Corn	4.29	0.00	114
Soybeans	12.85	0.00	36
<b>TOTAL</b>	<b>17.14</b>	<b>0.00</b>	

**NOTES**

**Tract Number : 12162**

**Description :** S18 T2N R8E  
**FSA Physical Location :** ILLINOIS/CLAY  
**ANSI Physical Location :** ILLINOIS/CLAY  
**BIA Unit Range Number :**  
**HEL Status :** NHEL: No agricultural commodity planted on undetermined fields  
**Wetland Status :** Tract contains a wetland or farmed wetland  
**WL Violations :** None  
**Owners :** JENNIFER M JOHNSON, SANDY J BARNHART, CLAY IL  
**Other Producers :** None  
**Recon ID :** 17-025-2019-83

**Tract Land Data**

Farm Land	Cropland	DCP Cropland	WBP	EWP	WRP	GRP	Sugarcane
22.74	10.26	10.26	0.00	0.00	0.00	0.00	0.0
State Conservation	Other Conservation	Effective DCP Cropland	Double Cropped	CRP	MPL	DCP Ag. Rel Activity	SOD
0.00	0.00	10.26	0.59	0.00	0.00	0.00	0.00

**DCP Crop Data**

Crop Name	Base Acres	CCC-505 CRP Reduction Acres	PLC Yield
Corn	2.10	0.00	114
Soybeans	6.30	0.00	36
<b>TOTAL</b>	<b>8.40</b>	<b>0.00</b>	

**NOTES**





**Abbreviated 156 Farm Record**

**Tract Number** : 12165

**Description** : S18 T2N R8E

**FSA Physical Location** : ILLINOIS/CLAY

**ANSI Physical Location** : ILLINOIS/CLAY

**BIA Unit Range Number** :

**HEL Status** : HEL field on tract.Conservation system being actively applied

**Wetland Status** : Tract contains a wetland or farmed wetland

**WL Violations** : None

**Owners** : JENNIFER M JOHNSON, SANDY J BARNHART, CLAY IL

**Other Producers** : None

**Recon ID** : 17-025-2019-84

**Tract Land Data**

Farm Land	Cropland	DCP Cropland	WBP	EWP	WRP	GRP	Sugarcane
23.52	9.64	9.64	0.00	0.00	0.00	0.00	0.0
State Conservation	Other Conservation	Effective DCP Cropland	Double Cropped	CRP	MPL	DCP Ag. Rel Activity	SOD
0.00	0.00	9.64	0.57	0.00	0.00	0.00	0.00

**DCP Crop Data**

Crop Name	Base Acres	CCC-505 CRP Reduction Acres	PLC Yield
Corn	1.98	0.00	114
Soybeans	5.94	0.00	36
<b>TOTAL</b>	<b>7.92</b>	<b>0.00</b>	

**NOTES**

In accordance with Federal civil rights law and U.S. Department of Agriculture (USDA) civil rights regulations and policies, the USDA, its Agencies, offices, and employees, and institutions participating in or administering USDA programs are prohibited from discriminating based on race, color, national origin, religion, sex, disability, age, marital status, family/parental status, income derived from a public assistance program, political beliefs, or reprisal or retaliation for prior civil rights activity, in any program or activity conducted or funded by USDA (not all bases apply to all programs). Remedies and complaint filing deadlines vary by program or incident.

Persons with disabilities who require alternative means of communication for program information (e.g., Braille, large print, audiotape, American Sign Language, etc.) should contact the responsible Agency or USDA's TARGET Center at (202) 720-2600 (voice and TTY) or contact USDA through the Federal Relay Service at (800) 877-8339. Additionally, program information may be made available in languages other than English.

To file a program discrimination complaint, complete the USDA Program Discrimination Complaint Form, AD-3027, found online at [How to File a Program Discrimination Complaint](#) and at any USDA office or write a letter addressed to USDA and provide in the letter all of the information requested in the form. To request a copy of the complaint form, call (866) 632-9992. Submit your completed form or letter to USDA by: (1) Mail: U.S. Department of Agriculture Office of the Assistant Secretary for Civil Rights, 1400 Independence Avenue, SW Washington, D.C. 20250-9410; (2) Fax: (202) 690-7442; or (3) Email: [program.intake@usda.gov](mailto:program.intake@usda.gov). USDA is an equal opportunity provider, employer, and lender.