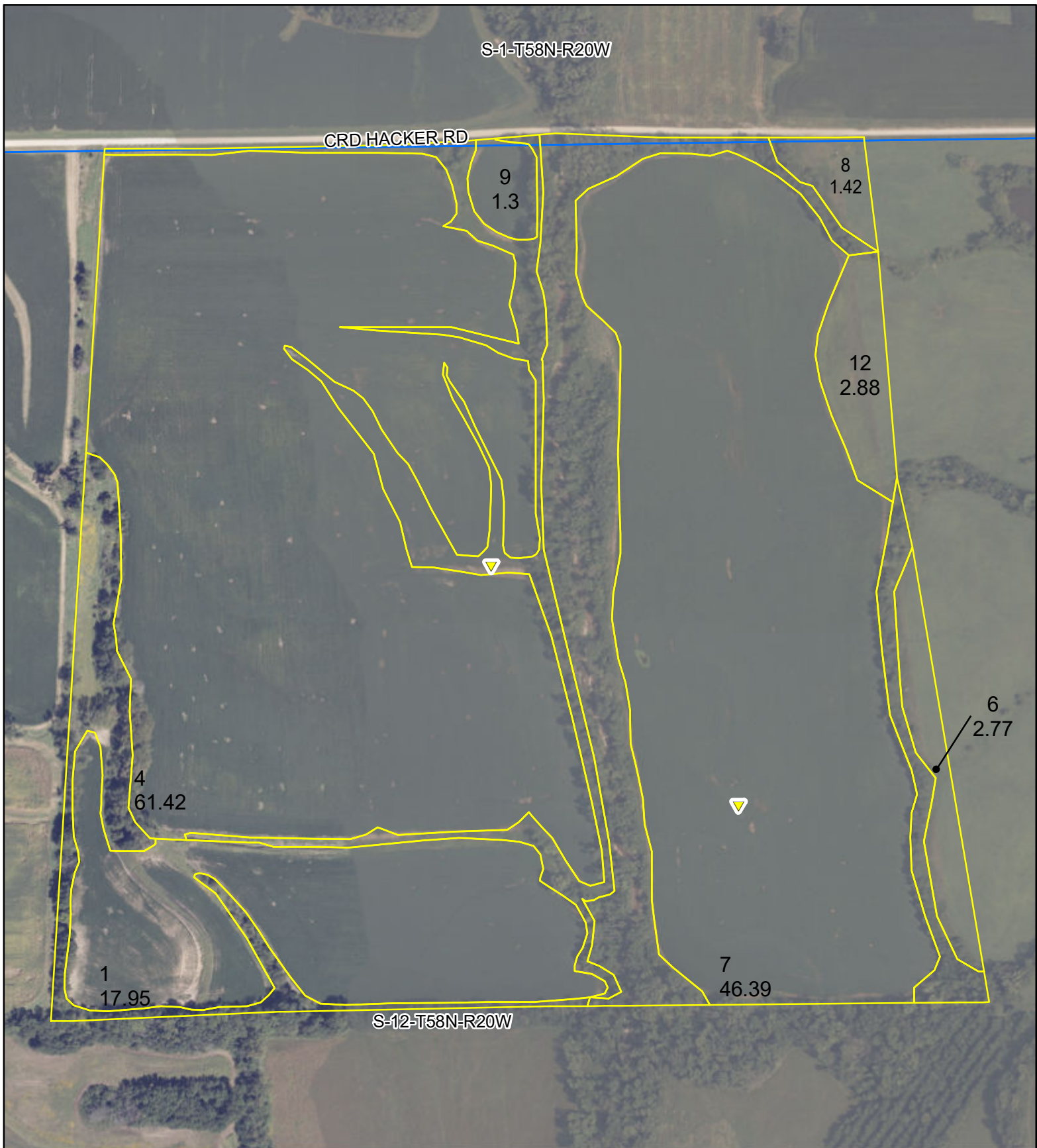


# FSA INFO PACKET



A DIVISION OF WHITETAIL  
PROPERTIES REAL ESTATE, LLC

[RANCHANDFARMAUCTIONS.COM](http://RANCHANDFARMAUCTIONS.COM)



**All Measurements are  
For FSA Programs Only**

**Wetland Determination Identifiers**

- Restricted Use
- ▼ Limited Restrictions
- Exempt from Conservation Compliance Provisions

**Disclaimer:** Wetland identifiers do not represent the size, shape or specific determination of the area. Refer to your original determination (CPA-026 and attached maps) for exact wetland boundaries and determinations, or contact NRCS.

**Linn Co. FSA**

C=Corn-YEL-GR SB=Soybean-COM-GR  
 SRW=Wheat-SRW-GR Milo=Sorgh-GRS-GR  
 FG=grass or mixfg-fg CCC=covrc-cereals  
 ALF=alfalfa-fg GZ=grass or mixfg-gz  
 F=failed PP=prevent plant  
 DC=double crop LS=left standing  
 All fields are NI non-irrigated\*  
 \*Unless notated on Map

**1:4,730**

**Program Year: 2026**

Created: 9/2/2025

Flown: 9/4/2024

- clu
- crp
- plss

**Farm 6114  
Tract 5071**







## Abbreviated 156 Farm Record

Operator Name : GIK, LLC  
CRP Contract Number(s) : None  
Recon ID : 29-115-2022-43  
Transferred From : None  
ARCPLC G//F Eligibility : Eligible

## Farm Land Data

Farmland	Cropland	DCP Cropland	WBP	EWP	WRP	GRP	Sugarcane	Farm Status	Number Of Tracts
161.60	134.13	134.13	0.00	0.00	0.00	0.00	0.0	Active	1
State Conservation	Other Conservation	Effective DCP Cropland	Double Cropped			CRP	MPL	DCP Ag.Rel. Activity	SOD
0.00	0.00	134.13	0.00			0.00	0.00	0.00	0.00

## Crop Election Choice

ARC Individual	ARC County	Price Loss Coverage
None	WHEAT, CORN, SORGH, SOYBN	None

## DCP Crop Data

Crop Name	Base Acres	CCC-505 CRP Reduction Acres	PLC Yield	HIP
Wheat	6.55	0.00	40	
Soybeans	42.31	0.00	24	
<b>TOTAL</b>	<b>48.86</b>	<b>0.00</b>		

## NOTES

Tract Number : 5071

Description :  
FSA Physical Location : MISSOURI/LINN  
ANSI Physical Location : MISSOURI/LINN  
BIA Unit Range Number :  
CRP Contract Number(s) : None  
HEL Status : HEL determinations not completed for all fields on the tract  
Wetland Status : Tract contains a wetland or farmed wetland  
WL Violations : None  
Owners : GIK, LLC  
Other Producers : MEDICINE CREEK FARMS LLC  
Recon ID : 29-115-2022-41

## Tract Land Data

Farm Land	Cropland	DCP Cropland	WBP	EWP	WRP	GRP	Sugarcane
161.60	134.13	134.13	0.00	0.00	0.00	0.00	0.0

MISSOURI  
LINN  
Form: FSA-156EZ



United States Department of Agriculture  
Farm Service Agency

Abbreviated 156 Farm Record

FARM : 6114  
Prepared : 12/29/25 12:14 PM CST  
Crop Year : 2026

Tract 5071 Continued ...

State Conservation	Other Conservation	Effective DCP Cropland	Double Cropped	CRP	MPL	DCP Ag. Rel Activity	SOD
0.00	0.00	134.13	0.00	0.00	0.00	0.00	0.00

DCP Crop Data

Crop Name	Base Acres	CCC-505 CRP Reduction Acres	PLC Yield
Wheat	6.55	0.00	40
Soybeans	42.31	0.00	24
<b>TOTAL</b>	<b>48.86</b>	<b>0.00</b>	

NOTES

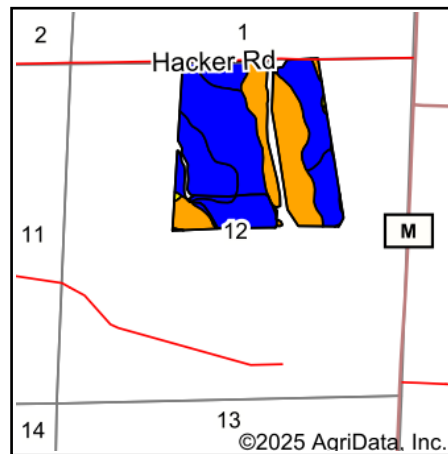
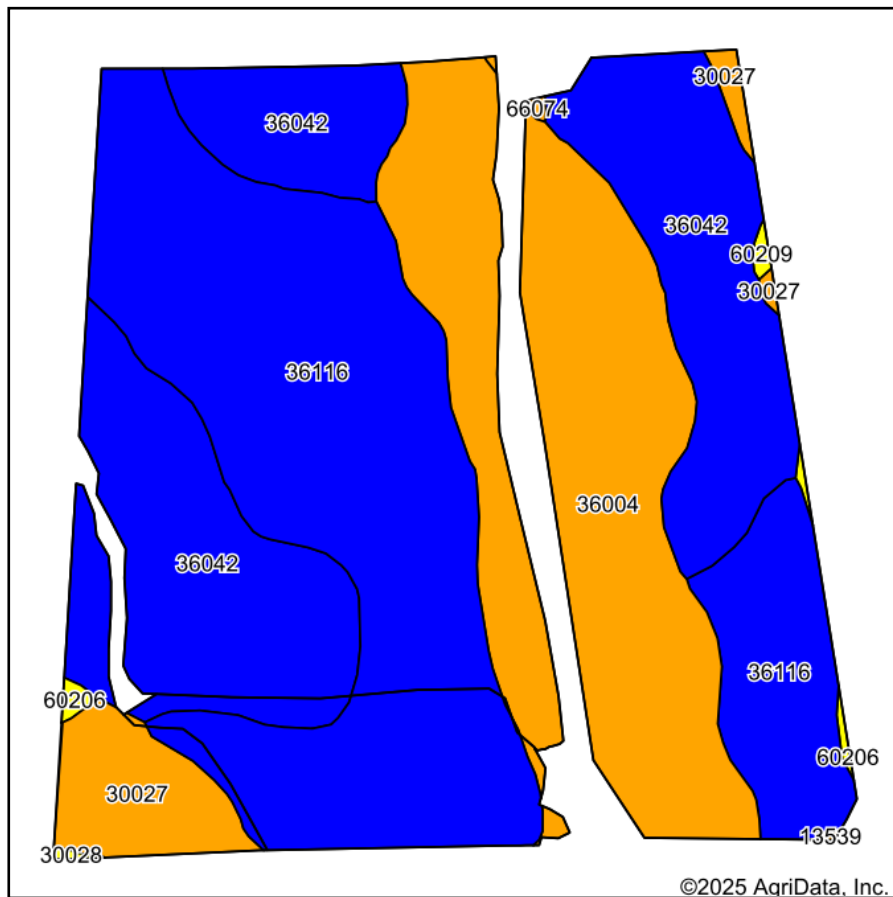
--

In accordance with Federal civil rights law and U.S. Department of Agriculture (USDA) civil rights regulations and policies, the USDA, its Agencies, offices, and employees, and institutions participating in or administering USDA programs are prohibited from discriminating based on race, color, national origin, religion, sex, disability, age, marital status, family/parental status, income derived from a public assistance program, political beliefs, or reprisal or retaliation for prior civil rights activity, in any program or activity conducted or funded by USDA (not all bases apply to all programs). Remedies and complaint filing deadlines vary by program or incident.

Persons with disabilities who require alternative means of communication for program information (e.g., Braille, large print, audiotape, American Sign Language, etc.) should contact the State or Local Agency that administers the program or contact USDA through the Telecommunications Relay Service at 711 (voice and TTY). Additionally, program information may be made available in languages other than English.

To file a program discrimination complaint, complete the USDA Program Discrimination Complaint Form, AD-3027, found online at [How to File a Program Discrimination Complaint](#) and at any USDA office or write a letter addressed to USDA and provide in the letter all of the information requested in the form. To request a copy of the complaint form, call (866) 632-9992. Submit your completed form or letter to USDA by: (1) Mail: U.S. Department of Agriculture Office of the Assistant Secretary for Civil Rights, 1400 Independence Avenue, SW Washington, D.C. 20250-9410; (2) Fax: (202) 690-7442; or (3) Email: [program.intake@usda.gov](mailto:program.intake@usda.gov). USDA is an equal opportunity provider, employer, and lender.

# Soils Map



State: **Missouri**  
 County: **Linn**  
 Location: **12-58N-20W**  
 Township: **Locust Creek**  
 Acres: **143.88**  
 Date: **12/3/2025**



WHITETAIL PROPERTIES REAL ESTATE  
 HUNTING | RANCH | FARM | TIMBER

Maps Provided By:



Area Symbol: MO115, Soil Area Version: 30

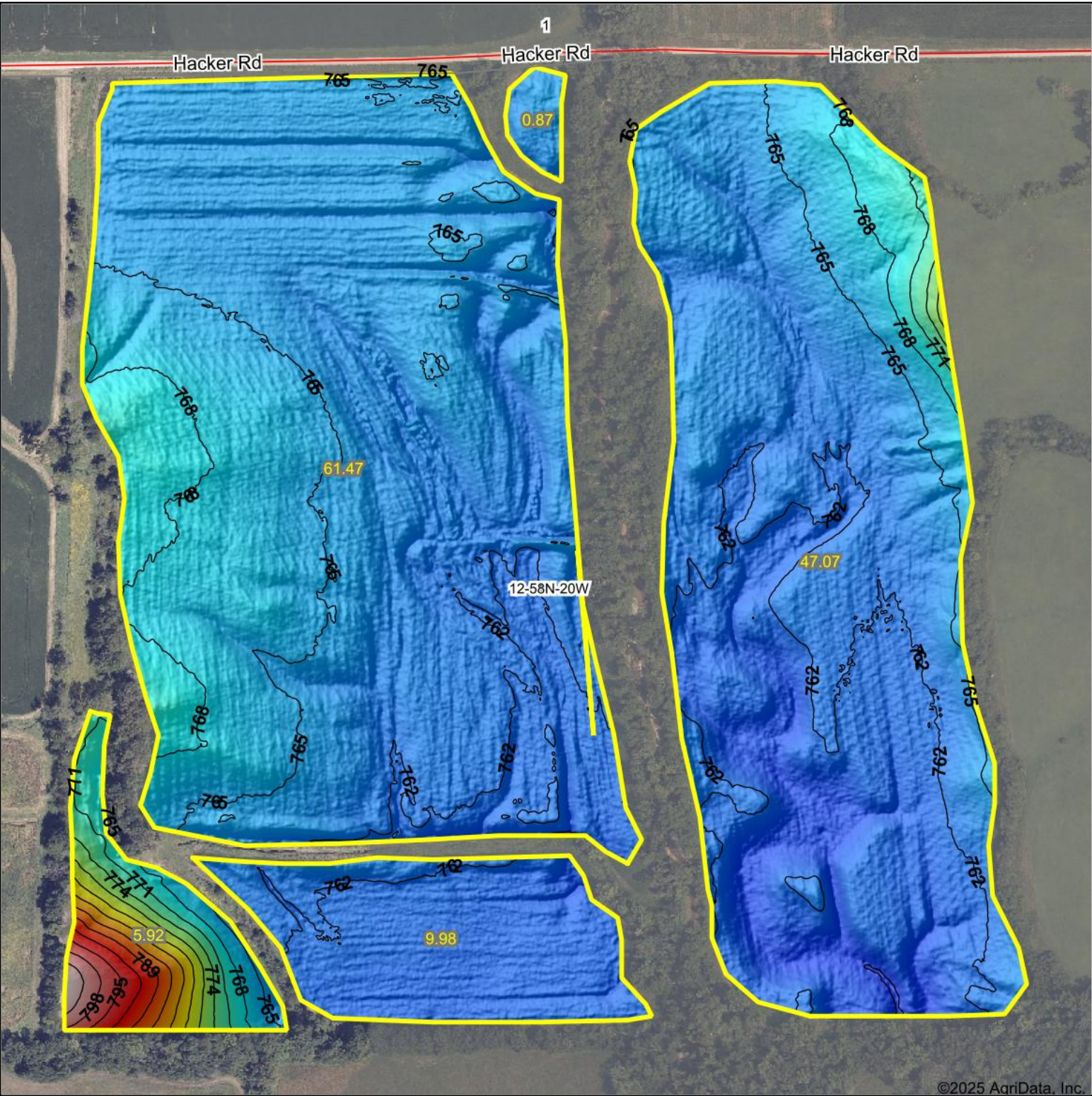
Code	Soil Description	Acres	Percent of field	Non-Irr Class Legend	Non-Irr Class *c	*n NCCPI Overall	*n NCCPI Corn	*n NCCPI Small Grains	*n NCCPI Soybeans
36116	Zook silty clay loam, heavy till, 0 to 2 percent slopes, occasionally flooded	57.32	39.8%		IIw	74	74	61	67
36042	Vesser silt loam, 0 to 2 percent slopes, occasionally flooded	42.05	29.2%		IIw	94	75	39	94
36004	Blackoar silt loam, 0 to 2 percent slopes, frequently flooded	37.25	25.9%		IIIw	86	80	61	85
30027	Armstrong clay loam, 5 to 9 percent slopes, moderately eroded	6.41	4.5%		IIle	60	60	54	41
60206	Purdin clay loam, 14 to 20 percent slopes, eroded	0.46	0.3%		IVe	53	53	49	46
60209	Purdin loam, 9 to 14 percent slopes, eroded	0.18	0.1%		IVe	54	54	53	51
66074	Chequest silty clay loam, 0 to 2 percent slopes, frequently flooded	0.13	0.1%		IIIw	23	10	22	6
30028	Armstrong clay loam, 5 to 9 percent slopes, severely eroded	0.08	0.1%		IVe	56	56	48	38
Weighted Average					2.31	*n 82.2	*n 75.1	*n 54.2	*n 78.2

\*n: The aggregation method is "Weighted Average using all components"

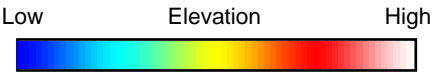
\*c: Using Capabilities Class Dominant Condition Aggregation Method



# Topography Hillshade



©2025 AgriData, Inc.



Source: USGS 1 meter dem

Interval(ft): 3

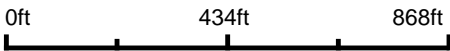
Min: 757.1

Max: 803.9

Range: 46.8

Average: 764.3

Standard Deviation: 4.59 ft



12/26/2025

12-58N-20W

Linn County

Missouri

Boundary Center: 39.866851, -93.084086

  
WHITETAIL PROPERTIES REAL ESTATE  
HUNTING | RANCH | FARM | TIMBER  
Maps Provided By:

 **surety**  
CUSTOMIZED ONLINE MAPPING  
© AgriData, Inc. 2025 www.AgriDataInc.com