

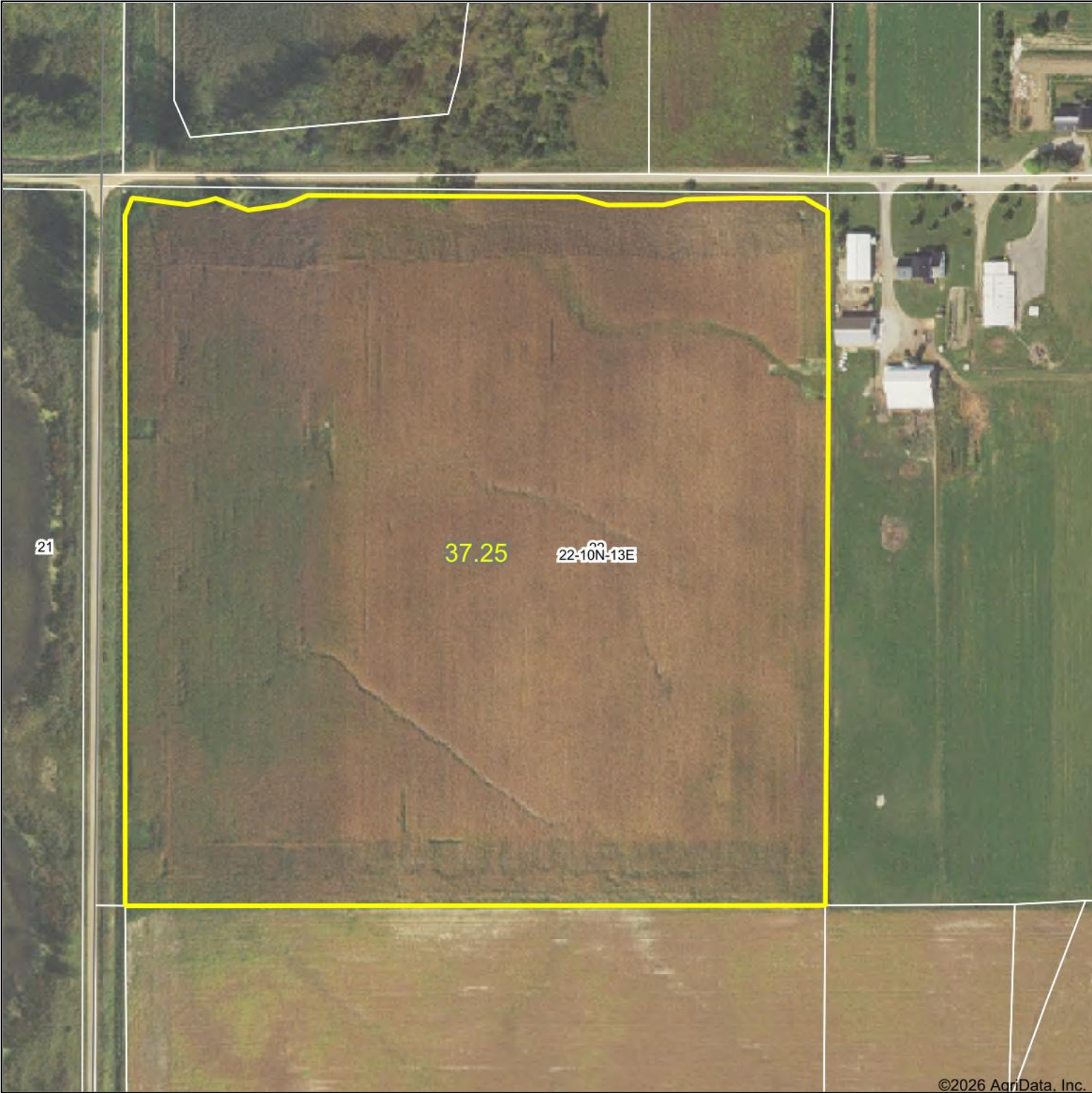
FSA INFO PACKET



A DIVISION OF WHITETAIL
PROPERTIES REAL ESTATE, LLC

RANCHANDFARMAUCTIONS.COM

Aerial Map



©2026 AgriData, Inc.



WHITETAIL PROPERTIES REAL ESTATE
HUNTING | RANCH | FARM | TIMBER

Maps Provided By:
 **surety**[®]
CUSTOMIZED ONLINE MAPPING
© AgriData, Inc. 2025 www.AgriDataInc.com

Boundary Center: 43° 16.579', -82° 56.4352'

22-10N-13E
Sanilac County
Michigan

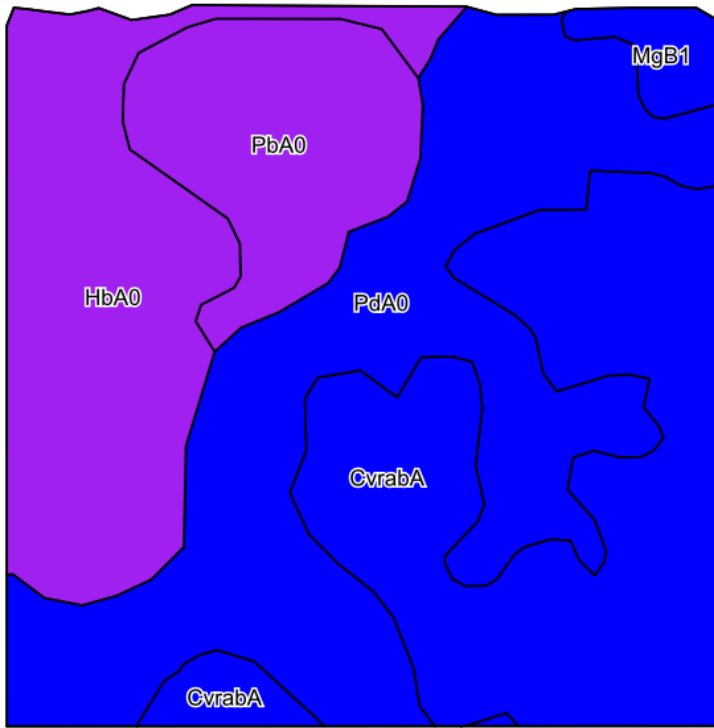
0ft 282ft 564ft



1/15/2026

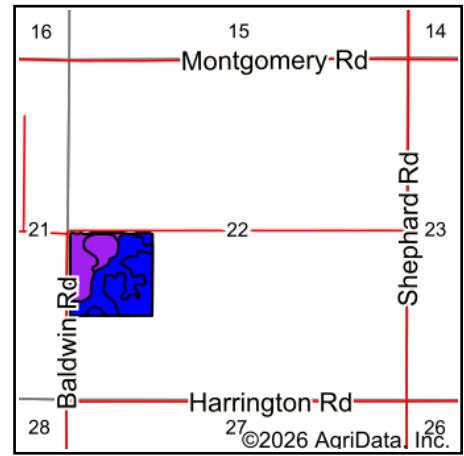
Field borders provided by Farm Service Agency as of 5/21/2008.

Soils Map



©2026 AgriData, Inc.

Soils data provided by USDA and NRCS.



State: **Michigan**
 County: **Sanilac**
 Location: **22-10N-13E**
 Township: **Flynn**
 Acres: **37.25**
 Date: **1/15/2026**



WHITETAIL PROPERTIES REAL ESTATE
 HUNTING | RANCH | FARM | TIMBER

Maps Provided By:



© AgriData, Inc. 2025

www.AgriDataInc.com



Area Symbol: MI151, Soil Area Version: 22

Code	Soil Description	Acres	Percent of field	Non-Irr Class Legend	Non-Irr Class *c	*n NCCPI Overall	*n NCCPI Corn	*n NCCPI Soybeans
PdA0	Parkhill loam and clay loam, 0 to 2 percent slopes	12.78	34.3%		Ilw	76	75	76
CvraB	Conover loam, 0 to 3 percent slopes	11.24	30.2%		Ilw	53	53	45
HbA0	Houghton and Palms mucks, 0 to 2 percent slopes	7.90	21.2%		Vw	18	17	16
PbA0	Palms and Adrian mucks, 0 to 2 percent slopes	4.55	12.2%		Vw	17	15	16
MgB1	Marlette silt loam and loam, 2 to 6 percent slopes, slightly eroded	0.78	2.1%		Ile	74	74	69
Weighted Average					3.00	*n 49.5	*n 48.7	*n 46.4

*n: The aggregation method is "Weighted Average using all components"

*c: Using Capabilities Class Dominant Condition Aggregation Method

Soils data provided by USDA and NRCS.