

# FSA INFO PACKET

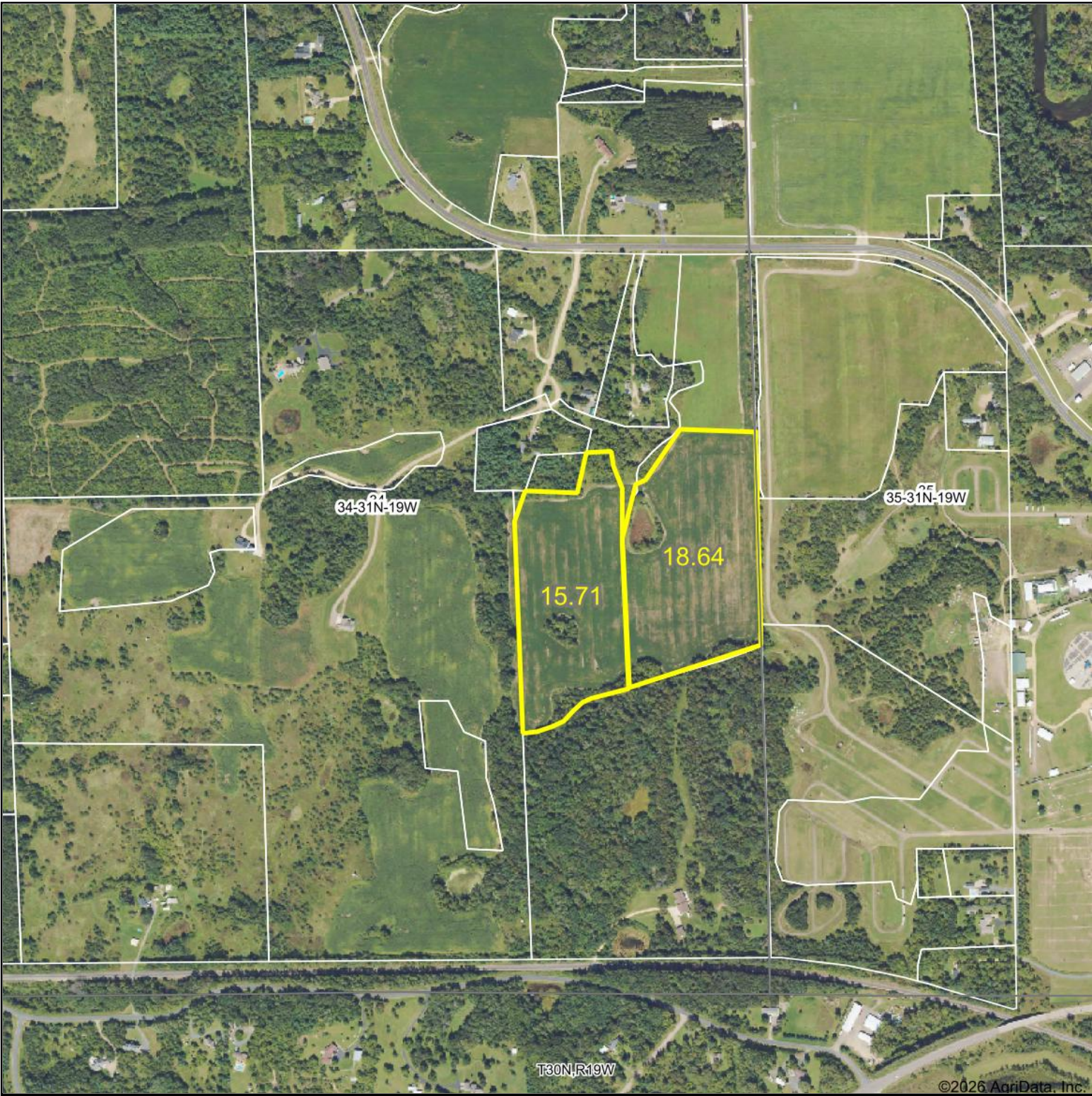


A DIVISION OF WHITETAIL  
PROPERTIES REAL ESTATE, LLC

[RANCHANDFARMAUCTIONS.COM](http://RANCHANDFARMAUCTIONS.COM)



Aerial Map



©2026 AgriData, Inc.



WHITETAIL PROPERTIES REAL ESTATE  
HUNTING | RANCH | FARM | TIMBER

Maps Provided By:  
 **surety**<sup>®</sup>  
CUSTOMIZED ONLINE MAPPING  
© AgriData, Inc. 2025      www.AgriDataInc.com

Boundary Center: 45° 7.7483', -92° 41.7183'

**34-31N-19W**  
**St. Croix County**  
**Wisconsin**

0ft      820ft      1641ft

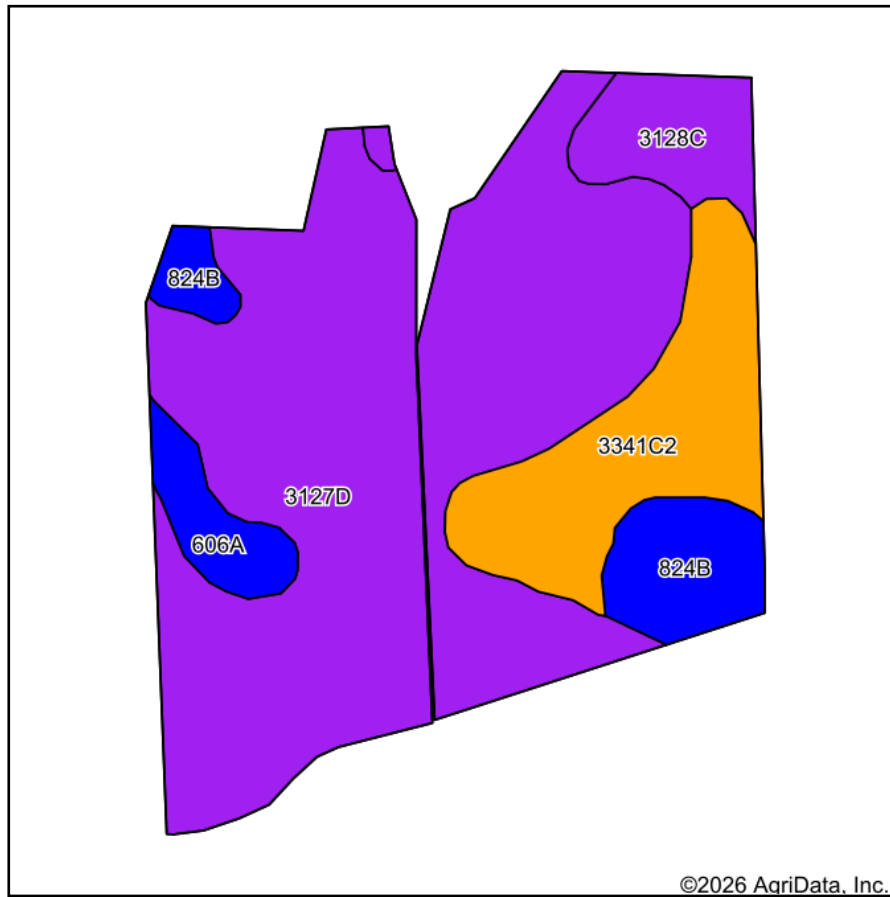


1/15/2026

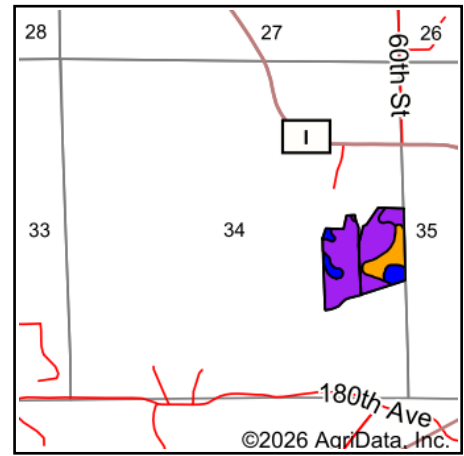
Field borders provided by Farm Service Agency as of 5/21/2008.



# Soils Map



Soils data provided by USDA and NRCS.



State: **Wisconsin**  
 County: **St. Croix**  
 Location: **34-31N-19W**  
 Township: **Somerset**  
 Acres: **34.35**  
 Date: **1/15/2026**



WHITETAIL PROPERTIES REAL ESTATE  
 HUNTING | RANCH | FARM | TIMBER

Maps Provided By:



Area Symbol: WI109, Soil Area Version: 21

Code	Soil Description	Acres	Percent of field	Non-Irr Class Legend	Non-Irr Class *c	*n NCCPI Overall	*n NCCPI Corn	*n NCCPI Soybeans
3127D	Amery-Rosholt complex, 12 to 20 percent slopes, very stony	23.08	67.1%		Vis	38	38	20
3341C2	Amery loam, 6 to 12 percent slopes, eroded	5.32	15.5%		Ille	46	46	28
824B	Jewett silt loam, 2 to 6 percent slopes	2.56	7.5%		Ile	68	68	57
3128C	Haugen-Rosholt complex, 6 to 12 percent slopes, very stony	2.13	6.2%		Vis	41	41	22
606A	Huntsville silt loam, 0 to 3 percent slopes	1.26	3.7%		Ilw	76	76	75
Weighted Average					5.09	*n 43.1	*n 43.1	*n 26.1

\*n: The aggregation method is "Weighted Average using all components"

\*c: Using Capabilities Class Dominant Condition Aggregation Method