

FSA INFO PACKET



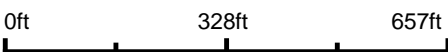
A DIVISION OF WHITETAIL
PROPERTIES REAL ESTATE, LLC

RANCHANDFARMAUCTIONS.COM

Aerial Map



Boundary Center: 40.912938, -91.926428



32-71N-9W
Jefferson County
Iowa

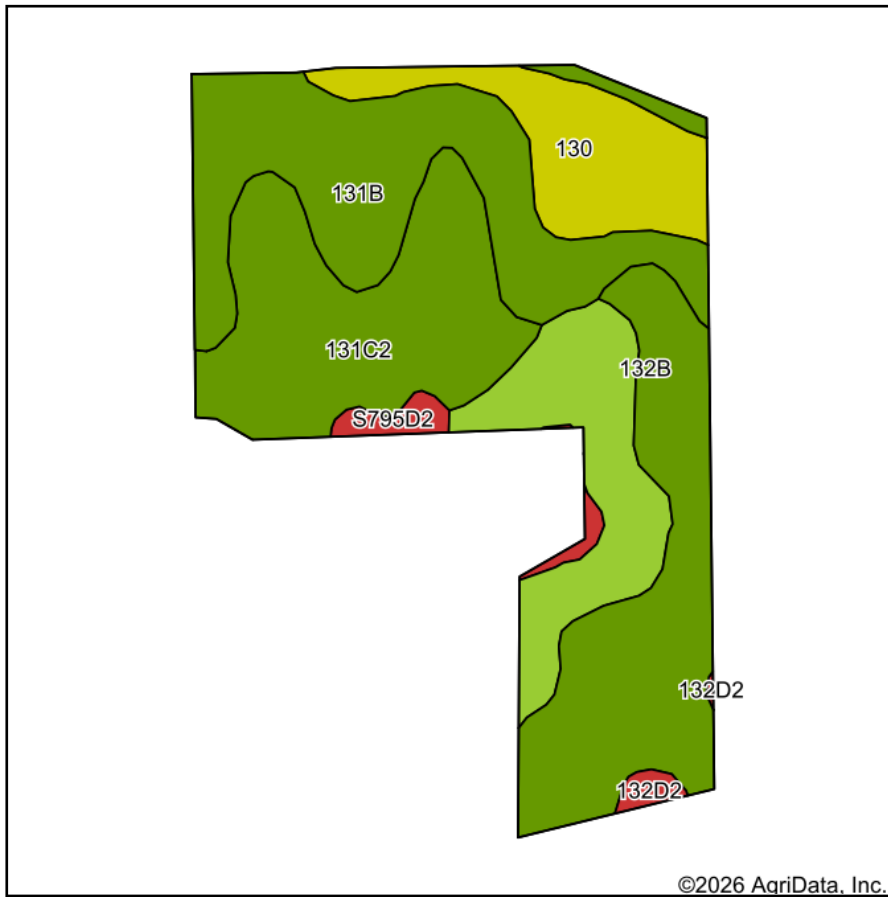


WHITETAIL PROPERTIES REAL ESTATE
HUNTING | RANCH | FARM | TIMBER

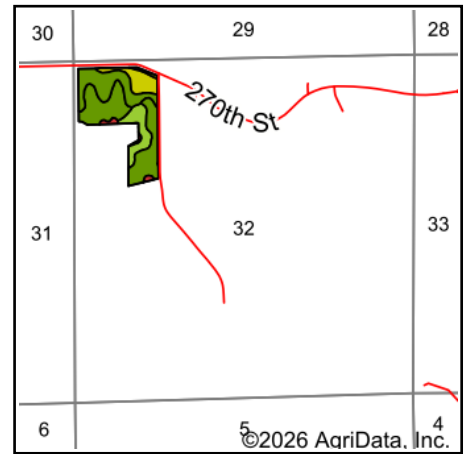
Maps Provided By:
 **surety**[®]
CUSTOMIZED ONLINE MAPPING
© AgriData, Inc. 2025 www.AgriDataInc.com

2/18/2026

Soils Map



Soils data provided by USDA and NRCS.



State: **Iowa**
 County: **Jefferson**
 Location: **32-71N-9W**
 Township: **Cedar**
 Acres: **32.45**
 Date: **2/18/2026**



WHITETAIL PROPERTIES REAL ESTATE
 HUNTING | RANCH | FARM | TIMBER

Maps Provided By:



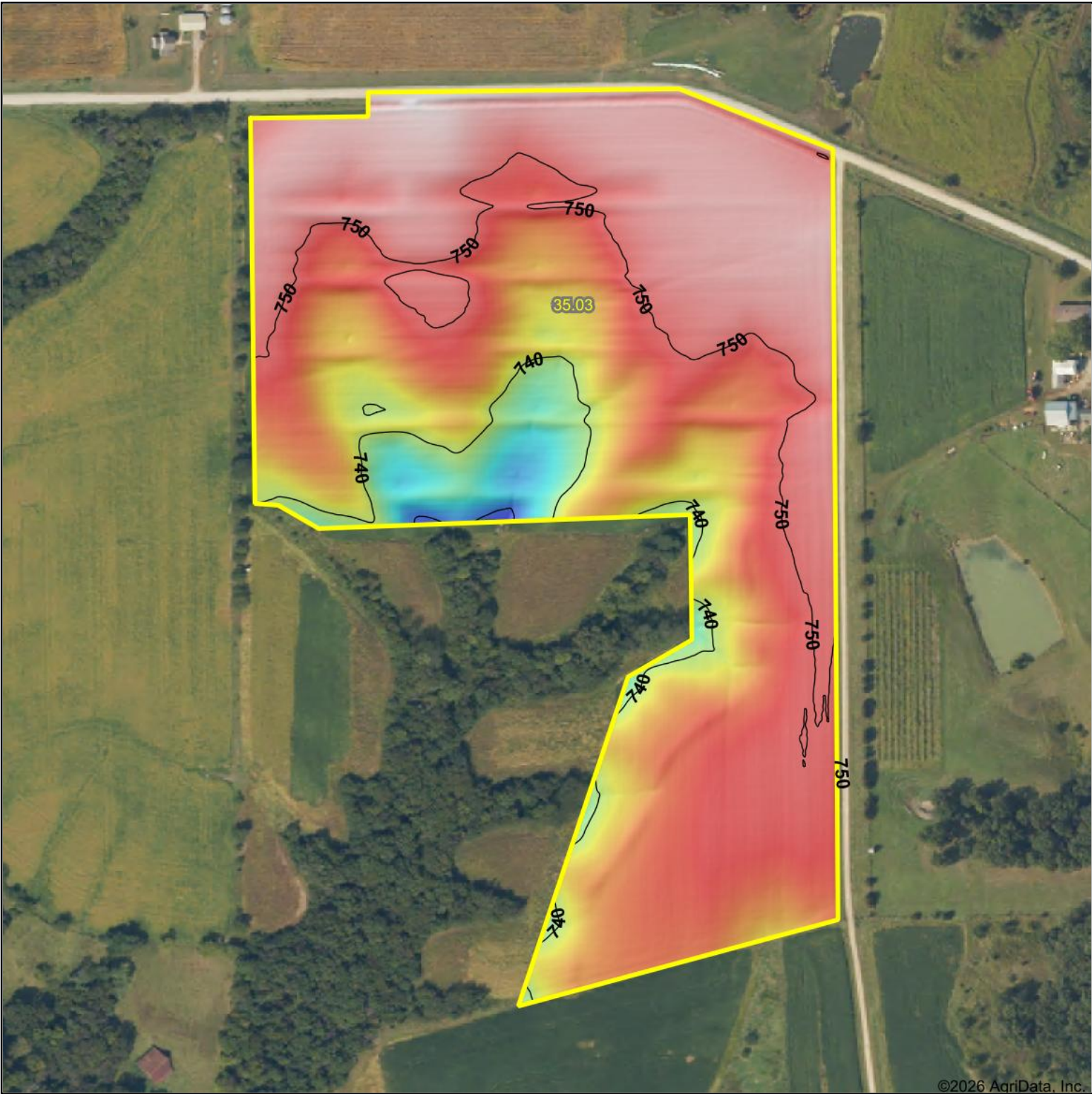
Area Symbol: IA101, Soil Area Version: 33

Code	Soil Description	Acres	Percent of field	CSR2 Legend	Non-Irr Class	CSR2**	*n NCCPI Overall	*n NCCPI Corn	*n NCCPI Small Grains	*n NCCPI Soybeans
131B	Pershing silt loam, 2 to 5 percent slopes	8.09	25.1%		IIIe	70	74	74	70	59
131C2	Pershing silty clay loam, 5 to 9 percent slopes, moderately eroded	7.54	23.2%		IIIe	62	68	68	65	56
132B	Weller silt loam, 2 to 5 percent slopes	7.54	23.2%		IIIe	67	89	89	77	80
S132C2	Weller silty clay loam, 5 to 9 percent slopes, moderately eroded	4.48	13.8%		IIIe	59	81	81	69	67
130	Belinda silt loam, 0 to 2 percent slopes	3.90	12.0%		IIIw	47	75	75	69	63
S795D2	Ashgrove silty clay loam, 9 to 14 percent slopes, moderately eroded	0.63	1.9%		IVe	7	50	50	46	39
132D2	Weller silty clay loam, 9 to 14 percent slopes, moderately eroded	0.27	0.8%		IVe	34	78	78	67	63
Weighted Average					3.03	61.6	*n 76.7	*n 76.7	*n 69.7	*n 64.4

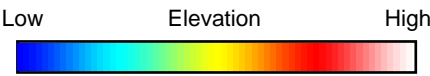
**IA has updated the CSR values for each county to CSR2.

*n: The aggregation method is "Weighted Average using all components"

Topography Hillshade



©2026 AgriData, Inc.




WHITETAIL PROPERTIES REAL ESTATE
HUNTING | RANCH | FARM | TIMBER
Maps Provided By:

 **surety**
CUSTOMIZED ONLINE MAPPING
© AgriData, Inc. 2025 www.AgriDataInc.com

Source: USGS 1 meter dem
Interval(ft): 10
Min: 728.3
Max: 755.7
Range: 27.4
Average: 747.4
Standard Deviation: 4.82 ft

0ft 330ft 661ft



32-71N-9W
Jefferson County
Iowa

Boundary Center: 40.912938, -91.926428