

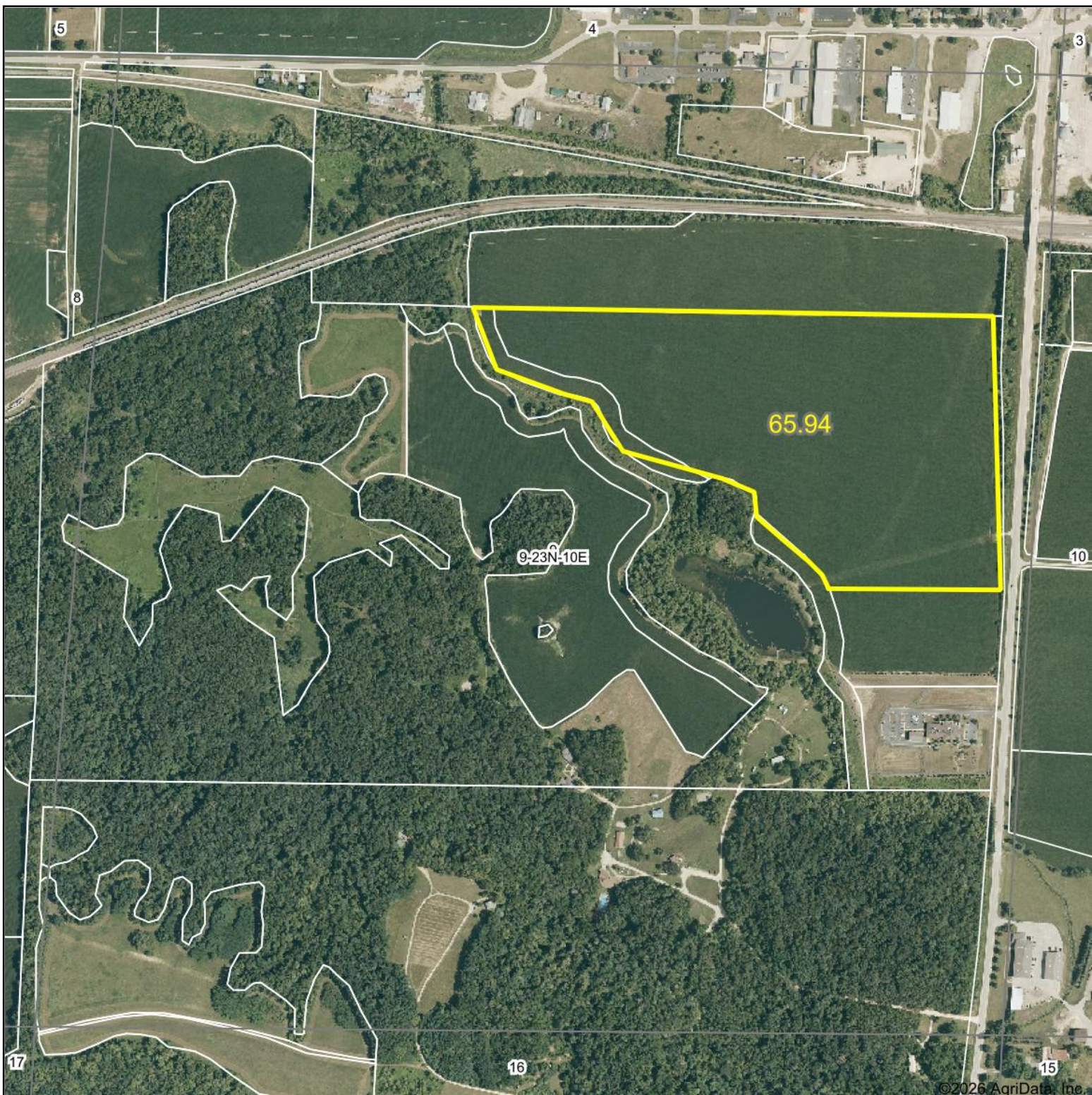
FSA INFO PACKET



A DIVISION OF WHITETAIL
PROPERTIES REAL ESTATE, LLC

RANCHANDFARMAUCTIONS.COM

Aerial Map



Boundary Center: 41° 59.88', -89° 20.586'



WHITETAIL PROPERTIES REAL ESTATE
HUNTING | RANCH | FARM | TIMBER

Maps Provided By:



© AgriData, Inc. 2025 www.AgriDataInc.com

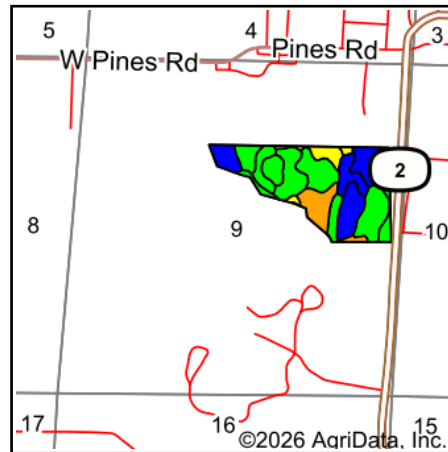
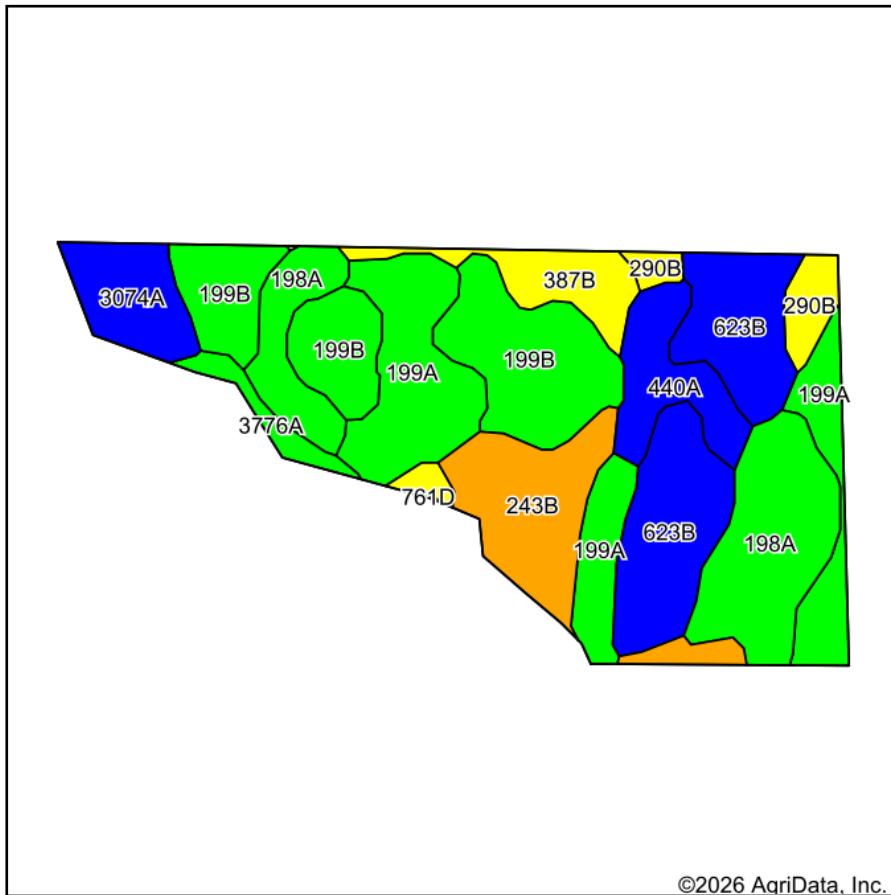
9-23N-10E
Ogle County
Illinois



3/13/2026

Field borders provided by Farm Service Agency as of 5/21/2008.

Soils Map



State: **Illinois**
 County: **Ogle**
 Location: **9-23N-10E**
 Township: **Oregon-Nashua**
 Acres: **65.94**
 Date: **3/13/2026**



WHITETAIL PROPERTIES REAL ESTATE
 HUNTING | RANCH | FARM | TIMBER

Maps Provided By:



© AgriData, Inc. 2025

www.AgriDataInc.com



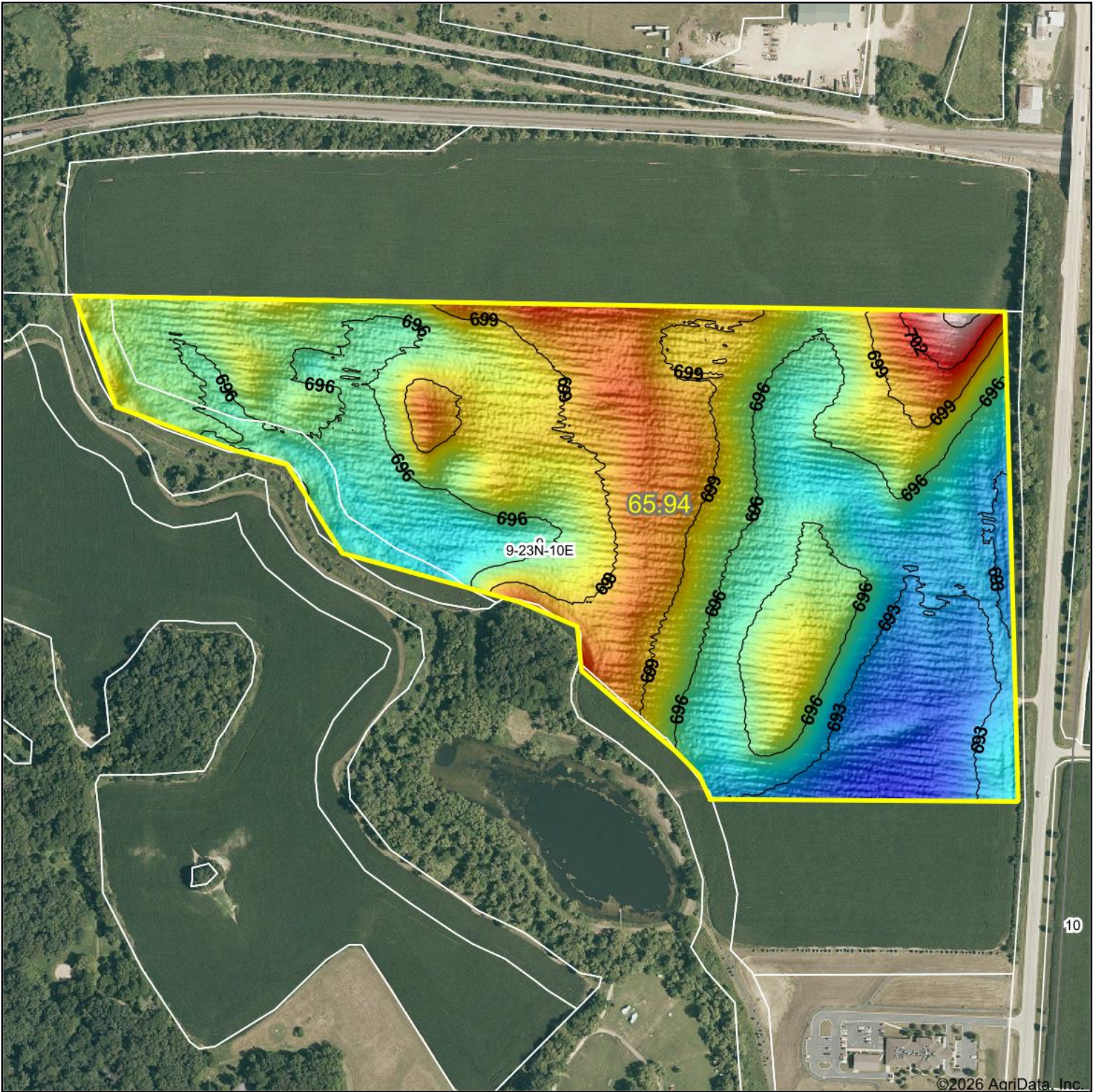
Soils data provided by USDA and NRCS.

Area Symbol: IL141, Soil Area Version: 24

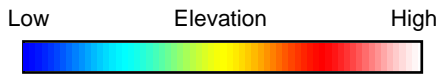
Code	Soil Description	Acres	Percent of field	Il. State Productivity Index Legend	Water Table	*Subsoil rooting a	*Corn Bu/A	*Soybeans Bu/A	*Crop productivity index for optimum management
**199B	Plano silt loam, 2 to 5 percent slopes	12.16	18.5%		> 6.5ft.	FAV	**192	**59	**141
199A	Plano silt loam, 0 to 2 percent slopes	11.99	18.2%		> 6.5ft.	FAV	194	60	142
**623B	Kishwaukee silt loam, 2 to 5 percent slopes	10.65	16.2%		> 6.5ft.	FAV	**180	**57	**134
198A	Elburn silt loam, 0 to 2 percent slopes	10.49	15.9%		1.5ft.	FAV	197	61	143
**243B	St. Charles silt loam, 2 to 5 percent slopes	6.74	10.2%		> 6.5ft.	FAV	**166	**51	**121
**440A	Jasper loam, 0 to 2 percent slopes	3.84	5.8%		> 6.5ft.	FAV	**173	**56	**129
**3074A	Radford silt loam, 0 to 2 percent slopes, frequently flooded	3.45	5.2%		1.5ft.	FAV	**186	**58	**136
**387B	Ockley silt loam, 2 to 5 percent slopes	3.04	4.6%		> 6.5ft.	FAV	**154	**49	**114
**290B	Warsaw loam, 2 to 5 percent slopes	1.90	2.9%		> 6.5ft.	FAV	**158	**51	**117
**3776A	Comfrey loam, 0 to 2 percent slopes, frequently flooded	1.20	1.8%		0.5ft.	FAV	**190	**63	**142
**570B	Martinsville silt loam, 2 to 5 percent slopes	0.48	0.7%		> 6.5ft.	FAV	**153	**49	**113
Weighted Average							184.1	57.4	135.2

Soils data provided by USDA and NRCS. Soils data provided by University of Illinois at Champaign-Urbana.

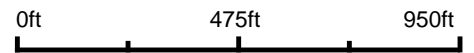
Topography Hillshade



©2026 AgriData, Inc.



Source: USGS 1 meter dem
 Interval(ft): 3
 Min: 690.5
 Max: 705.9
 Range: 15.4
 Average: 696.6
 Standard Deviation: 2.59 ft



9-23N-10E
Ogle County
Illinois

Boundary Center: 41° 59.88', -89° 20.586'


 WHITETAIL PROPERTIES REAL ESTATE
 HUNTING | RANCH | FARM | TIMBER
 Maps Provided By:

 **surety**[®]
 CUSTOMIZED ONLINE MAPPING
 © AgriData, Inc. 2025 www.AgriDataInc.com

Field borders provided by Farm Service Agency as of 5/21/2008.