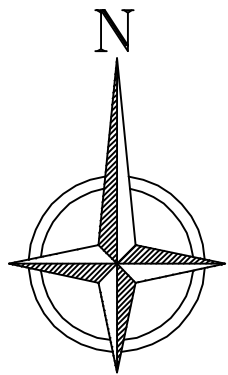


Part of the Northeast Quarter of Section 25 in Township 37 North, Range 7 East  
of the Fifth Principal Meridian in Ste. Genevieve County, Missouri.



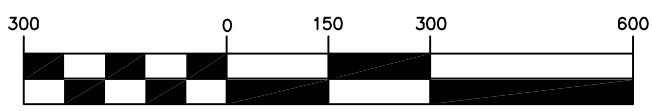
Grid North

NAD 83 (2011) MO56 MO 2401  
Grid factor: 0.999911511

LEGEND

- Found Iron Pin
- Found Drill Rod
- Stone
- Aluminum Monument
- Fence Corner Post
- ⊕ Found Stone Pile
- ⊙ Oak Tree as Corner
- △ Set Iron Pin
- Calculated Point

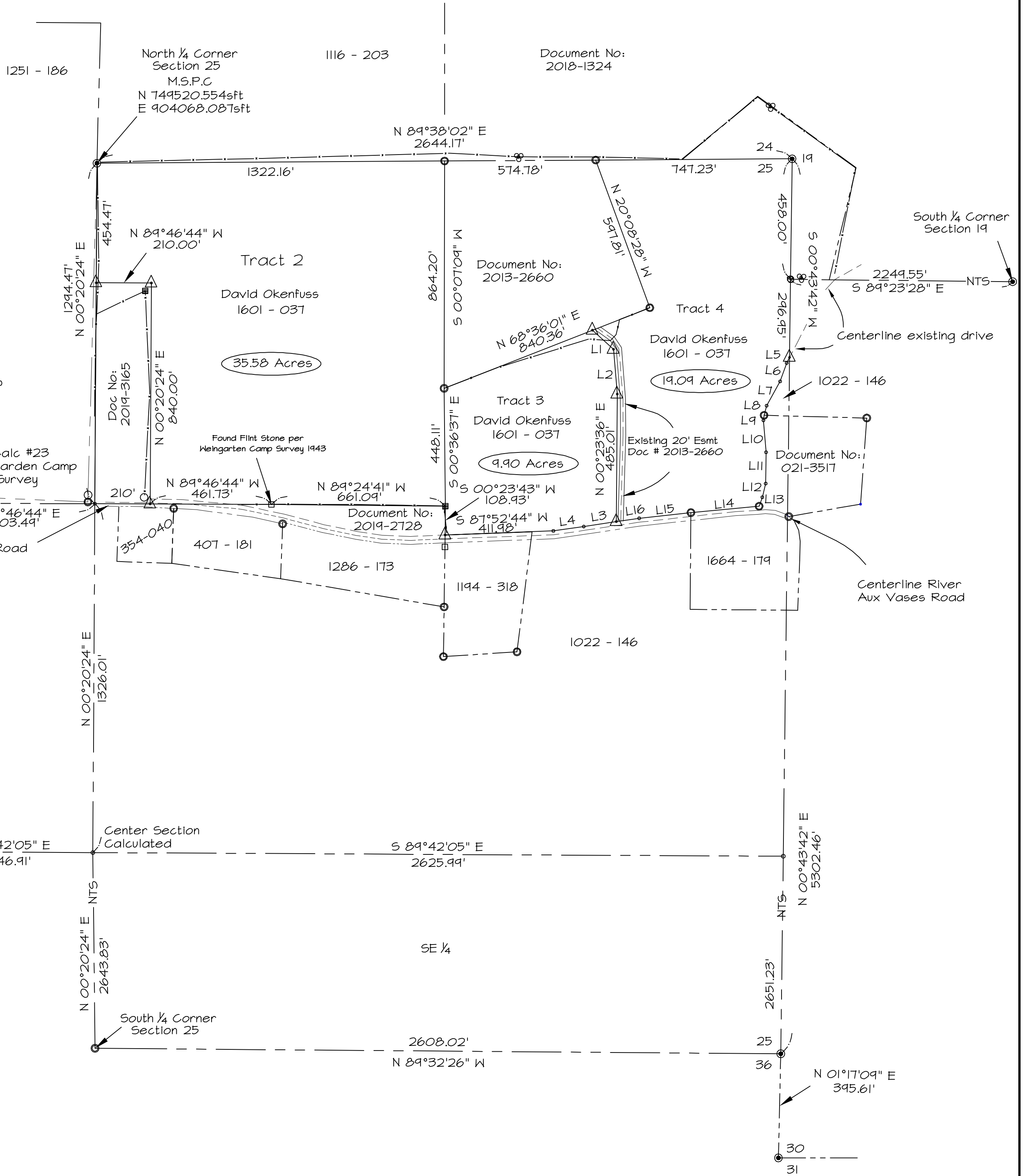
GRAPHIC SCALE



( IN FEET )  
1 inch = 300 ft.

Calc #23  
Weingarten Camp  
Survey  
N 89°46'44" W  
90.00'  
S 01°55'46" W  
49.97'  
S 89°46'44" E  
603.49'

Centerline River Aux Vases Road



LINE TABLE		
LINE	LENGTH	BEARING
L1	108.22	N47°45'27"W
L2	170.57	N04°44'52"W
L3	125.22	S81°33'09"W
L4	116.75	S81°45'01"W
L5	24.12	S27°32'54"W
L6	73.94	S19°38'51"W
L7	105.78	S29°04'05"W
L8	37.91	S14°56'30"W
L9	19.58	N07°01'54"E
L10	121.40	N04°41'43"W
L11	119.30	N00°33'17"E
L12	53.10	N14°14'17"E
L13	36.65	N19°17'40"E
L14	260.41	N84°42'20"E
L15	198.16	S83°44'51"W
L16	87.76	S81°33'09"W

PRELIMINARY  
LAYOUT

(Survey Ordered by: Jeff Heil - Whitetail Properties )

This Survey was performed in accordance with the current Missouri Standards for Rural Class Property Boundary Surveys.

Dean P. Okenfuss Missouri PL5 2021047561

Surveyor's Notes:

1. Title Policy or Title Search Not Provided
2. Utilities, Easements, Setbacks and Improvements are not shown.
3. Fences that are shown are at approximate locations.

Okenfuss Land Surveying  
(Sole Proprietor)

15207 HWY 61  
Ste. Genevieve, Missouri 63670  
Field Work by: Dean P. Okenfuss  
Drawing by: Dean P. Okenfuss  
Survey Date: March + April 2024  
Drawing Date:  
Job No: 24-13-Jeff Heil (Okenfuss)