

# FSA AND SURVEY INFO PACKET

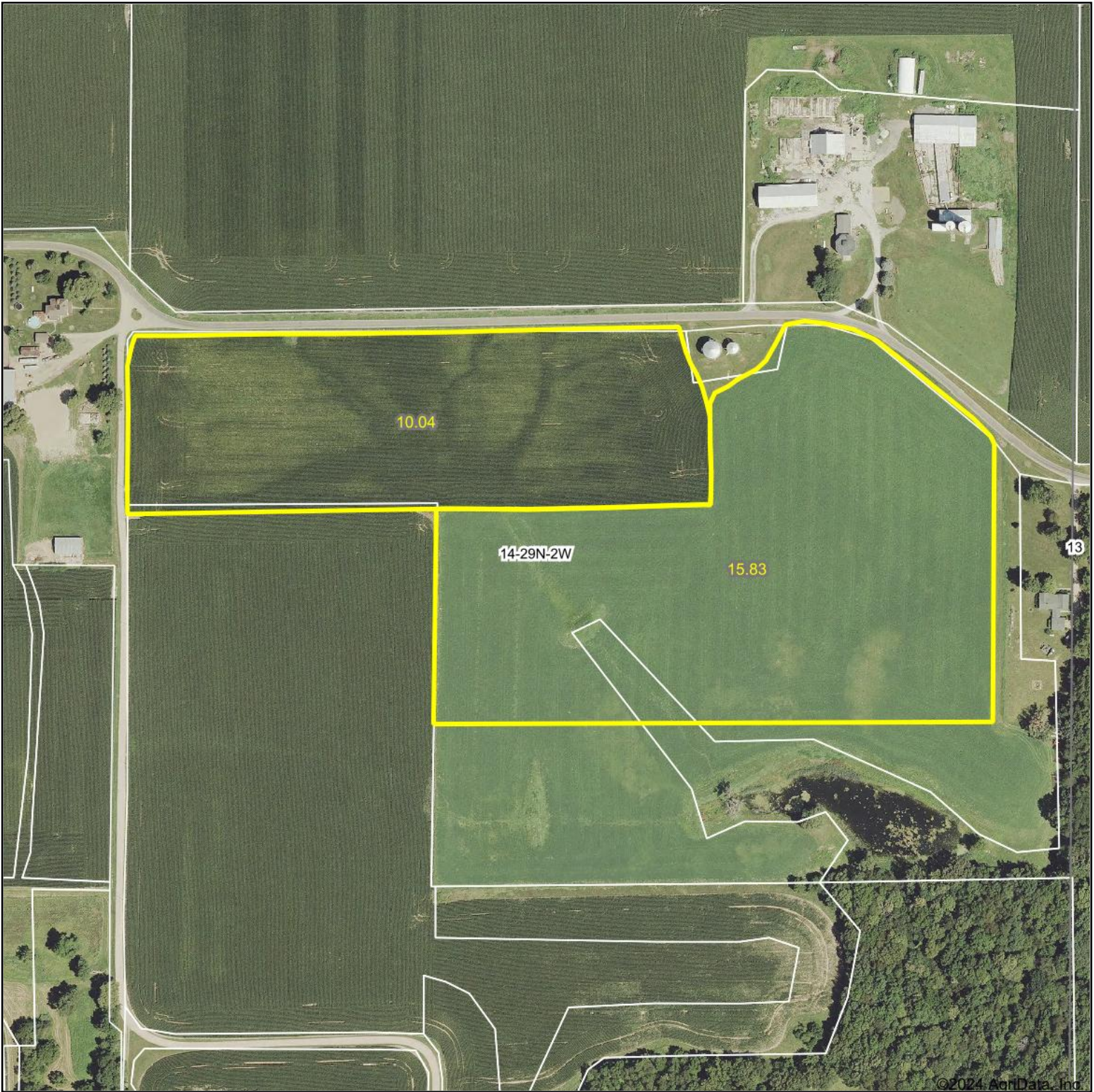


A DIVISION OF WHITETAIL  
PROPERTIES REAL ESTATE, LLC

[RANCHANDFARMAUCTIONS.COM](http://RANCHANDFARMAUCTIONS.COM)

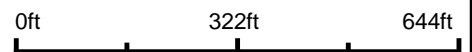


# Aerial Map



©2024 AgriData, Inc.

Boundary Center: 40.973113, -89.300123



WHITETAIL PROPERTIES REAL ESTATE  
HUNTING | RANCH | FARM | TIMBER

Maps Provided By:



© AgriData, Inc. 2023 www.AgriDataInc.com

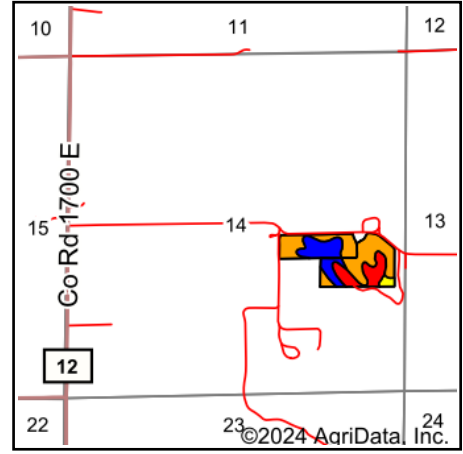
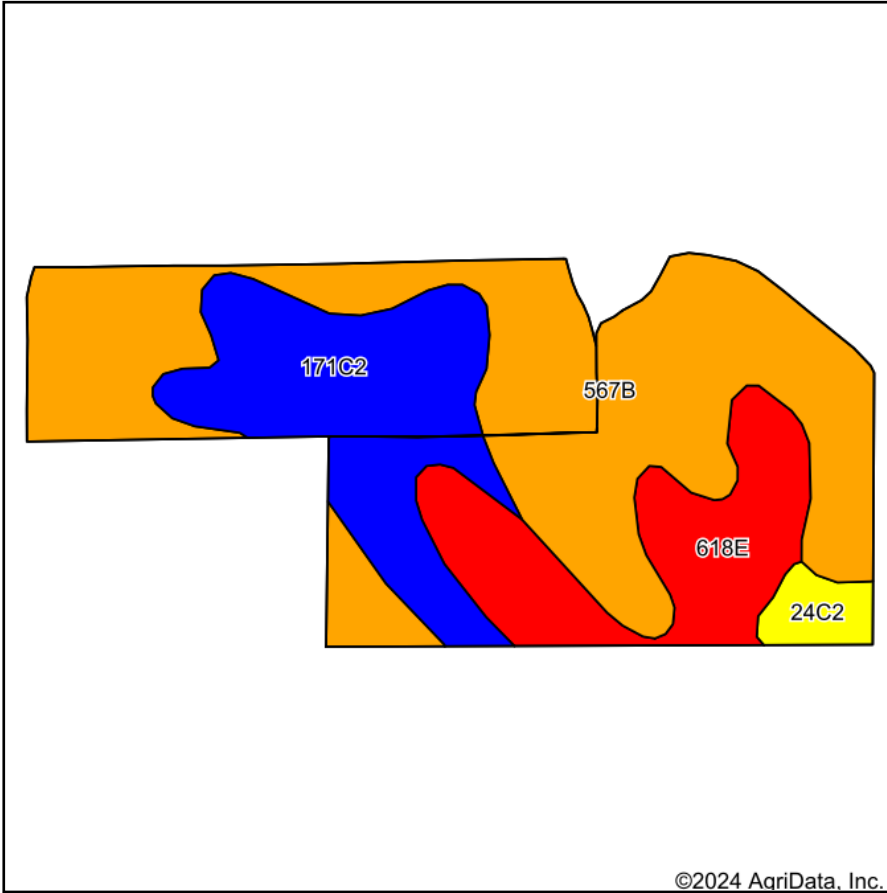
**14-29N-2W**  
**Marshall County**  
**Illinois**



10/12/2024

Field borders provided by Farm Service Agency as of 5/21/2008.

# Soils Map



State: **Illinois**  
 County: **Marshall**  
 Location: **14-29N-2W**  
 Township: **Richland**  
 Acres: **25.87**  
 Date: **10/12/2024**



WHITETAIL PROPERTIES REAL ESTATE  
 HUNTING | RANCH | FARM | TIMBER

Maps Provided By:



© AgriData, Inc. 2023

www.AgriDataInc.com



©2024 AgriData, Inc.

Soils data provided by USDA and NRCS.

Area Symbol: IL123, Soil Area Version: 17

Code	Soil Description	Acres	Percent of field	Il. State Productivity Index Legend	Corn Bu/A	Soybeans Bu/A	Crop productivity index for optimum management
**567B	Elkhart silt loam, 2 to 5 percent slopes	14.01	54.2%		**169	**53	**124
**171C2	Catlin silt loam, 5 to 10 percent slopes, eroded	6.27	24.2%		**174	**55	**128
**618E	Senachwine silt loam, 15 to 25 percent slopes	4.84	18.7%		**123	**39	**90
**24C2	Dodge silt loam, 5 to 10 percent slopes, eroded	0.75	2.9%		**155	**49	**113
<b>Weighted Average</b>					<b>161.2</b>	<b>50.7</b>	<b>118.3</b>

**Table: Optimum Crop Productivity Ratings for Illinois Soil EFOTG are sourced from Bulletin 811 calculated Map Unit Base Yield Indices, and adjusted (Adj) for slope, erosion, flooding, and surface texture.** Publication Date: 02-08-2023

Crop yields and productivity (B811 EFOTG) are maintained at the following USDA web site: 2023 Illinois Soil Productivity and Yield Indices: <https://efotg.sc.egov.usda.gov/#/state/IL/documents/section=2&folder=52809>

\*\* Base indexes from Bulletin 811 adjusted for slope, erosion, flooding, and surface texture according to the Il. Soils EFOTG



